


**Monthly Bulletin on Consumer Prices & Economy**  
**Directorate of Economics & Statistics**  
**Planning Department, Government of Maharashtra**

*Updated as on 30<sup>th</sup> April, 2010*

***About this Bulletin***

The Directorate of Economics & Statistics constantly monitors the consumer prices in the State through 142 centers (74 in urban areas & 68 in rural areas) spread throughout the State. This activity has recently been upgraded and also computerised. It is now proposed to bring out a monthly bulletin indicating not only the prices prevailing in the State but also indicate some major Economic Indicators in the State and at the National level. A brief summary of these findings is placed below.

  
Mrs. A. D. Deo,  
Add. Dir (Stat.), DES, Mumbai

***Summary***

***1. Prices***

- The Consumer Price Indices compiled separately for urban and rural areas of the State for April, 2010 (Prov.) were 165.7 and 171.0 respectively, as against 164.4 & 170.1 during March, 2010 (Prov.)
- The increase in index during April, 2010 (Prov.) was mainly due to increase in the prices of milk in both urban and rural areas.
- The average prices of the five main commodities in the State during April, 2010 (P) were
  - 1) Rice : Rs. 19.89 (Rs.18.72) in urban areas and Rs. 17.76 (Rs.16.88) in rural areas
  - 2) Wheat : Rs. 13.40 (Rs.11.25) in urban areas and Rs. 10.52 (Rs. 9.62) in rural areas
  - 3) Tur Dal : Rs. 69.06 (Rs.52.79) in urban areas and Rs. 68.86 (Rs.52.19) in rural areas
  - 4) Sugar : Rs. 34.25 (Rs.23.68) in urban areas and Rs. 33.98 (Rs.23.83) in rural areas
  - 5) Groundnut Oil : Rs. 72.97 (Rs.69.14) in urban areas and Rs. 75.48 (Rs.71.19) in rural areas.

*Note : Figures in brackets are prices for the corresponding period of the previous year.*

- The inflation rate based on CPI, prevailing in the State during April, 2010 (over corresponding month of the previous year) was 15.0 per cent in Urban areas and 14.5 per cent in Rural areas.
- The inflation rate based on All India Wholesale Price Index (WPI) was 9.9 per cent during March, 2010. This rate was 14.1 per cent for Primary Articles.
- The All-India CPI for Industrial Workers, CPI (IW) increased by 14.9 per cent during March, 2010 over the corresponding period of the previous year.

***2. Economic Indicators***

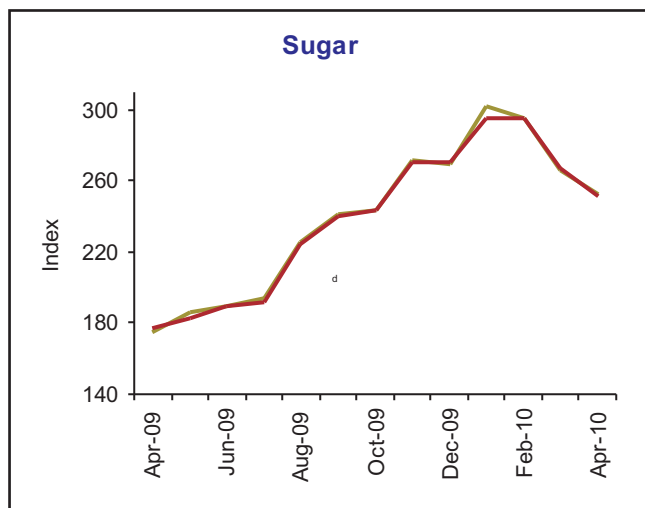
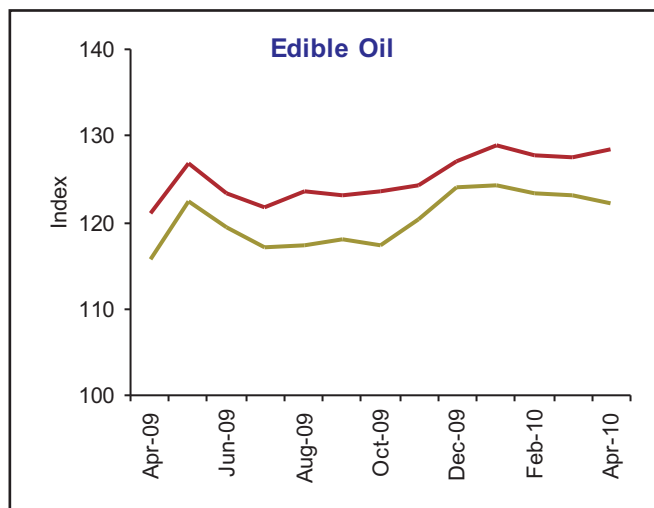
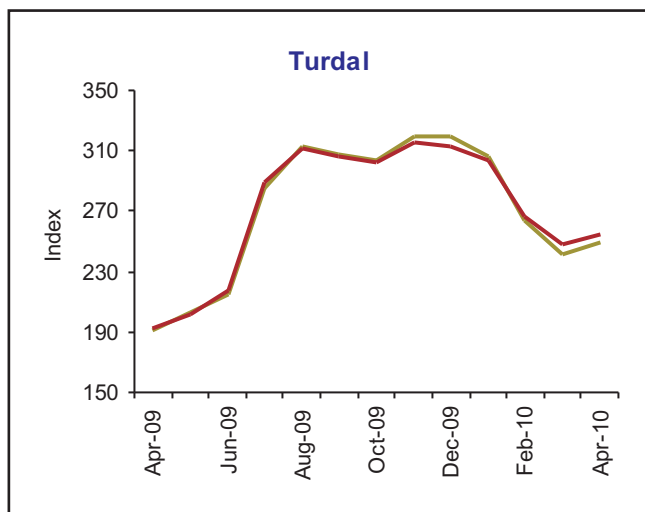
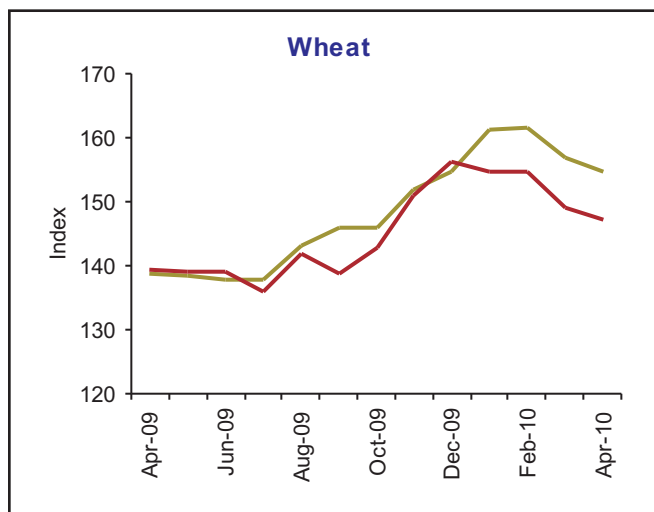
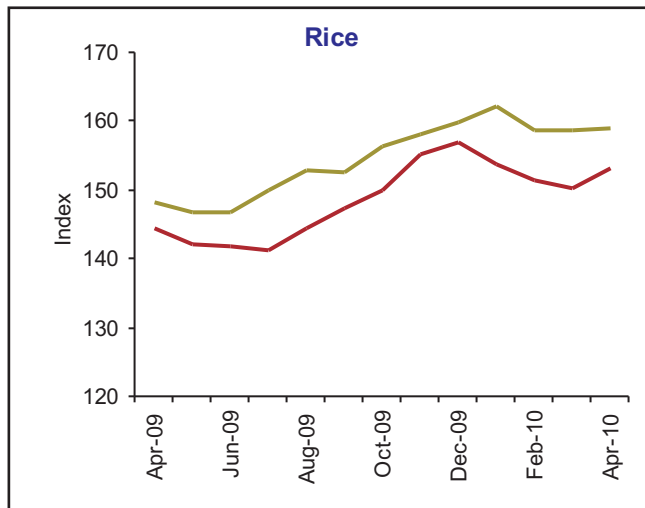
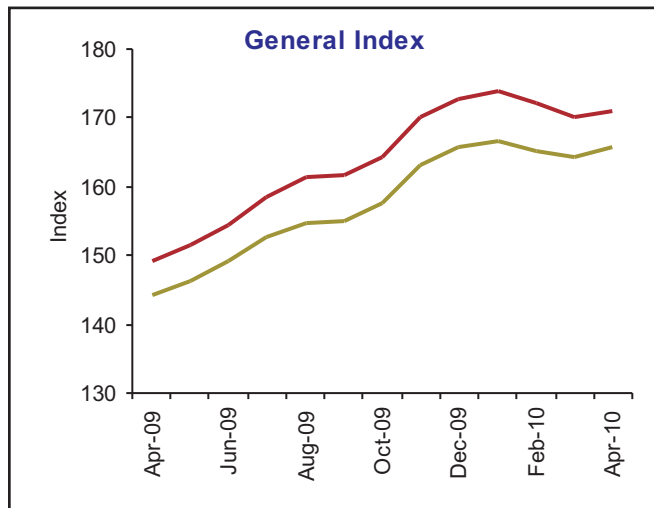
- As per the advance estimates, the State economy is expected to grow by 8.6 per cent during 2009-10. The sectoral growth rates of GSDP are expected to be 1.8 per cent for Agriculture & allied activities, 7.0 per cent for Industry and 10.4 per cent for Service sectors.
- All India Index of Industrial Production (IIP) during February, 2010 was 318.5, more by 15.1 per cent over the corresponding period of the previous year. During this period the Index of Manufacturing sector increased by 16.0 per cent.
- The broad money supply (M3) in the economy as on April 09, 2010 was more by 15.5 per cent than that was prevailing on the corresponding day of the previous year.
- Sensex of Bombay Stock Exchange as on April 29, 2010 was 17,503 more by 53.5 per cent than that was prevailing on the corresponding day of the previous year.

# CONSUMER PRICE INDICES IN RURAL & URBAN AREAS OF MAHARASHTRA

MONTH: APRIL, 2010 (P)



BASE YEAR 2003=100



# CONSUMER PRICE INDICES IN URBAN & RURAL AREAS OF MAHARASHTRA

MONTH: APRIL, 2010 (P)

BASE YEAR 2003=100

## Urban Index

Groups	Weight	April 2009	March 2010 (P)	April 2010 (P)	% Change over the Previous Year
General Index	100.00	144.14	164.44	165.74	15.0
Food	45.80	145.68	169.54	171.23	17.5
Pan, Supari & Tobacco	1.54	139.64	156.93	158.56	13.5
Fuel, Power & Light	10.28	223.35	277.94	277.98	24.5
Clothing, Bedding & Footwear	7.51	110.66	115.08	115.47	4.3
Miscellaneous	34.87	126.18	135.26	136.61	8.3

## Rural Index

Groups	Weight	April, 2009	March, 2010 (P)	April, 2010 (P)	% Change over the Previous Year
General Index	100.00	149.31	170.10	171.00	14.5
Food	52.85	146.54	169.57	170.54	16.4
Pan, Supari & Tobacco	2.15	148.27	163.10	163.97	10.6
Fuel, Power & Light	10.67	237.12	290.98	292.12	23.2
Clothing, Bedding & Footwear	8.53	110.08	111.66	112.06	1.8
Miscellaneous	25.80	131.75	141.11	141.96	7.7

# MONTHLY BULLETIN ON STATE ECONOMY

updated as on 30<sup>th</sup> April, 2010

Important Economic Indicators of the State	Unit of description	Period of data	Observations Latest data	Data for corresponding period of the previous year	Percentage change from previous to latest period
<b>STATE ECONOMY</b>					
<b>Gross State Domestic Product at current prices</b>	<b>Rs.Crore</b>	<b>2009-10</b>	<b>831,971</b>	<b>692,749</b>	<b>20.1</b>
Agriculture & allied activities	Rs.Crore	2009-10	84,339	74,660	13.0
Industries	Rs.Crore	2009-10	256,104	214,854	19.2
Services	Rs.Crore	2009-10	491,528	403,235	21.9
<b>Gross State Domestic Product at constant (1999-2000) prices</b>	<b>Rs.Crore</b>	<b>2009-10</b>	<b>480,335</b>	<b>442,320</b>	<b>8.6</b>
Agriculture & allied activities	Rs.Crore	2009-10	45,170	44,362	1.8
Industries	Rs.Crore	2009-10	135,210	126,331	7.0
Services	Rs.Crore	2009-10	299,955	271,627	10.4
<b>All India Index of Industrial Production (Base 1993-94=100)</b>					
General		Feb. 2010	318.5	276.8	15.1
Mining		Feb. 2010	205.5	183.2	12.2
Manufacturing		Feb. 2010	345.1	297.4	16.0
<b>All India Wholesale Price Index (WPI) (Base 1993-94=100)</b>					
All Commodities		March. 2010	250.8	228.2	9.9
Primary Articles		March. 2010	283.2	248.2	14.1
Fuel, Power, Lights & Lubricants		March. 2010	361.8	321.0	12.7
Manufactured Products		March. 2010	214.9	200.6	7.1
<b>All India Consumer Price Indices (CPI)</b>					
CPI -Industrial Workers (CPI [IW])	2001=100	March. 2010	170.0	148.0	14.9
CPI-Rural Labourers (CPI [RL])	1986-87=100	March. 2010	536.0	464.0	15.5
CPI-Urban Non-Manual Employees (CPI [UNME]) ##	1984-85=100	Feb. 2010	666.0	575.0	15.8
<b>FINANCIAL INDICATORS OF THE STATE GOVERNMENT</b>					
<b>Revenue Receipts</b>	<b>Rs.Crore</b>	<b>April-09-Feb. 2010</b>	<b>71,280</b>	<b>65,755</b>	<b>8.4</b>
a) Tax Revenue	Rs.Crore	April-09-Feb. 2010	56,845	53,356	6.5
b) Non-Tax Revenue	Rs.Crore	April-09-Feb. 2010	14,435	12,399	16.4
<b>Revenue Expenditure</b>	<b>Rs.Crore</b>	<b>April-09-Feb. 2010</b>	<b>69,133</b>	<b>55,163</b>	<b>25.3</b>
a) Plan Expenditure	Rs.Crore	April-09-Feb. 2010	8,293	7,038	17.8
b) Non-Plan Expenditure	Rs.Crore	April-09-Feb. 2010	60,840	48,125	26.4
<b>BANKING</b>					
Broad Money (M <sub>3</sub> )	Rs.Crore	April/09/2010	5,640,054	4,881,125	15.5
Bank Rate	percent per annum	April/16/2010	6.00	6.00	
Treasury Bill Rates	percent per annum	April/21/2010	4.17	3.36	
Aggregate Bank Deposits in the State	Rs.Crore	As on 31/12/2009	1,073,163	872,671	23.0
Gross Credits Disbursed in the State	Rs.Crore	As on 31/12/2009	886,753	862,936	2.8
<b>CAPITAL MARKET</b>					
Bombay Stock Exchange (Sensex)	1978-79= 100	April/29/2010	17,503.00	11,403.00	53.5
National Stock Exchange (Nifty)	Nov 3,1995 =1000	April/29/2010	5,254.00	3,474.00	51.2
<b>EXCHANGE RATES</b>					
Rupees per US Dollar	-	April/23/2010	44.5400	50.2050	12.7
Rupees per Euro	-	April/23/2010	58.9063	65.4363	11.1
<b>ENERGY</b>					
Generation of Electricity	million units	April 09 - March 2010	51,052	50,398	1.3
Consumption of Electricity (Metered Sale)	million units	April 09 - Feb 2010	49,440	45,058	9.7
Peak Demand	MW	As on 20th March 2010	19,120	--	

Note : The data for the current period is purely preliminary or provisional

The figures for generation and consumption of electricity are only for State owned companies

## Linked All India CPI-UNME on base 1984-85 for February, 2010

This Bulletin is also available on <http://mahades.maharashtra.gov.in>