

Monthly Bulletin on Consumer Prices & Economy

Directorate of Economics & Statistics

Planning Department, Government of Maharashtra

Updated as on 15th January, 2011

About this Bulletin

The Directorate of Economics & Statistics constantly monitors the consumer prices in the State through 142 centers (74 in urban areas & 68 in rural areas) spread throughout the State. A bulletin indicating the prices prevailing in the State and some major economic indicators of the State and also at the National Level is published in this bulletin on a monthly basis. A summary of these findings is placed below.

Summary

1. Prices

- The Consumer Price Indices compiled separately for urban and rural areas of the State for December, 2010 were 181.94 (P) and 189.64 (P) respectively, as against 176.44 & 182.83 during November, 2010 .
- The inflation rate for food group during December, 2010 was 12.6 per cent and 11.2 per cent in urban and rural areas respectively.
- The increase in index during the month was mainly due to increase in the prices of Vegetables, specially potato, onion, garlic and sugar in food group and electricity charges in Fuel, power and light group in both urban and rural areas.
- The inflation rate based on All-India Wholesale Price Index (WPI) was 8.4 per cent (P) during December, 2010. This rate was 16.5 per cent (P) for Primary Articles.
- The All-India CPI for Industrial Workers, CPI (IW) increased by 8.3 per cent during November, 2010 over the corresponding period of the previous year.

2. Economic Indicators

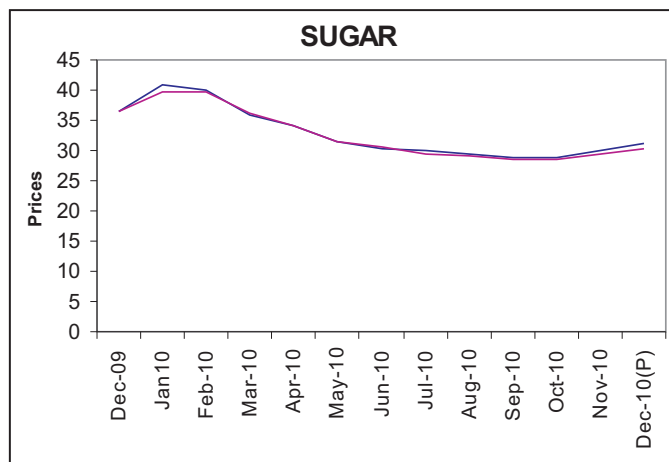
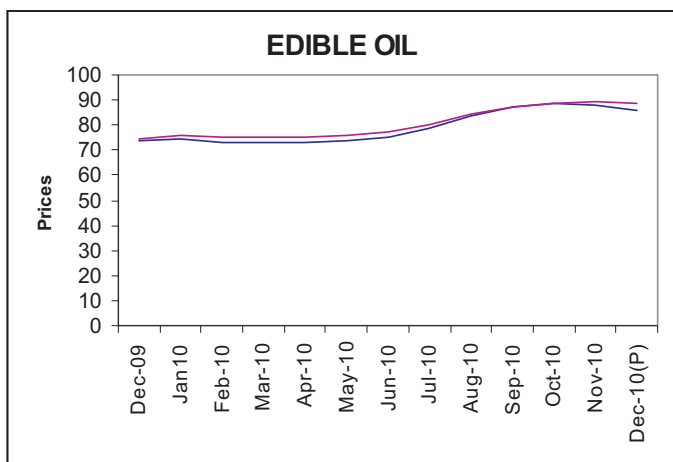
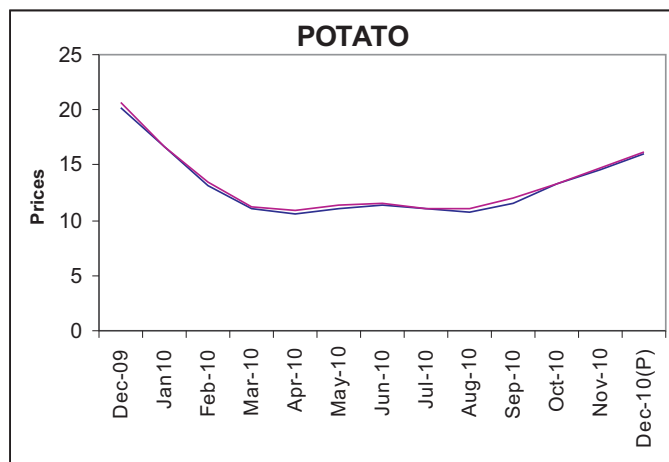
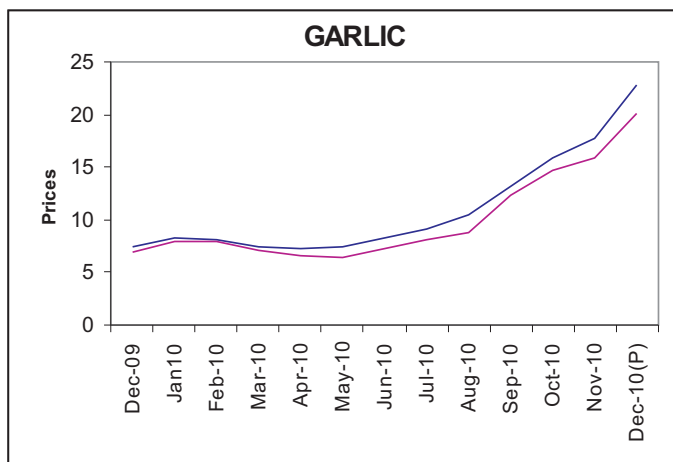
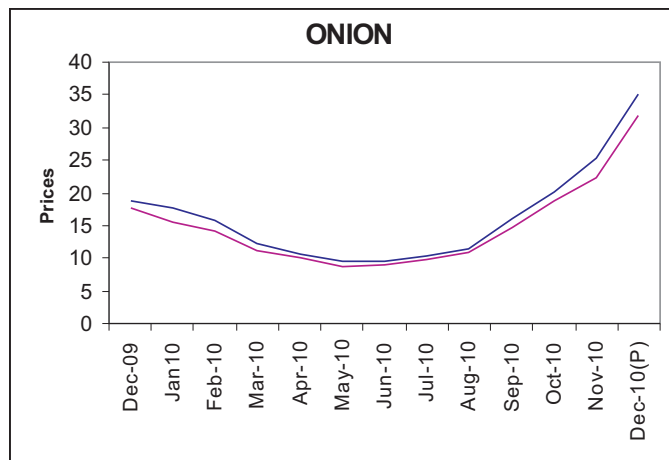
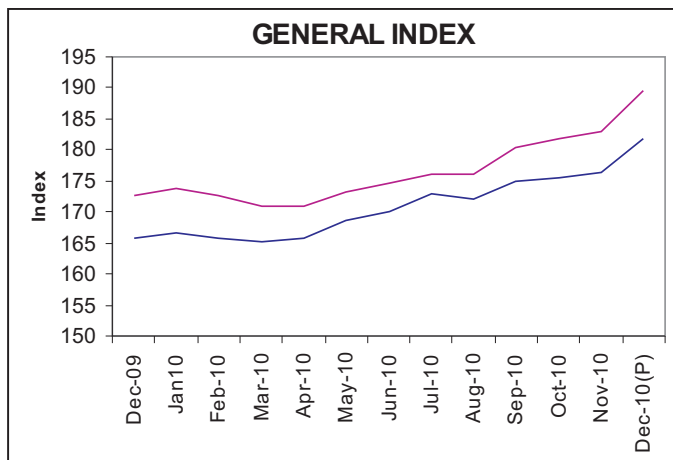
- All India Index of Industrial Production (IIP) during November, 2010 was 317.9, more by 2.7 per cent while the Index of Manufacturing sector was 343.9 more by 2.3 per cent over the corresponding period of the previous year.
- The broad money supply (M_3) in the economy as on December, 31, 2010 was more by 16.5 per cent than that was prevailing on the corresponding day of the previous year.
- The revenue receipts of the State Government during 2010-11 upto November, 2010 were ₹60,809 crore, of which tax revenue was ₹52,218 crore .
- The revenue expenditure of the State Government during 2010-11 upto November, 2010 was ₹56,094 crore of which, plan expenditure was ₹5,046 crore.
- As on January 13, 2011 Sensex of Bombay Stock Exchange was 19,183 and Nifty of National Stock Exchange was 5,752.

CONSUMER PRICE INDICES IN RURAL & URBAN AREAS OF MAHARASHTRA AND PRICES OF IMPORTANT COMMODITIES

MONTH: DECEMBER, 2010 (P)



BASE YEAR 2003=100



CONSUMER PRICE INDICES IN URBAN & RURAL AREAS OF MAHARASHTRA

MONTH: DECEMBER, 2010 (P)

BASE YEAR 2003=100

Urban Index

Groups	Weight	December, 2009	November, 2010	December, 2010 (P)	% Change over the Previous Year
General Index	100.0	165.90	176.44	181.94	9.7
Food	45.80	175.27	188.60	197.29	12.6
Pan, Supari & Tobacco	1.54	150.14	170.33	170.86	13.8
Fuel, Power & Light	10.28	277.64	272.77	283.76	2.2
Clothing, Bedding & Footwear	7.51	112.95	119.18	119.65	5.9
Miscellaneous	34.87	132.76	144.68	145.69	9.7

Rural Index

Groups	Weight	December, 2009	November, 2010	December, 2010 (P)	% Change over the Previous Year
General Index	100.0	172.75	182.83	189.64	9.8
Food	52.85	177.12	186.77	196.96	11.2
Pan, Supari & Tobacco	2.15	158.20	175.21	176.31	11.4
Fuel, Power & Light	10.67	287.36	294.98	304.55	6.0
Clothing, Bedding & Footwear	8.53	111.43	113.76	113.54	1.9
Miscellaneous	25.8	137.91	151.86	153.43	11.3

MONTHLY BULLETIN ON STATE ECONOMY

updated as on 15th January, 2011

Important Economic Indicators of the State	Unit of description	Period of data	Observations Latest data	Data for corresponding period of the previous year	Percentage change from previous to latest period
STATE ECONOMY					
Gross State Domestic Product at current prices	₹ Crore	2009-10	831,971	692,749	20.1
Agriculture & Allied Activities	₹ Crore	2009-10	84,339	74,660	13.0
Industries	₹ Crore	2009-10	256,104	214,854	19.2
Services	₹ Crore	2009-10	491,528	403,235	21.9
Gross State Domestic Product at constant (1999-2000) prices	₹ Crore	2009-10	480,335	442,320	8.6
Agriculture & Allied Activities	₹ Crore	2009-10	45,170	44,362	1.8
Industries	₹ Crore	2009-10	135,210	126,331	7.0
Services	₹ Crore	2009-10	299,955	271,627	10.4
All-India Index of Industrial Production (Base 1993-94 =100)					
General		November, 2010	317.9	309.5	2.7
Mining		November, 2010	205.8	194.2	6.0
Manufacturing		November, 2010	343.9	336.1	2.3
All-India Wholesale Price Index (WPI) (Base 2004-05=100)					
All Commodities		December, 2010	144.1	132.9	8.4
Primary Articles		December, 2010	188.9	162.2	16.5
Fuel & Power		December, 2010	150.1	135.0	11.2
Manufactured Products		December, 2010	128.9	123.4	4.5
All-India Consumer Price Indices (CPI)					
CPI -Industrial Workers (CPI [IW])	2001=100	November, 2010	182.0	168.0	8.3
CPI-Rural Labourers (CPI [RL])	1986-87=100	November, 2010	569.0	532.0	7.0
CPI-Urban Non-Manual Employees (CPI [UNME]) #	1984-85=100	October, 2010	705.0	643.0	9.6
FINANCIAL INDICATORS OF THE STATE GOVERNMENT					
Revenue Receipts	₹ Crore	April -November 2010	60,809	49,887	21.9
a) Tax Revenue	₹ Crore	April -November 2010	52,218	39,864	31.0
b) Non-Tax Revenue	₹ Crore	April -November 2010	8,591	10,023	-14.3
Revenue Expenditure	₹ Crore	April -November 2010	56,094	48,541	15.6
a) Plan Expenditure	₹ Crore	April -November 2010	5,046	5,065	-0.4
b) Non-Plan Expenditure	₹ Crore	April -November 2010	51,048	43,476	17.4
BANKING					
Broad Money (M ₃)	₹ Crore	Dec./31/2010	6,202,428	5,323,070	16.5
Bank Rate	₹ Crore	Dec./31/2010	6.00	6.00	
Treasury Bill Rates	₹ Crore	Jan./5/2011	7.10	3.68	
Aggregate Bank Deposits in the State	₹ Crore	As on 30/06/2010	1,167,504	1,020,065	14.5
Gross Credits Disbursed in the State	₹ Crore	As on 30/06/2010	993,112	870,328	14.1
CAPITAL MARKET					
Bombay Stock Exchange (Sensex)	1978-79= 100	Jan./13/2011	19183.00	17510.00	9.6
National Stock Exchange (Nifty)	Nov 3,1995 =1000	Jan./13/2011	5752.00	5234.00	9.9
EXCHANGE RATES					
Rupees per US Dollar	-	Jan./7/2011	45.3750	45.8700	1.1
Rupees per Euro	-	Jan./7/2011	58.9375	65.9537	11.9
ENERGY					
Generation of Electricity	million units	April - December 2010	33,430	37,694	-11.3
Consumption of Electricity (Metered Sale)	million units	April - November 2010	39,901	35,834	11.3
Peak Demand	MW	As on 29/12/2010	18,901	--	

Note : The data for the current period is purely preliminary or provisional

The figures for generation & consumption of electricity are only for State owned companies

Linked All India CPI-UNME on base 1984-85 for October, 2010

This Bulletin is also available on <http://mahades.maharashtra.gov.in>