

Monthly Bulletin on Consumer Prices & Economy
Directorate of Economics & Statistics
Planning Department, Government of Maharashtra

Updated as on 31st October, 2011

About this Bulletin

The Directorate of Economics & Statistics constantly monitors the consumer prices in the State through 142 centers (74 in urban areas & 68 in rural areas) spread throughout the State. A bulletin indicating the prices prevailing in the State and some major economic indicators of the State and also at the National Level is published in this bulletin on a monthly basis. A summary of these findings is placed below.

*Mrs. A. D. Deo,
Add. Dir (Stat.), DES, Mumbai*

Summary

1. Prices

- The Consumer Price Indices compiled separately for urban & rural areas of the State for October, 2011 were 191.4 (P) and 200.6 (P) respectively, as against 189.5 & 198.4 during September, 2011.
- The inflation based on CPI during the month was 8.9 per cent and 10.3 per cent in urban and rural areas respectively.
- The increase in General index during the month was mainly due to increase in the prices of milk, groundnut oil, chana dal and vegetables in Food group in both urban and rural areas and also increase in the prices of petrol in miscellaneous group in urban area .
- The All-India CPI for urban and rural areas (with base 2010) for September, 2011 increased by 11.1 per cent and 14.6 per cent respectively.
- During October, 2011, the inflation rate based on All-India Wholesale Price Index (WPI) was 9.7 per cent (P). The food inflation during the month was 11.1 per cent.
- During September, 2011 the All-India CPI for Industrial Workers, CPI (IW) increased by 10.1 per cent over the corresponding period of the previous year.

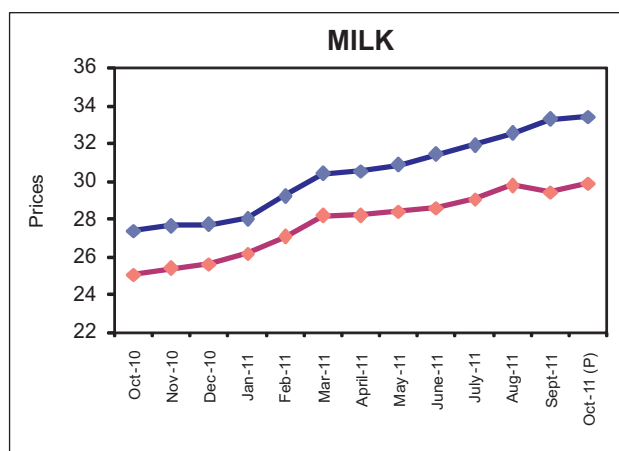
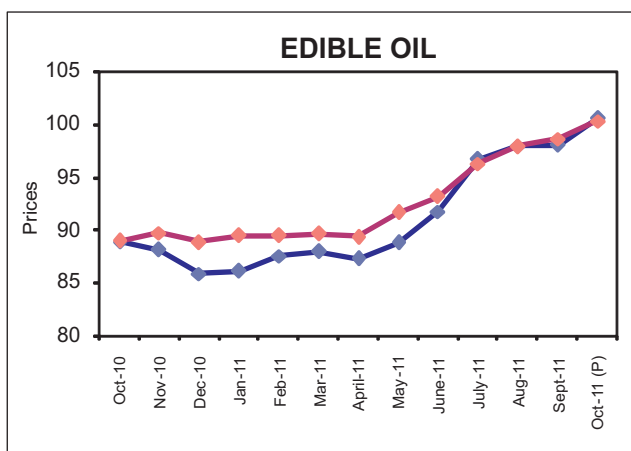
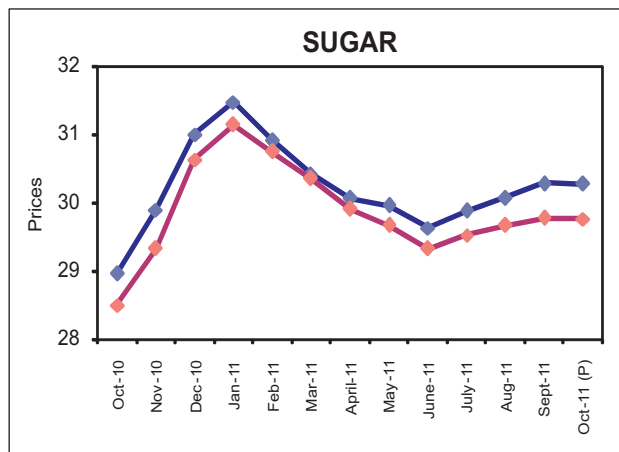
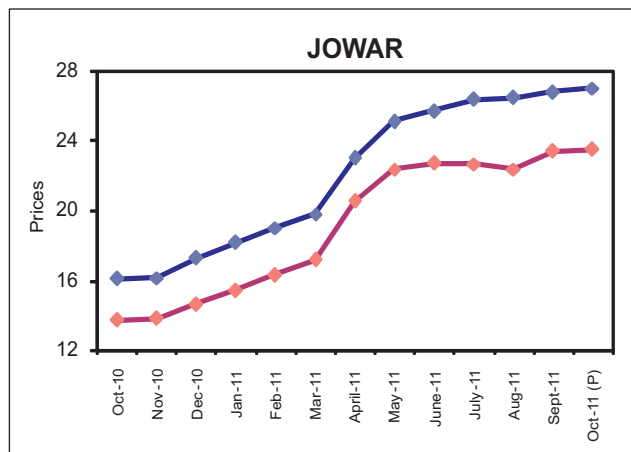
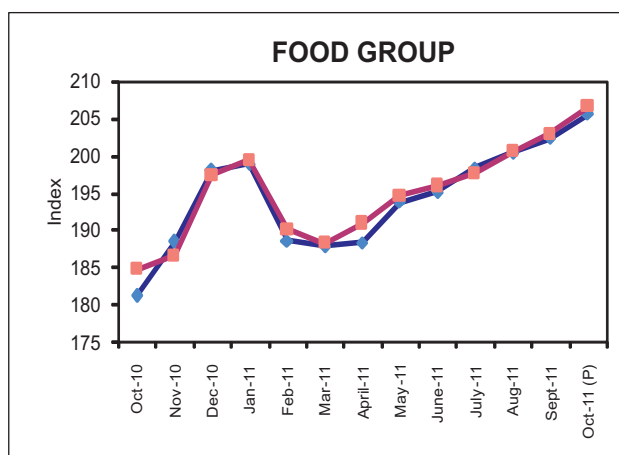
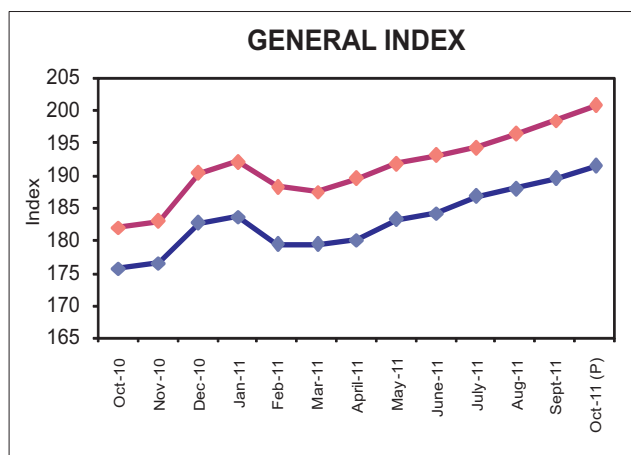
2. Economic Indicators

- All India Index of Industrial Production (IIP) during September, 2011 was 163.2 more by 1.9 per cent while the Index of Manufacturing sector was 175.7 more by 2.1 per cent over the corresponding period of the previous year.
- The broad money supply (M₃) in the economy as on 21st October, 2011 was more by 14.4 per cent than that was prevailing on the corresponding day of the previous year.
- The revenue receipts of the State Government during 2011-12 upto September were ₹ 51,830 crore, of which, tax revenue was ₹ 43,877 crore .
- During the same period, revenue expenditure of the State Government was ₹ 50,976 crore, of which, plan expenditure was ₹ 4,830 crore.
- As on October 25, 2011 Sensex of Bombay Stock Exchange was 17,255 and Nifty of National Stock Exchange was 5,192 less by 15.0 per cent respectively as compared to the corresponding day of the previous year.

CONSUMER PRICE INDICES IN RURAL & URBAN AREAS OF MAHARASHTRA AND STATE AVERAGE PRICES OF IMPORTANT COMMODITIES

MONTH: OCTOBER, 2011 (P)

BASE YEAR 2003=100



CONSUMER PRICE INDICES IN URBAN & RURAL AREAS OF MAHARASHTRA

MONTH : OCTOBER, 2011 (P)

BASE YEAR 2003=100

Urban Index

Groups	Weight	Oct., 2010	Sept., 2011	Oct., 2011 (P)	% Change over the Previous Year
General Index	100.0	175.65	189.46	191.36	8.9
Food	45.80	185.31	202.41	205.68	11.0
Pan, Supari & Tobacco	1.54	169.67	203.98	207.82	22.5
Fuel, Power & Light	10.28	282.19	292.98	293.31	3.9
Clothing, Bedding & Footwear	7.51	118.38	126.65	127.17	7.4
Miscellaneous	34.87	144.16	154.82	155.62	7.9

Rural Index

Groups	Weight	Oct., 2010	Sept., 2011	Oct., 2011 (P)	% Change over the Previous Year
General Index	100.0	181.94	198.37	200.63	10.3
Food	52.85	184.86	203.05	206.69	11.8
Pan, Supari & Tobacco	2.15	173.90	201.20	205.82	18.4
Fuel, Power & Light	10.67	299.63	322.61	320.95	7.1
Clothing, Bedding & Footwear	8.53	114.03	119.24	119.90	5.1
Miscellaneous	25.8	150.41	163.36	164.73	9.5

(P): Provisional

MONTHLY BULLETIN ON STATE ECONOMY

updated as on 31st October, 2011

Important Economic Indicators of the State	Unit of description	Period of data	Observations Latest data	Data for corresponding period of the previous year	Percentage change from previous to latest period
STATE ECONOMY					
Gross State Domestic Product at current prices	₹ Crore	2009-10	9,01,330	7,72,945	16.6
Agriculture & Allied Activities	₹ Crore	2009-10	91,806	79,259	15.8
Industries	₹ Crore	2009-10	2,78,731	2,41,276	15.5
Services	₹ Crore	2009-10	5,30,793	4,52,410	17.3
Gross State Domestic Product at constant (2004-05) prices	₹ Crore	2009-10	7,01,550	6,45,492	8.7
Agriculture & Allied Activities	₹ Crore	2009-10	59,165	57,374	3.1
Industries	₹ Crore	2009-10	2,09,433	1,93,029	8.5
Services	₹ Crore	2009-10	4,32,952	3,95,089	9.6
All-India Index of Industrial Production (Base 2004-05 =100)					
General		September, 2011	163.2	160.3	1.9
Mining		September, 2011	111.0	117.7	-5.7
Manufacturing		September, 2011	175.7	172.1	2.1
All-India Wholesale Price Index (WPI) (Base 2004-05=100)					
All Commodities		October, 2011	156.8	142.9	9.7
Primary Articles		October, 2011	204.3	183.4	11.4
Fuel & Power		October, 2011	170.0	148.1	14.8
Manufactured Products		October, 2011	139.1	129.2	7.7
All-India Consumer Price Indices (CPI)					
CPI -Industrial Workers (CPI [IW])	2001=100	September, 2011	197.0	179.0	10.1
CPI-Rural Labourers (CPI [RL])	1986-87=100	September, 2011	614.0	562.0	9.3
CPI-Urban	2010=100	September, 2011	111.1	-	-
CPI-Rural	2010=100	September, 2011	114.6	-	-
FINANCIAL INDICATORS OF THE STATE GOVERNMENT					
Revenue Receipts	₹ Crore	April-September, 2011	51,830	44,483	16.5
a) Tax Revenue	₹ Crore	April-September, 2011	43,877	37,637	16.6
b) Non-Tax Revenue	₹ Crore	April-September, 2011	7,953	6,846	16.2
Revenue Expenditure	₹ Crore	April-September, 2011	50,976	41,727	22.2
a) Plan Expenditure	₹ Crore	April-September, 2011	4,830	3,585	34.7
b) Non-Plan Expenditure	₹ Crore	April-September, 2011	46,146	38,142	21.0
BANKING					
Broad Money (M ₃)	₹ Crore	Oct/21/2011	69,58,664	60,80,502	14.4
Bank Rate	Percent per annum	Oct/21/2011	6.00	6.00	
Treasury Bill Rates	Percent per annum	Oct/25/2011	8.65	6.85	
Aggregate Bank Deposits in the State	₹ Crore	As on 31/03/2011	14,71,685	12,24,329	20.2
Gross Credits Disbursed in the State	₹ Crore	As on 31/03/2011	11,96,639	9,95,343	20.2
CAPITAL MARKET					
Bombay Stock Exchange (Sensex)	1978-79= 100	Oct/25/2011	17255.00	20303.00	-15.0
National Stock Exchange (Nifty)	Nov 3, 1995 =1000	Oct/25/2011	5192.00	6106.00	-15.0
EXCHANGE RATES					
Rupees per US Dollar	-	Oct/28/2011	48.8350	44.4900	-8.9
Rupees per Euro	-	Oct/28/2011	69.2725	61.5700	-11.1
ENERGY					
Generation of Electricity	million units	April-September, 2011	22,608	20,844	8.5
Consumption of Electricity (Metered Sale)	million units	April-September, 2011	34,085	30,775	10.8
Peak Demand	MW	As on 29th September, 2011	19,854		

Note : The data for the current period is purely preliminary or provisional

The figures for generation & consumption of electricity are only for State owned company

The Govt. of India started releasing IIP with Base year 2004-05 from 10 th June, 2011