

**CONSUMER PRICE INDICES IN RURAL & URBAN AREAS OF MAHARASHTRA**

MONTH APRIL 2009 (PROVISIONAL)

BASE YEAR 2003=100

GROUP	RURAL INDEX					URBAN INDEX				
	WEIGHT	PREVIOUS YEAR	PREVIOUS MONTH	CURRENT MONTH	PERCENTGE TO PREVIOUS MONTH (INCREASE OR DECREASE)	WEIGHT	PREVIOUS YEAR	PREVIOUS MONTH	CURRENT MONTH	PERCENTGE TO PREVIOUS MONTH (INCREASE OR DECREASE)
		APRIL 2008	MARCH 2009	APRIL 2009			APRIL 2008	MARCH 2009	APRIL 2009	
GENERAL INDEX	100.00	137.66	147.78	149.37	(+) 1.08	100.00	134.22	142.94	144.19	(+) 0.87
I. FOOD	52.85	132.90	143.89	146.65	(+) 1.92	45.80	132.38	143.31	145.83	(+) 1.76
II. PAN,SUPARI & TOBACCO	2.15	131.93	147.02	148.27	(+) 0.85	1.54	125.64	139.66	139.64	(-) 0.01
III. FUEL,POWER & LIGHT	10.67	231.04	237.13	237.12	(-) 0.01	10.28	216.10	223.59	223.35	(-) 0.11
IV. CLOTHING ,BEDDING& FOOTWEAR	8.53	107.78	110.23	110.08	(-) 0.14	7.51	107.21	110.42	110.66	(+) 0.22
V. MISCELLANEOUS	25.80	119.16	131.30	131.75	(+) 0.34	34.87	118.71	125.85	126.13	(+) 0.22

DIRECTORATE OF ECONOMICS & STATISTICS, GOVERNMENT OF MAHARASHTRA

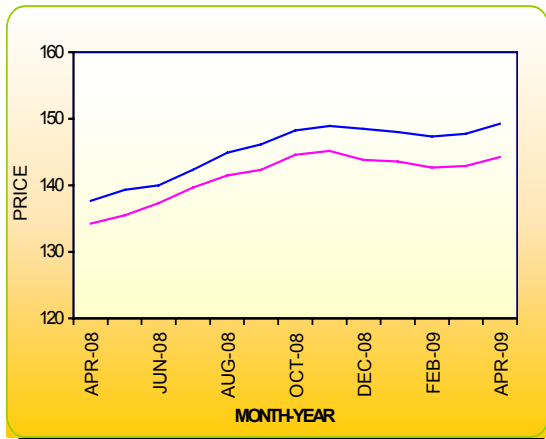
CONSUMER PRICE INDEX IN RURAL & URBAN AREAS OF MAHARASHTRA

MONTH- APRIL, 2009 (PROVISIONAL)

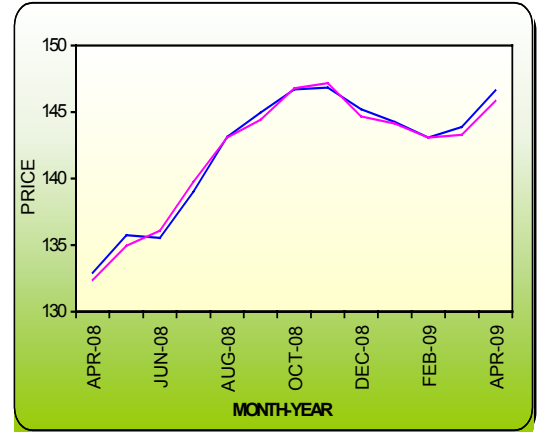
BASE YEAR 2003=100

RURAL URBAN

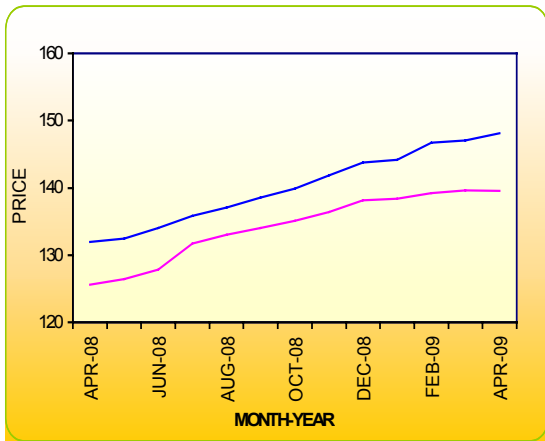
GENERAL INDEX



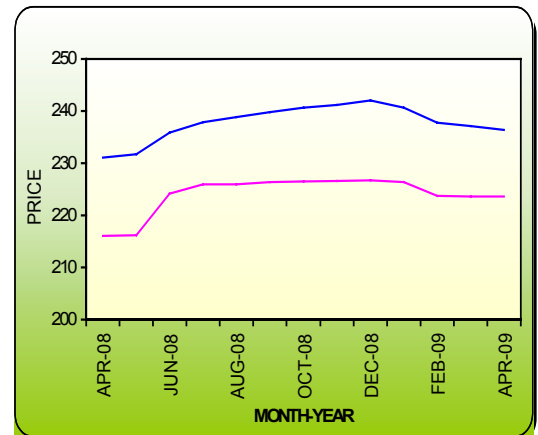
FOOD GROUP



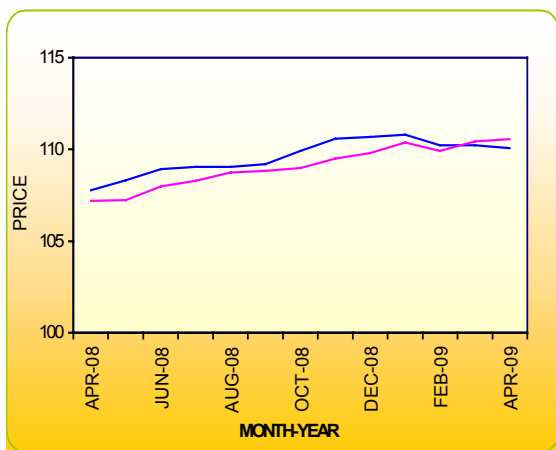
PAN, SUPARI & TOBACCO



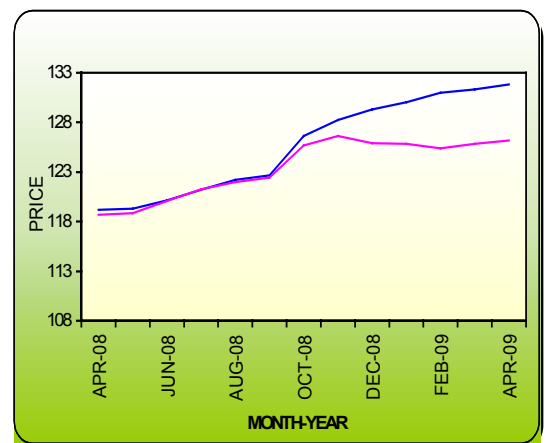
FUEL, POWER, LIGHT & LUBRICANT



CLOTHING, BEDDING & FOOTWEAR



MISCELLANEOUS



## Groupwise Findings of Consumer Price Indices For Rural & Urban Areas In Maharashtra

**April, 2009 (Provisional)**

(Base year 2003=100)

RURAL	URBAN
<p><b><u>General Index</u></b> * As compared to March, 2009 this index increased by 1.08 per cent in April, 2009. * The increase in this index is mainly due to increase in prices of rice, tur dal, potato, tomato, cauliflower, palak and sugar in 'food' group.</p>	<p><b><u>General Index</u></b> * As compared to March, 2009 this index increased by 0.87 per cent in April, 2009. * The increase in this index is mainly due to increase in prices of tur dal, milk, potato, tomato, cauliflower, apple and sugar in 'food' group.</p>
<p><b><u>Index of Food group</u></b> * As compared to March, 2009 this index increased by 1.92 per cent in April, 2009. * This increase is the combined effect of increase in the prices of rice, tur dal, moong dal, potato, tomato, cabbage, cauliflower, palak, garlic, sugar and decrease in prices of ragi, refined oil and onion.</p>	<p><b><u>Index of Food group</u></b> * As compared to March, 2009 this index increased by 1.76 per cent in April, 2009. * This increase is the combined effect of increase in prices of tur dal, moong dal, milk, potato, tomato, cauliflower, palak, apple, sugar and decrease in prices of onion.</p>
<p><b><u>Index of Pan, Supari and Tobacco group</u></b> * As compared to March, 2009 this index increased by 0.85 per cent in April, 2009. * This increase is due to increase in prices of bidi, country liquor &amp; cigarette.</p>	<p><b><u>Index of Pan, Supari and Tobacco group</u></b> * As compared to March, 2009 this index decreased by 0.01 per cent in April, 2009. * The slight decrease is the combined effect of decrease in prices of cigarette and foreign liquor and increase in prices of supari.</p>
<p><b><u>Index of fuel, power, light &amp; lubricant group</u></b> * As compared to March, 2009 this index remained near by constant in April, 2009.</p>	<p><b><u>Index of fuel, power, light &amp; lubricant group</u></b> * As compared to March, 2009 this index decreased by 0.11 per cent in April, 2009. * This decrease is the combined effect of decrease in the prices of LPG Gas and increase in prices of firewood</p>
<p><b><u>Index of Clothing, Bedding and footwear group</u></b> * As compared to March, 2009 this index decreased by 0.14 per cent in April, 2009. * This decrease is mainly due to combined effect of decrease in prices of cloth for shirt and blouse piece and increase in prices of banian.</p>	<p><b><u>Index of Clothing, Bedding and footwear group</u></b> * As compared to March, 2009 this index increased by 0.22 per cent in April, 2009. * This increase is due to the increase in the prices of cloth for coat</p>
<p><b><u>Index of Miscellaneous group</u></b> * As compared to March, 2009 this index increased by 0.34 per cent in April, 2009. * This increase is mainly due to the combined effect of increase in prices of bath soap, hair cutting charges, note book, crocin and steel utensils and decrease in the prices of detergent soap.</p>	<p><b><u>Index of Miscellaneous group</u></b> * As compared to March, 2009 this index increased by 0.22 per cent in April, 2009. * This increase is mainly due to the combined effect of increase in prices of pathology charges, crocin, news paper, cable charges, hair cutting charges &amp; washing charges, bath soap and decrease in prices of note book, petrol, washing powder..</p>