

**Monthly Bulletin on Consumer Prices & Economy**  
**Directorate of Economics & Statistics**  
**Planning Department, Government of Maharashtra**

*Updated as on 30<sup>th</sup> April, 2011*

***About this Bulletin***

The Directorate of Economics & Statistics constantly monitors the consumer prices in the State through 142 centers (74 in urban areas & 68 in rural areas) spread throughout the State. A bulletin indicating the prices prevailing in the State and some major economic indicators of the State and also at the National Level is published in this bulletin on a monthly basis. A summary of these findings is placed below.

*Mrs. A. D. Deo,  
Add. Dir (Stat.), DES, Mumbai*

***Summary***

***1. Prices***

- The Consumer Price Indices compiled separately for urban and rural areas of the State for April, 2011 were 179.86 (P) and 188.85 (P) respectively, as against 179.36 & 187.43 during March, 2011 .
- The inflation rate based on state CPI during April, 2011 was 8.5 per cent and 10.4 per cent in urban and rural areas respectively.
- The increase in index during the month was mainly due to increase in the prices of jowar in food group. However the prices of wheat, onion, garlic & sugar have decreased in both urban & rural areas.
- The inflation rate based on All-India Wholesale Price Index (WPI) was 9.0 per cent (P) during March, 2011. The food inflation during the month was 9.5 per cent.
- During March, 2011 the All-India CPI for Industrial Workers, CPI (IW) increased by 8.8 per cent over the corresponding period of the previous year.

***2. Economic Indicators***

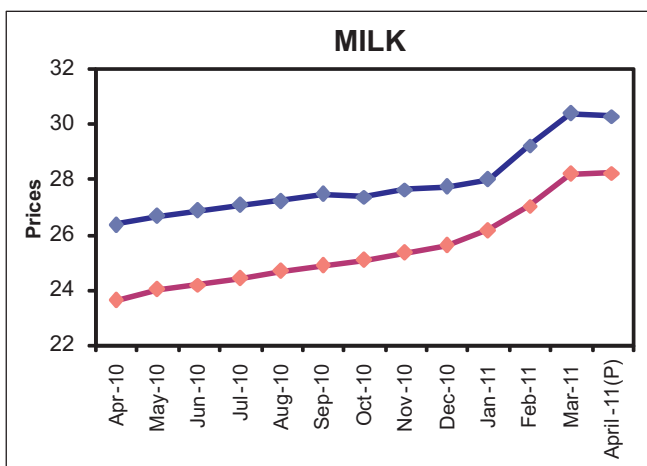
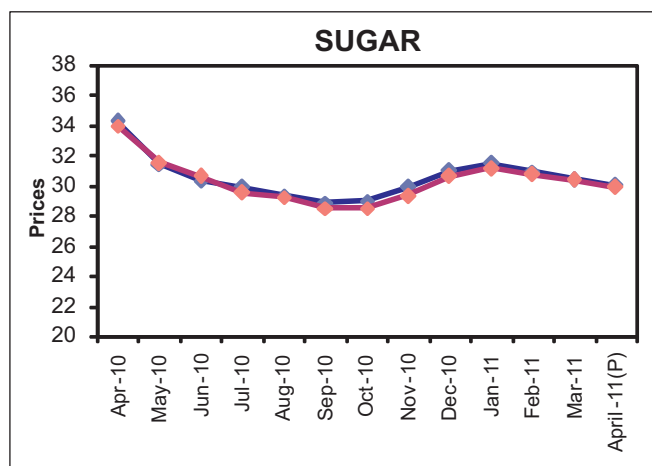
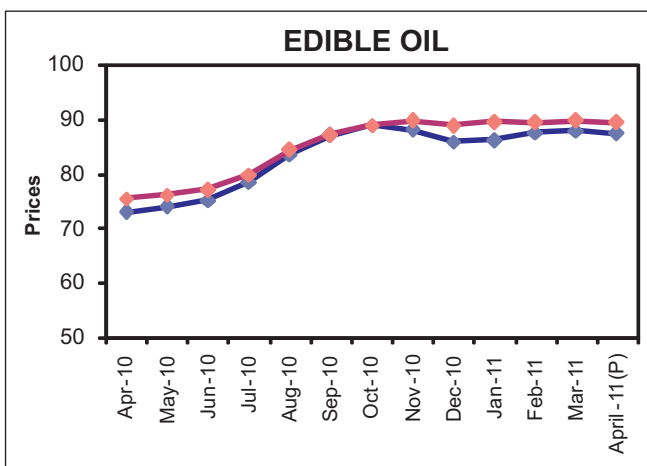
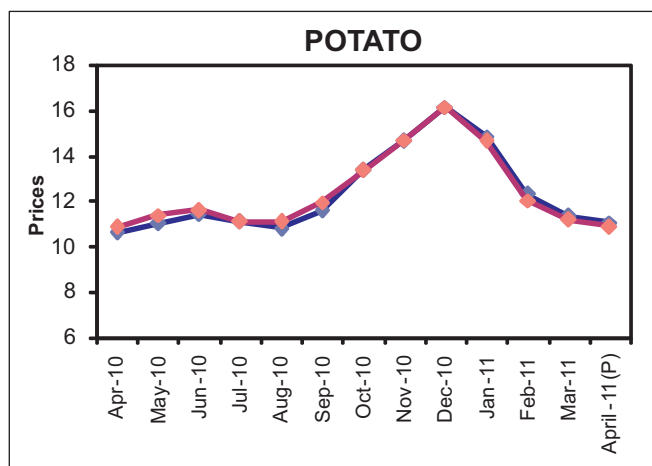
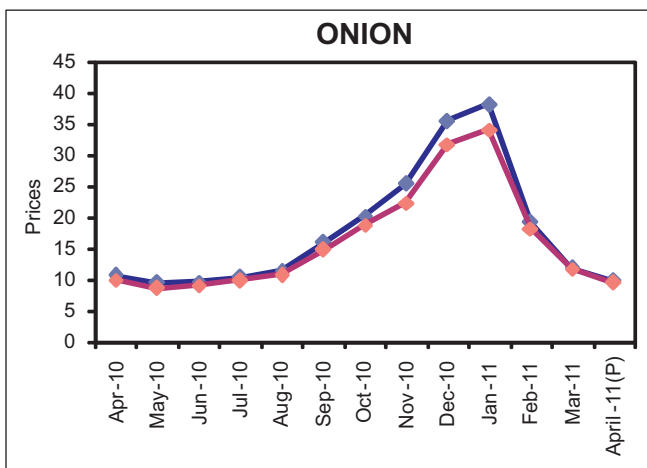
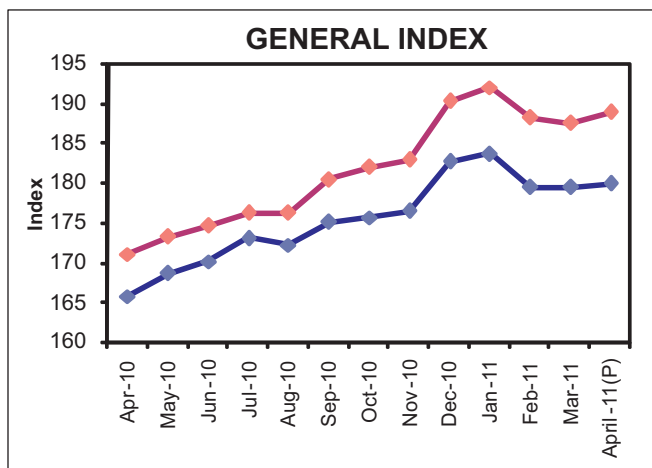
- All India Index of Industrial Production (IIP) during February, 2011 was 342.9, more by 3.6 per cent while the Index of Manufacturing sector was 373.9 more by 3.5 per cent over the corresponding period of the previous year.
- The broad money supply (M<sub>3</sub>) in the economy as on 8th April, 2011 was more by 17.0 per cent than that was prevailing on the corresponding day of the previous year.
- The revenue receipts of the State Government during 2010-11 upto February, 2011 were ₹ 87,314 crore, of which tax revenue was ₹ 73,963 crore .
- The revenue expenditure of the State Government during 2010-11 upto February, 2011 was ₹ 80,437 crore of which, plan expenditure was ₹ 8,119 crore.
- As on April 29, 2011 Sensex of Bombay Stock Exchange was 19,136 and Nifty of National Stock Exchange was 5,750.

# CONSUMER PRICE INDICES IN RURAL & URBAN AREAS OF MAHARASHTRA AND STATE AVERAGE PRICES OF IMPORTANT COMMODITIES

MONTH: APRIL, 2011 (P)



BASE YEAR 2003=100



# CONSUMER PRICE INDICES IN URBAN & RURAL AREAS OF MAHARASHTRA

MONTH: APRIL, 2011 (P)

BASE YEAR 2003=100

## Urban Index

Groups	Weight	April, 2010	March, 2011	April, 2011 (P)	% Change over the Previous Year
General Index	100.0	165.72	179.36	179.86	8.5
Food	45.80	171.18	188.00	188.33	10.0
Pan, Supari & Tobacco	1.54	158.56	182.16	185.29	16.9
Fuel, Power & Light	10.28	277.98	284.48	284.55	2.4
Clothing, Bedding & Footwear	7.51	115.47	121.90	122.41	6.0
Miscellaneous	34.87	136.61	149.28	150.01	9.8

## Rural Index

Groups	Weight	April, 2010	March, 2011	April, 2011 (P)	% Change over the Previous Year
General Index	100.0	171.01	187.43	188.85	10.4
Food	52.85	170.55	188.40	190.26	11.6
Pan, Supari & Tobacco	2.15	163.97	187.08	192.53	17.4
Fuel, Power & Light	10.67	292.12	310.40	312.78	7.1
Clothing, Bedding & Footwear	8.53	112.06	115.08	115.50	3.1
Miscellaneous	25.8	141.96	158.57	158.68	11.8

# MONTHLY BULLETIN ON STATE ECONOMY

updated as on 30<sup>th</sup> April, 2011

Important Economic Indicators of the State	Unit of description	Period of data	Observations Latest data	Data for corresponding period of the previous year	Percentage change from previous to latest period
<b>STATE ECONOMY</b>					
<b>Gross State Domestic Product at current prices</b>	₹ Crore	2009-10	901,330	772,945	16.6
Agriculture & Allied Activities	₹ Crore	2009-10	91,806	79,259	15.8
Industries	₹ Crore	2009-10	278,731	241,276	15.5
Services	₹ Crore	2009-10	530,793	452,410	17.3
<b>Gross State Domestic Product at constant (2004-05) prices</b>	₹ Crore	2009-10	701,550	645,492	8.7
Agriculture & Allied Activities	₹ Crore	2009-10	59,165	57,374	3.1
Industries	₹ Crore	2009-10	209,433	193,029	8.5
Services	₹ Crore	2009-10	432,952	395,089	9.6
<b>All-India Index of Industrial Production (Base 1993-94 =100)</b>					
General		February, 2011	342.9	331.1	3.6
Mining		February, 2011	204.5	203.3	0.6
Manufacturing		February, 2011	373.9	361.1	3.5
<b>All-India Wholesale Price Index (WPI) (Base 2004-05=100)</b>					
All Commodities		March, 2011	148.0	135.8	9.0
Primary Articles		March, 2011	187.4	165.9	13.0
Fuel & Power		March, 2011	158.2	140.1	12.9
Manufactured Products		March, 2011	133.4	125.6	6.2
<b>All-India Consumer Price Indices (CPI)</b>					
CPI -Industrial Workers (CPI [IW])	2001=100	March, 2011	185.0	170.0	8.8
CPI-Rural Labourers (CPI [RL])	1986-87=100	March, 2011	584.0	536.0	9.0
CPI-Urban	2010=100	March, 2011	104.0	-	-
CPI-Rural	2010=100	March, 2011	107.0	-	-
<b>FINANCIAL INDICATORS OF THE STATE GOVERNMENT</b>					
<b>Revenue Receipts</b>	₹ Crore	April -2010 -February, 2011	87,314	71,280	22.5
a) Tax Revenue	₹ Crore	April -2010 -February, 2011	73,963	56,845	30.1
b) Non-Tax Revenue	₹ Crore	April -2010 -February, 2011	13,351	14,435	-7.5
<b>Revenue Expenditure</b>	₹ Crore	April -2010 -February, 2011	80,437	69,133	16.4
a) Plan Expenditure	₹ Crore	April -2010 -February, 2011	8,119	8,293	-2.1
b) Non-Plan Expenditure	₹ Crore	April -2010 -February, 2011	72,318	60,840	18.9
<b>BANKING</b>					
Broad Money (M <sub>3</sub> )	₹ Crore	April/08/2011	6628680	5666610	17.0
Bank Rate	₹ Crore	April/15/2011	6.00	6.00	
Treasury Bill Rates	₹ Crore	April/20/2011	7.44	4.17	
Aggregate Bank Deposits in the State	₹ Crore	As on 30/09/2010	1,193,866	1,036,974	15.1
Gross Credits Disbursed in the State	₹ Crore	As on 30/09/2010	999,574	884,714	13.0
<b>CAPITAL MARKET</b>					
Bombay Stock Exchange (Sensex)	1978-79= 100	April/29/2011	19136.00	17503.00	9.3
National Stock Exchange (Nifty)	Nov 3, 1995 =1000	April/29/2011	5750.00	5254.00	9.4
<b>EXCHANGE RATES</b>					
Rupees per US Dollar	-	April/22/2011	44.3000	44.4550	0.3
Rupees per Euro	-	April/22/2011	64.6913	59.5875	-7.9
<b>ENERGY</b>					
Generation of Electricity	million units	April 2010 -March 2011	47,958	51,052	-6.1
Consumption of Electricity (Metered Sale)	million units	April 2010 -March 2011	62,440	55,392	12.7
Peak Demand	MW	As on 29/03/2011	19,764	--	

Note : The data for the current period is purely preliminary or provisional

The figures for generation & consumption of electricity are only for State owned companies

This Bulletin is also available on <http://mahades.maharashtra.gov.in>