

Monthly Bulletin on Consumer Prices & Economy
Directorate of Economics & Statistics
Planning Department, Government of Maharashtra

Updated as on 31st August, 2011

About this Bulletin

The Directorate of Economics & Statistics constantly monitors the consumer prices in the State through 142 centers (74 in urban areas & 68 in rural areas) spread throughout the State. A bulletin indicating the prices prevailing in the State and some major economic indicators of the State and also at the National Level is published in this bulletin on a monthly basis. A summary of these findings is placed below.

*Mrs. A. D. Deo,
Add. Dir (Stat.), DES, Mumbai*

Summary

1. Prices

- The Consumer Price Indices compiled separately for urban & rural areas of the State for August, 2011 were 187.2 (P) and 196.2 (P) respectively, as against 186.7 & 194.2 during July, 2011.
- The inflation based on CPI during the month was 8.7 per cent and 11.3 per cent in urban and rural areas respectively.
- The increase in index during the month was mainly due to increase in the prices of onion, milk and edible oil in both urban and rural areas in 'food group'. Also increase in prices of fire wood in both urban and rural areas of 'fuel, power & light' group has impact on general index.
- The All-India CPI for urban and rural areas (with base 2010) for July, 2011 increased by 8.9 per cent and 11.6 per cent respectively.
- The inflation rate based on All-India Wholesale Price Index (WPI) almost reached to double digit i.e. 9.8 per cent (P) during August, 2011. The food inflation during the month was 9.6 per cent.
- During July, 2011 the All-India CPI for Industrial Workers, CPI (IW) increased by 8.4 per cent over the corresponding period of the previous year.

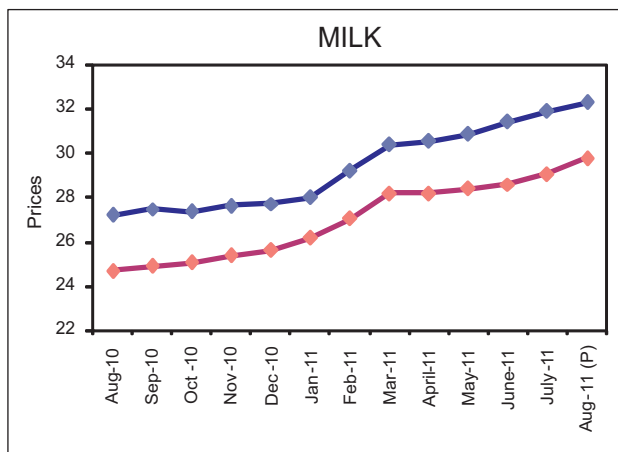
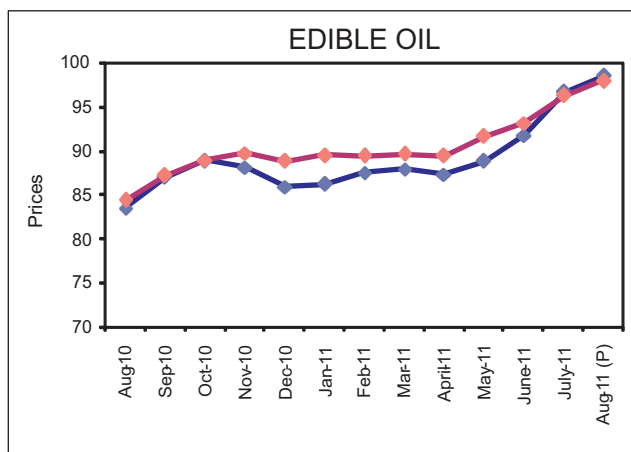
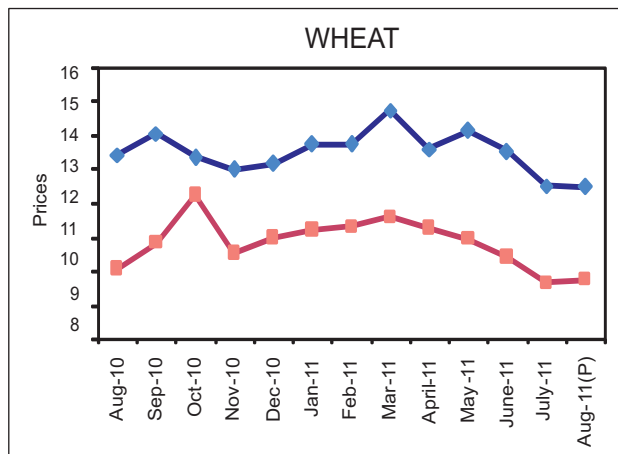
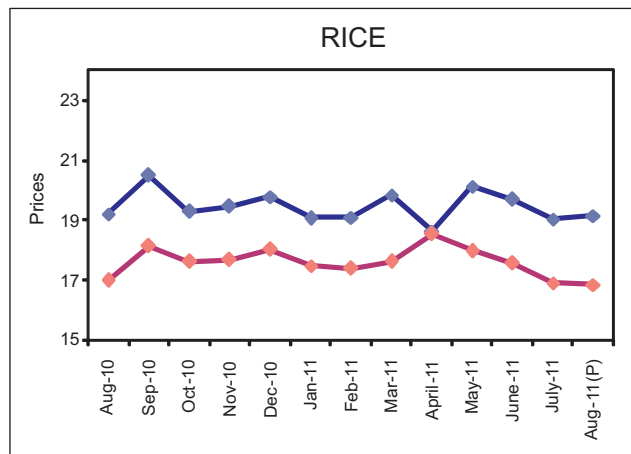
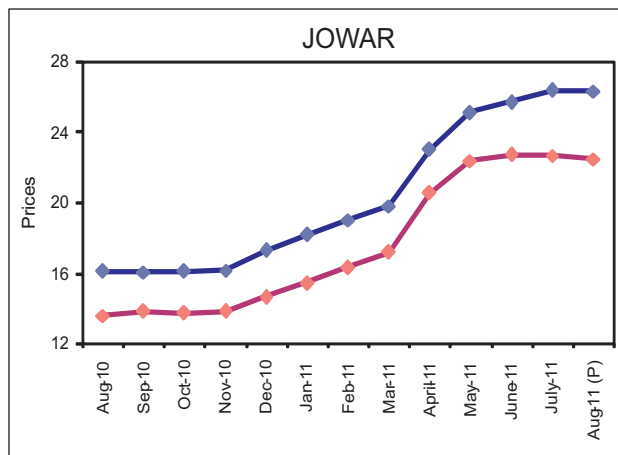
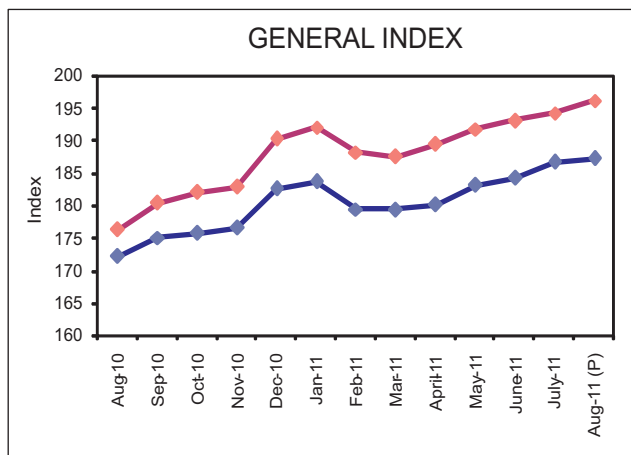
2. Economic Indicators

- All India Index of Industrial Production (IIP) during July, 2011 was 166.6 more by 3.3 per cent while the Index of Manufacturing sector was 176.0 more by 2.3 per cent over the corresponding period of the previous year.
- The broad money supply (M₃) in the economy as on 26th August, 2011 was more by 16.7 per cent than that was prevailing on the corresponding day of the previous year.
- The revenue receipts of the State Government during first quarter of 2011-12 were ₹ 27,080 crore, of which, tax revenue was ₹ 24,028 crore .
- During the same period, revenue expenditure of the State Government was ₹ 19,915 crore, of which, plan expenditure was ₹ 789 crore.
- As on August 29, 2011 Sensex of Bombay Stock Exchange was 16,416 and Nifty of National Stock Exchange was 4,920 less by 8.8 & 9.0 per cent respectively as compared to the corresponding day of the previous year.

CONSUMER PRICE INDICES IN RURAL & URBAN AREAS OF MAHARASHTRA AND STATE AVERAGE PRICES OF IMPORTANT COMMODITIES

MONTH: AUGUST, 2011 (P)

BASE YEAR 2003=100



CONSUMER PRICE INDICES IN URBAN & RURAL AREAS OF MAHARASHTRA

MONTH: AUGUST, 2011 (P)

BASE YEAR 2003=100

Urban Index

Groups	Weight	Aug, 2010	July, 2011	Aug, 2011 (P)	% Change over the Previous Year
General Index	100.0	172.15	186.70	187.21	8.7
Food	45.80	182.72	198.54	199.36	9.1
Pan, Supari & Tobacco	1.54	164.93	199.94	200.38	21.5
Fuel, Power & Light	10.28	270.57	291.02	291.66	7.8
Clothing, Bedding & Footwear	7.51	117.20	124.91	125.49	7.1
Miscellaneous	34.87	141.42	153.12	153.17	8.3

Rural Index

Groups	Weight	July, 2010	July, 2011	Aug, 2011 (P)	% Change over the Previous Year
General Index	100.0	176.19	194.21	196.15	11.3
Food	52.85	178.33	197.77	200.50	12.4
Pan, Supari & Tobacco	2.15	171.06	198.92	200.58	17.3
Fuel, Power & Light	10.67	286.48	316.91	319.07	11.4
Clothing, Bedding & Footwear	8.53	114.01	118.44	118.86	4.3
Miscellaneous	25.8	147.21	160.87	161.59	9.8

MONTHLY BULLETIN ON STATE ECONOMY

updated as on 31st August, 2011

Important Economic Indicators of the State	Unit of description	Period of data	Observations Latest data	Data for corresponding period of the previous year	Percentage change from previous to latest period
STATE ECONOMY					
Gross State Domestic Product at current prices	₹Crore	2009-10	9,01,330	7,72,945	16.6
Agriculture & Allied Activities	₹Crore	2009-10	91,806	79,259	15.8
Industries	₹Crore	2009-10	2,78,731	2,41,276	15.5
Services	₹Crore	2009-10	5,30,793	4,52,410	17.3
Gross State Domestic Product at constant (2004-05) prices	₹Crore	2009-10	7,01,550	6,45,492	8.7
Agriculture & Allied Activities	₹Crore	2009-10	59,165	57,374	3.1
Industries	₹Crore	2009-10	2,09,433	1,93,029	8.5
Services	₹Crore	2009-10	4,32,952	3,95,089	9.6
All-India Index of Industrial Production (Base 2004-05 =100)					
General		July, 2011	166.6	161.3	3.3
Mining		July, 2011	126.7	123.3	2.8
Manufacturing		July, 2011	176.0	172.1	2.3
All-India Wholesale Price Index (WPI) (Base 2004-05=100)					
All Commodities		August, 2011	154.9	141.1	9.8
Primary Articles		August, 2011	199.6	177.3	12.6
Fuel & Power		August, 2011	167.0	148.0	12.8
Manufactured Products		August, 2011	138.3	128.3	7.8
All-India Consumer Price Indices (CPI)					
CPI -Industrial Workers (CPI [IW])	2001=100	July, 2011	193.0	178.0	8.4
CPI-Rural Labourers (CPI [RL])	1986-87=100	July, 2011	604.0	554.0	9.0
CPI-Urban	2010=100	July, 2011	108.9	-	-
CPI-Rural	2010=100	July, 2011	111.6	-	-
FINANCIAL INDICATORS OF THE STATE GOVERNMENT					
Revenue Receipts	₹Crore	April-June, 2011	27,080	22,932	18.1
a) Tax Revenue	₹Crore	April-June, 2011	24,028	19,559	22.8
b) Non-Tax Revenue	₹Crore	April-June, 2011	3,052	3,373	-9.5
Revenue Expenditure	₹Crore	April-June, 2011	19,915	16,944	17.5
a) Plan Expenditure	₹Crore	April-June, 2011	789	699	12.9
b) Non-Plan Expenditure	₹Crore	April-June, 2011	19,126	16,245	17.7
BANKING					
Broad Money (M ₃)	₹Crore	August/26/2011	68,35,013	58,54,478	16.7
Bank Rate	Percent per annum	August/25/2011	6.00	6.00	
Treasury Bill Rates	Percent per annum	August/30/2011	8.39	6.07	
Aggregate Bank Deposits in the State	₹Crore	As on 31/12/2010	12,73,750	10,73,163	18.7
Gross Credits Disbursed in the State	₹Crore	As on 31/12/2010	11,00,529	8,86,753	24.1
CAPITAL MARKET					
Bombay Stock Exchange (Sensex)	1978-79= 100	Aug/29/2011	16416.00	17998.00	-8.8
National Stock Exchange (Nifty)	Nov 3, 1995 =1000	Aug/29/2011	4920.00	5409.00	-9.0
EXCHANGE RATES					
Rupees per US Dollar	-	Aug/19/2011	45.91	46.78	1.9
Rupees per Euro	-	Aug/19/2011	65.4038	59.9650	-8.3
ENERGY					
Generation of Electricity	million units	April-July, 2011	16,473	15,067	9.3
Consumption of Electricity (Metered Sale)	million units	April-June, 2011	17,384	15,894	9.4
Peak Demand	MW	As on 1 st July, 2011	18,101		

Note : The data for the current period is purely preliminary or provisional

The figures for generation & consumption of electricity are only for State owned company