

Monthly Bulletin on Consumer Prices & Economy
Directorate of Economics & Statistics
Planning Department, Government of Maharashtra

Updated as on 31st December, 2011

About this Bulletin

The Directorate of Economics & Statistics constantly monitors the consumer prices in the State through 142 centers (74 in urban areas & 68 in rural areas) spread throughout the State. A bulletin indicating the prices prevailing in the State and some major economic indicators of the State and also at the National Level is published in this bulletin on a monthly basis. A summary of these findings is placed below.

*Mrs. A. D. Deo,
Add. Dir (Stat.), DES, Mumbai*

Summary

1. Prices

- The Consumer Price Indices compiled separately for urban & rural areas of the State for December, 2011 were 192.5 (P) and 201.0 (P) respectively, as against 193.1 & 202.1 during November, 2011.
- The inflation based on CPI during the month was 5.4 per cent and 5.7 per cent in urban and rural areas respectively.
- The decrease in the prices of vegetables in both urban and rural areas of the State resulted in decrease in General index and food index during the month. Apart from this, increase in the prices of country liquor in 'Pan, supari & Tobacco' and fire wood in 'fuel, Power & light' Group, resulted in increase in indices of both groups.
- The All-India CPI for urban and rural areas (with base 2010) for November, 2011 increased by 12.5 per cent and 15.9 per cent respectively.
- During November, 2011, the inflation rate based on All-India Wholesale Price Index (WPI) was 9.1 per cent (P). The food inflation during the month was 8.5 per cent.
- During November, 2011 the All-India CPI for Industrial Workers, CPI (IW) increased by 9.3 per cent over the corresponding period of the previous year.

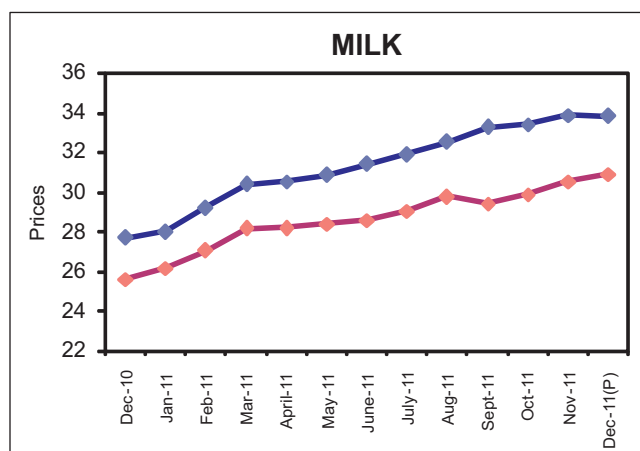
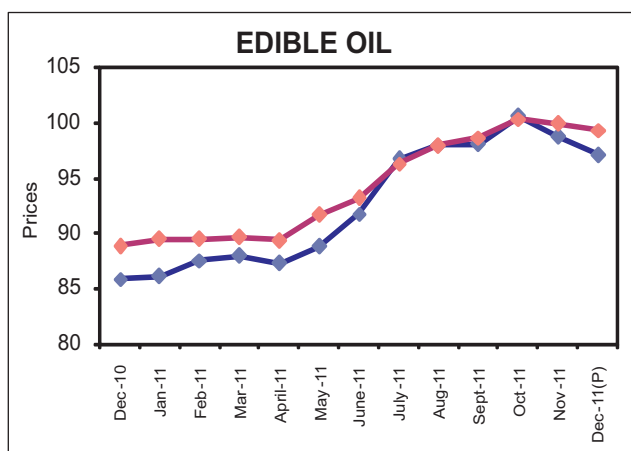
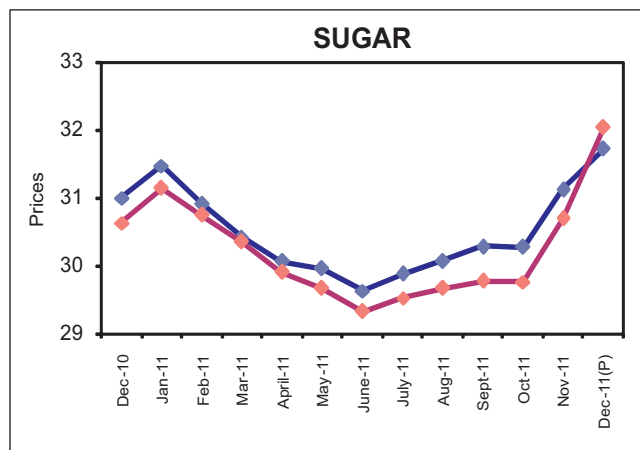
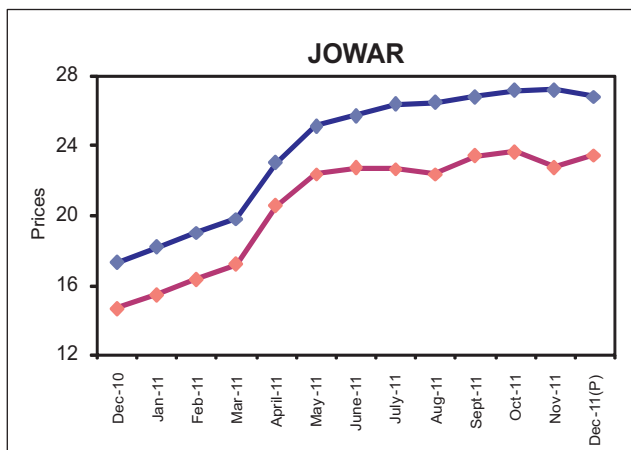
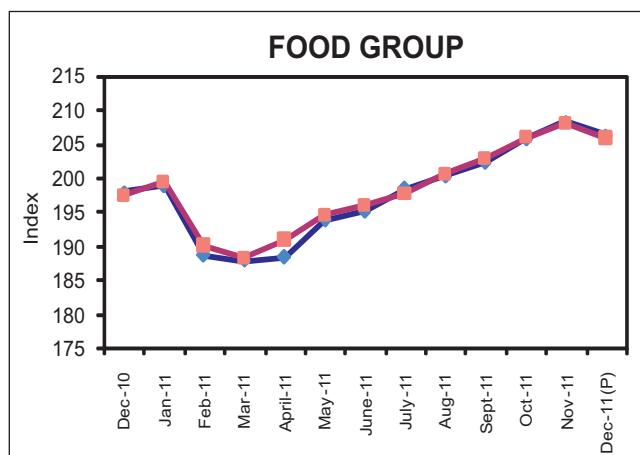
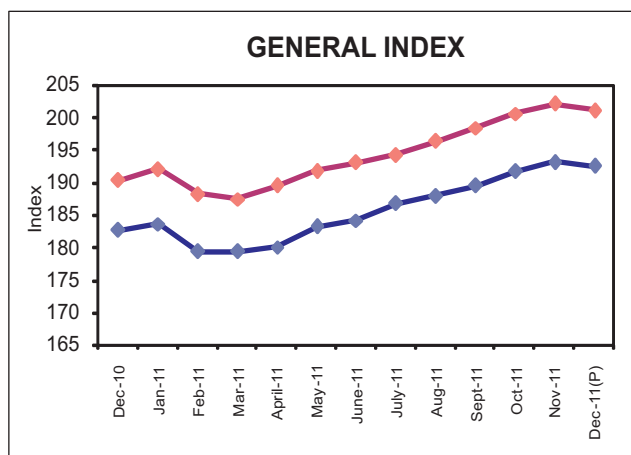
2. Economic Indicators

- All India Index of Industrial Production (IIP) during October, 2011 was 158.1 less by 5.1 per cent while the Index of Manufacturing sector was 165.9 less by 6.0 per cent over the corresponding period of the previous year.
- The broad money supply (M₃) in the economy as on 16th December, 2011 was more by 16.5 per cent than that was prevailing on the corresponding day of the previous year.
- The revenue receipts of the State Government during 2011-12 upto November, were ₹ 70,474 crore, of which, tax revenue was ₹ 59,743 crore .
- During the same period, revenue expenditure of the State Government was ₹ 68,255 crore, of which, plan expenditure was ₹ 7,783 crore.
- As on December 29, 2011 Sensex of Bombay Stock Exchange was 15,544 and Nifty of National Stock Exchange was 4,646 less by 23.0 per cent respectively as compared to the corresponding day of the previous year.

CONSUMER PRICE INDICES IN RURAL & URBAN AREAS OF MAHARASHTRA AND STATE AVERAGE PRICES OF IMPORTANT COMMODITIES

MONTH: DECEMBER, 2011 (P)

BASE YEAR 2003=100



CONSUMER PRICE INDICES IN URBAN & RURAL AREAS OF MAHARASHTRA

MONTH : DECEMBER, 2011 (P)

BASE YEAR 2003=100

Urban Index

Groups	Weight	Dec., 2010	Nov., 2011	Dec., 2011 (P)	% Change over the Previous Year
General Index	100.0	182.58	193.11	192.52	5.4
Food	45.80	198.08	208.38	206.45	4.2
Pan, Supari & Tobacco	1.54	172.35	211.98	215.33	24.9
Fuel, Power & Light	10.28	283.85	293.77	293.88	3.5
Clothing, Bedding & Footwear	7.51	119.92	127.96	129.03	7.6
Miscellaneous	34.87	146.34	156.6	157.02	7.3

Rural Index

Groups	Weight	Dec., 2010	Nov., 2011	Dec., 2011 (P)	% Change over the Previous Year
General Index	100.0	190.23	202.07	201.03	5.7
Food	52.85	197.55	208.22	205.98	4.3
Pan, Supari & Tobacco	2.15	175.99	208.85	209.17	18.9
Fuel, Power & Light	10.67	305.64	324.19	325.17	6.4
Clothing, Bedding & Footwear	8.53	113.57	120.43	120.80	6.4
Miscellaneous	25.8	154.06	165.43	165.42	7.4

(P): Provisional

MONTHLY BULLETIN ON STATE ECONOMY

updated as on 31st December, 2011

Important Economic Indicators of the State	Unit of description	Period of data	Observations Latest data	Data for corresponding period of the previous year	Percentage change from previous to latest period
STATE ECONOMY					
Gross State Domestic Product at current prices	₹ Crore	2009-10	9,01,330	7,72,945	16.6
Agriculture & Allied Activities	₹ Crore	2009-10	91,806	79,259	15.8
Industries	₹ Crore	2009-10	2,78,731	2,41,276	15.5
Services	₹ Crore	2009-10	5,30,793	4,52,410	17.3
Gross State Domestic Product at constant (2004-05) prices	₹ Crore	2009-10	7,01,550	6,45,492	8.7
Agriculture & Allied Activities	₹ Crore	2009-10	59,165	57,374	3.1
Industries	₹ Crore	2009-10	2,09,433	1,93,029	8.5
Services	₹ Crore	2009-10	4,32,952	3,95,089	9.6
All-India Index of Industrial Production (Base 2004-05 =100)					
General		October, 2011	158.1	166.6	-5.1
Mining		October, 2011	120.9	130.3	-7.2
Manufacturing		October, 2011	165.9	176.4	-6.0
All-India Wholesale Price Index (WPI) (Base 2004-05=100)					
All Commodities		November, 2011	156.9	143.8	9.1
Primary Articles		November, 2011	201.1	185.3	8.5
Fuel & Power		November, 2011	171.6	148.6	15.5
Manufactured Products		November, 2011	139.8	129.8	7.7
All-India Consumer Price Indices (CPI)					
CPI -Industrial Workers (CPI [IW])	2001=100	November, 2011	199.0	182.0	9.3
CPI-Rural Labourers (CPI [RL])	1986-87=100	November, 2011	621.0	569.0	9.1
CPI-Urban	2010=100	November, 2011	112.5	-	-
CPI-Rural	2010=100	November, 2011	115.9	-	-
FINANCIAL INDICATORS OF THE STATE GOVERNMENT					
Revenue Receipts	₹ Crore	April-November, 2011	70,474	60,810	15.9
a) Tax Revenue	₹ Crore	April-November, 2011	59,743	52,218	14.4
b) Non-Tax Revenue	₹ Crore	April-November, 2011	10,731	8,592	24.9
Revenue Expenditure	₹ Crore	April-November, 2011	68,255	56,094	21.7
a) Plan Expenditure	₹ Crore	April-November, 2011	7,783	5,046	54.2
b) Non-Plan Expenditure	₹ Crore	April-November, 2011	60,472	51,048	18.5
BANKING					
Broad Money (M ₃)	₹ Crore	Dec/16/2011	70,51,044	60,51,327	16.5
Bank Rate	Percent per annum	Dec/16/2011	6.00	6.00	
Treasury Bill Rates	Percent per annum	Dec/21/2011	8.39	7.19	
Aggregate Bank Deposits in the State	₹ Crore	As on 31/03/2011	14,71,685	12,24,329	20.2
Gross Credits Disbursed in the State	₹ Crore	As on 31/03/2011	11,96,639	9,95,343	20.2
CAPITAL MARKET					
Bombay Stock Exchange (Sensex)	1978-79= 100	Dec/29/2011	15544.00	20256.00	-23.2
National Stock Exchange (Nifty)	Nov 3, 1995 =1000	Dec/29/2011	4646.00	6060.00	-23.3
EXCHANGE RATES					
Rupees per US Dollar	-	Dec/23/2011	52.7150	45.0200	-14.6
Rupees per Euro	-	Dec/23/2011	68.8963	59.1200	-14.2
ENERGY					
Generation of Electricity	million units	April-November, 2011	30,296	28,756	5.4
Consumption of Electricity (Metered Sale)	million units	April-November, 2011	43,554	39,903	9.1
Peak Demand	MW	As on 16th November, 2011	20,907		

Note : The data for the current period is purely preliminary or provisional

The figures for generation & consumption of electricity are only for State owned company

The Govt. of India started releasing IIP with Base year 2004-05 from 10 th June, 2011