

Monthly Bulletin on Consumer Prices & Economy
Directorate of Economics & Statistics
Planning Department, Government of Maharashtra

Updated as on 30th September, 2011

About this Bulletin

The Directorate of Economics & Statistics constantly monitors the consumer prices in the State through 142 centers (74 in urban areas & 68 in rural areas) spread throughout the State. A bulletin indicating the prices prevailing in the State and some major economic indicators of the State and also at the National Level is published in this bulletin on a monthly basis. A summary of these findings is placed below.

*Mrs. A. D. Deo,
Add. Dir (Stat.), DES, Mumbai*

Summary

1. Prices

- The Consumer Price Indices compiled separately for urban & rural areas of the State for September, 2011 were 189.3 (P) and 197.3 (P) respectively, as against 187.9 & 196.3 during August, 2011.
- The inflation based on CPI during the month was 8.2 per cent and 9.3 per cent in urban and rural areas respectively.
- Increase in prices of 'Onion' in both urban and rural areas of the state had impact on index numbers. Apart from this, increase in prices of 'Jowar' in rural areas and 'Milk' in urban areas resulted in increase in 'food group' index.
- The All-India CPI for urban and rural areas (with base 2010) for August, 2011 increased by 9.8 per cent and 13.1 per cent respectively.
- During September, 2011, the inflation rate based on All-India Wholesale Price Index (WPI) was 9.7 per cent (P). The food inflation during the month was 9.2 per cent.
- During August, 2011 the All-India CPI for Industrial Workers, CPI (IW) increased by 9.0 per cent over the corresponding period of the previous year.

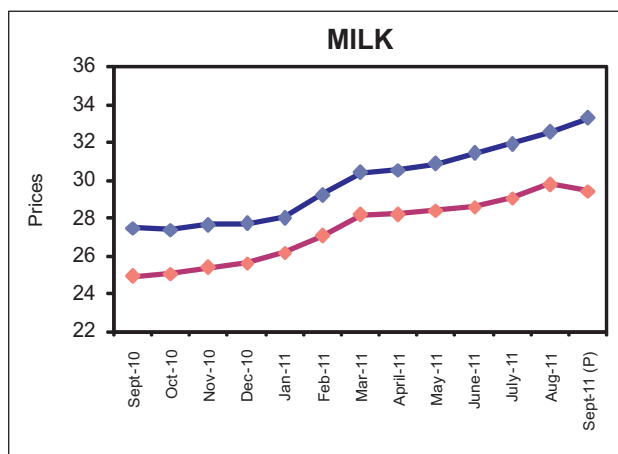
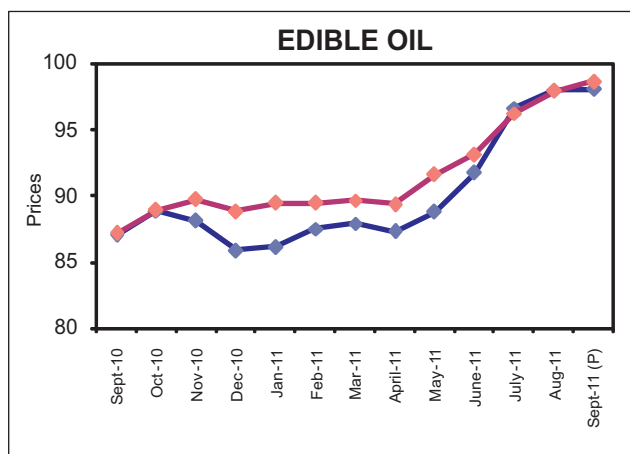
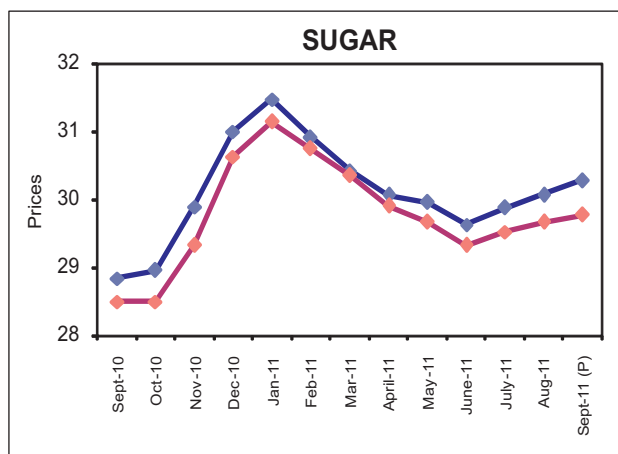
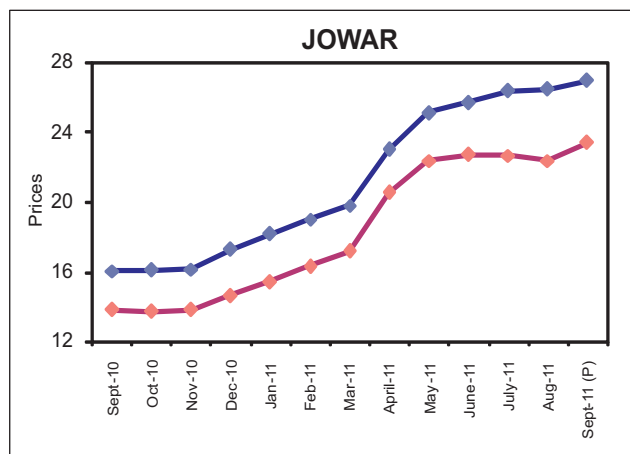
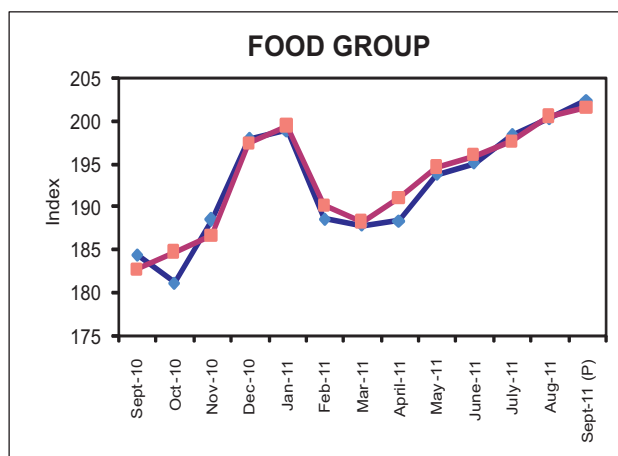
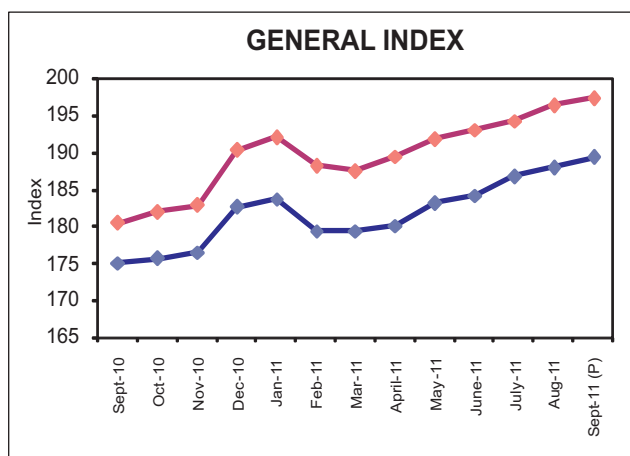
2. Economic Indicators

- All India Index of Industrial Production (IIP) during August, 2011 was 162.4 more by 4.0 per cent while the Index of Manufacturing sector was 172.6 more by 4.5 per cent over the corresponding period of the previous year.
- The broad money supply (M₃) in the economy as on 23rd September, 2011 was more by 16.3 per cent than that was prevailing on the corresponding day of the previous year.
- The revenue receipts of the State Government during 2011-12 upto August were ₹ 44,164 crore, of which, tax revenue was ₹ 38,144 crore .
- During the same period, revenue expenditure of the State Government was ₹ 41,199 crore, of which, plan expenditure was ₹ 3,529 crore.
- As on September 30, 2011 Sensex of Bombay Stock Exchange was 16,454 and Nifty of National Stock Exchange was 4,943 less by 18.0 per cent respectively as compared to the corresponding day of the previous year.

CONSUMER PRICE INDICES IN RURAL & URBAN AREAS OF MAHARASHTRA AND STATE AVERAGE PRICES OF IMPORTANT COMMODITIES

MONTH: SEPTEMBER, 2011 (P)

BASE YEAR 2003=100



CONSUMER PRICE INDICES IN URBAN & RURAL AREAS OF MAHARASHTRA

MONTH: SEPTEMBER, 2011 (P)

BASE YEAR 2003=100

Urban Index

Groups	Weight	Sept, 2010	Aug, 2011	Sept, 2011 (P)	% Change over the Previous Year
General Index	100.0	175.04	187.91	189.32	8.2
Food	45.80	184.57	200.45	202.55	9.7
Pan, Supari & Tobacco	1.54	168.62	201.23	204.31	21.2
Fuel, Power & Light	10.28	282.74	291.53	292.18	3.3
Clothing, Bedding & Footwear	7.51	117.52	125.60	126.63	7.8
Miscellaneous	34.87	143.47	153.73	154.47	7.7

Rural Index

Groups	Weight	Sept, 2010	Aug, 2011	Sept, 2011 (P)	% Change over the Previous Year
General Index	100.0	180.41	196.29	197.25	9.3
Food	52.85	182.79	200.66	201.66	10.3
Pan, Supari & Tobacco	2.15	173.62	200.66	200.84	15.7
Fuel, Power & Light	10.67	297.08	319.31	319.91	7.7
Clothing, Bedding & Footwear	8.53	113.82	118.98	119.13	4.7
Miscellaneous	25.8	149.87	161.66	163.03	8.8

MONTHLY BULLETIN ON STATE ECONOMY

updated as on 30th September, 2011

Important Economic Indicators of the State	Unit of description	Period of data	Observations Latest data	Data for corresponding period of the previous year	Percentage change from previous to latest period
STATE ECONOMY					
Gross State Domestic Product at current prices	₹ Crore	2009-10	9,01,330	7,72,945	16.6
Agriculture & Allied Activities	₹ Crore	2009-10	91,806	79,259	15.8
Industries	₹ Crore	2009-10	2,78,731	2,41,276	15.5
Services	₹ Crore	2009-10	5,30,793	4,52,410	17.3
Gross State Domestic Product at constant (2004-05) prices	₹ Crore	2009-10	7,01,550	6,45,492	8.7
Agriculture & Allied Activities	₹ Crore	2009-10	59,165	57,374	3.1
Industries	₹ Crore	2009-10	2,09,433	1,93,029	8.5
Services	₹ Crore	2009-10	4,32,952	3,95,089	9.6
All-India Index of Industrial Production (Base 2004-05 =100)					
General		August, 2011	162.4	156.1	4.0
Mining		August, 2011	117.6	121.7	-3.4
Manufacturing		August, 2011	172.6	165.2	4.5
All-India Wholesale Price Index (WPI) (Base 2004-05=100)					
All Commodities		Sept, 2011	155.8	142.0	9.7
Primary Articles		Sept, 2011	202.2	180.8	11.8
Fuel & Power		Sept, 2011	168.4	147.6	14.1
Manufactured Products		Sept, 2011	138.6	128.7	7.7
All-India Consumer Price Indices (CPI)					
CPI-Industrial Workers (CPI [IW])	2001=100	August, 2011	194.0	178.0	9.0
CPI-Rural Labourers (CPI [RL])	1986-87=100	August, 2011	610.0	556.0	9.7
CPI-Urban	2010=100	August, 2011	109.8	-	-
CPI-Rural	2010=100	August, 2011	113.1	-	-
FINANCIAL INDICATORS OF THE STATE GOVERNMENT					
Revenue Receipts	₹ Crore	April-August, 2011	44,164	37,092	19.1
a) Tax Revenue	₹ Crore	April-August, 2011	38,144	31,955	19.4
b) Non-Tax Revenue	₹ Crore	April-August, 2011	6,020	5,137	17.2
Revenue Expenditure	₹ Crore	April-August, 2011	41,199	33,985	21.2
a) Plan Expenditure	₹ Crore	April-August, 2011	3,529	2,417	46.0
b) Non-Plan Expenditure	₹ Crore	April-August, 2011	37,670	31,568	19.3
BANKING					
Broad Money (M ₃)	₹ Crore	Sept/23/2011	68,58,829	58,99,292	16.3
Bank Rate	Percent per annum	Sept/30/2011	6.00	6.00	
Treasury Bill Rates	Percent per annum	Sept/28/2011	8.44	6.27	
Aggregate Bank Deposits in the State	₹ Crore	As on 31/03/2011	14,71,685	12,24,329	20.2
Gross Credits Disbursed in the State	₹ Crore	As on 31/03/2011	11,96,639	9,95,343	20.2
CAPITAL MARKET					
Bombay Stock Exchange (Sensex)	1978-79= 100	Sept/30/2011	16454.00	20069.00	-18.0
National Stock Exchange (Nifty)	Nov 3, 1995 =1000	Sept/30/2011	4943.00	6030.00	-18.0
EXCHANGE RATES					
Rupees per US Dollar	-	Sept/30/2011	48.9150	44.9250	-8.2
Rupees per Euro	-	Sept/30/2011	66.6913	61.0263	-8.5
ENERGY					
Generation of Electricity	million units	April-August, 2011	19,475	18,014	8.1
Consumption of Electricity (Metered Sale)	million units	April-August, 2011	27,129	24,864	9.1
Peak Demand	MW	As on 17th August, 2011	18,005		

Note : The data for the current period is purely preliminary or provisional

The figures for generation & consumption of electricity are only for State owned company

The Govt. of India started releasing IIP with Base year 2004-05 from 10 th June, 2011