

CONSUMER PRICE INDEX FOR RURAL AND URBAN AREAS

(BASE YEAR 2003 = 100)

GROUP	RURAL			URBAN		
	WEIGHT	INDEX		WEIGHT	INDEX	
		FEB 2008	FEB 2009		FEB 2008	FEB 2009
I. FOOD	52.85	130.31	143.10	45.80	128.75	143.10
II. PAN,SUPARI & INTOXICANT	2.15	129.19	146.73	1.54	123.89	139.22
III. FUEL,POWER & LIGHT	10.67	229.28	237.75	10.28	215.92	223.69
IV. CLOTHING	8.53	107.42	110.23	7.51	106.95	109.91
V. MISCELLANEOUS	25.80	118.20	131.01	34.87	117.27	125.41
GENERAL INDEX	100.00	135.76	147.35	100.00	131.99	142.66

DIRECTORET OF ECONOMICS & STATISTICS, GOVERNMENT OF MAHARASHTRA

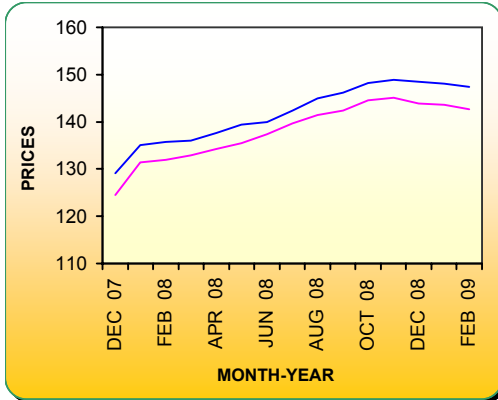
CONSUMER PRICE INDEX FOR RURAL & URBAN SECTOR IN MAHARASHTRA

MONTH-- FEBRUARY 2009

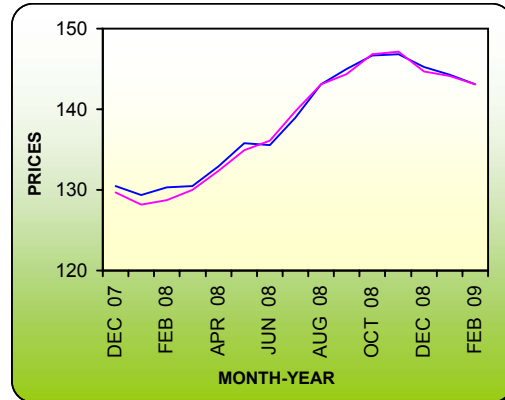
BASE YEAR -2003 = 100

— Rural — Urban

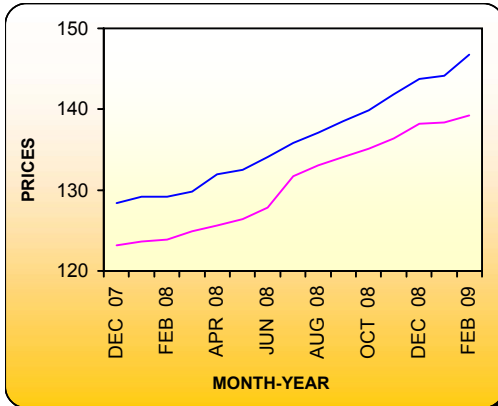
GENERAL INDEX



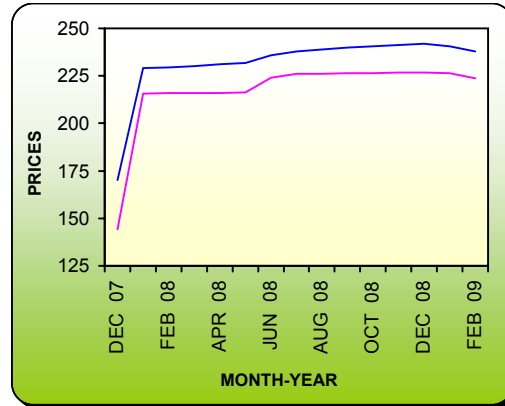
FOOD GROUP



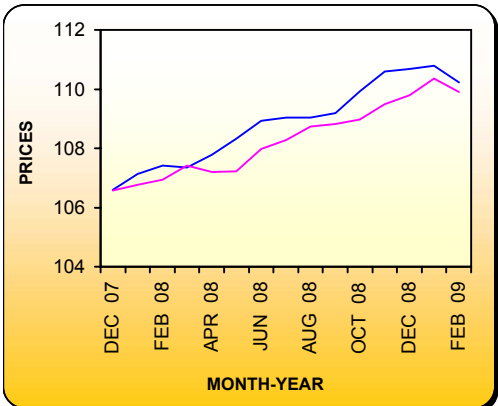
PAN, SUPARI & TOBACCO



FUEL, POWER & LIGHT



CLOTHING & BEDDING



MISCELLANEOUS

