



The background is a solid blue color. It features several sets of thin, white, wavy lines that flow across the page. Some lines are straight and curve gently, while others are more complex, overlapping to form a dense, grid-like pattern in certain areas. The overall effect is dynamic and modern.

3

Elementary Education

Overview

Education is universally acknowledged as one of the key inputs for balanced socioeconomic development. It opens up opportunities leading to both individual and group entitlements.

Education, in its broadest sense of development of youth, is the most crucial input for empowering people with skills & knowledge and giving them access to productive employment which will ultimately help to boost economic growth of the state.

The value of education has been well-appreciated in Maharashtra since the beginning and as a result, educational indicators for the state have been ahead of India as a whole for long period, although they have not been as good as in Kerala or Tamil Nadu.

Maharashtra's literacy rate is higher than the national average and second highest among major states in the country as per Census 2011. Male literacy rate has reached almost 90% and female literacy rate has crossed 75%. Gender gap in literacy rate is also reducing.

The 'Right of Children to Free and Compulsory Education Act 2009' has come into force from April 1, 2010 to provide free and compulsory education to children in the age group of 6-14 years in a neighbourhood school.

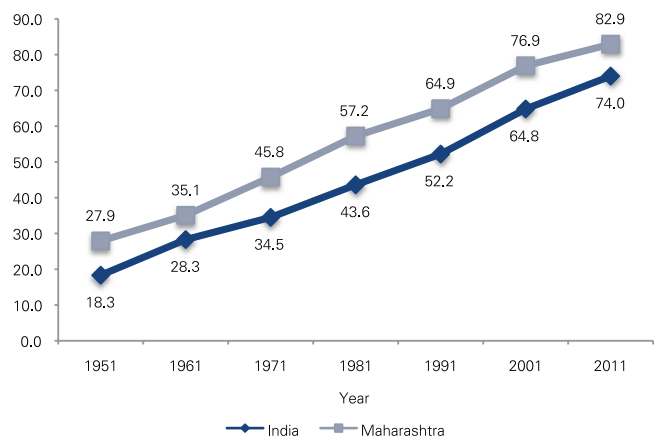
The number of educational institutions, teachers and enrolment figures has increased between 2001 and 2010.

The gender gap in enrolment at elementary level is less than 6%, but is more than 15% at secondary and higher secondary levels.

Sarva Shiksha Abhiyan (SSA) has strengthened basic infrastructural facilities in most schools. Pupil Teacher Ratio is also less than 1: 40 in about 95% schools. However, improving learning achievement level is a greater challenge for the state.



Trends in literacy rate*²⁴, India and Maharashtra

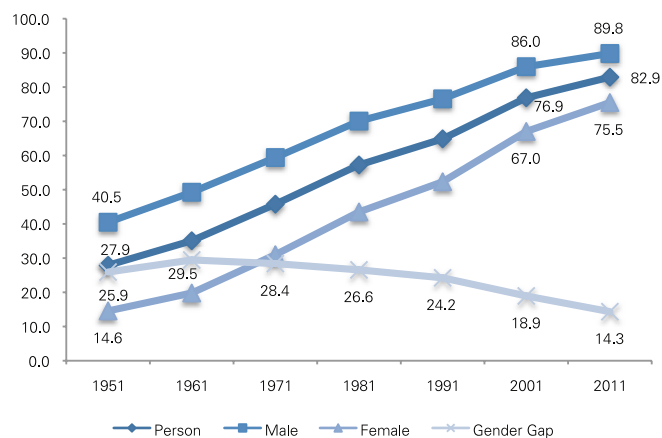


* Person (Both male and female) in %

Source: Census of India, RGI and Provisional Population Totals, Maharashtra, 2011

- The literacy rate for Maharashtra has remained consistently higher than the national average.
- The literacy rate for Maharashtra is the second highest in the country among the major states.

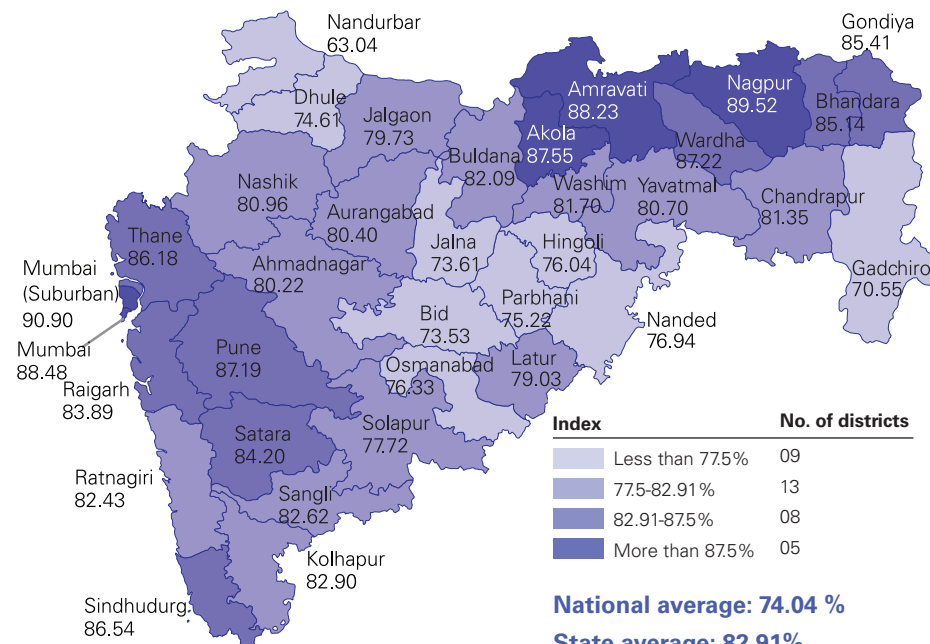
Trends in literacy rate by sex and gender gap in literacy rate, Maharashtra



Source: Census of India, RGI and Provisional Population Totals, Maharashtra, 2011

- The literacy rate has increased from 76.9 % to 82.9 % (by 6.0 % points) during 2001-11.
- Male literacy rate has increased from 86.0% to 89.8 % (by 3.8 % points) and female literacy rate increased from 67.0% to 75.5% (by 8.5% points) during 2001-11.
- Gender gap in literacy rate is continuously decreasing and is currently at 14.3% points in 2011.

Literacy rate by districts, Maharashtra, 2011



Index	No. of districts
Less than 77.5%	09
77.5-82.91%	13
82.91-87.5%	08
More than 87.5%	05

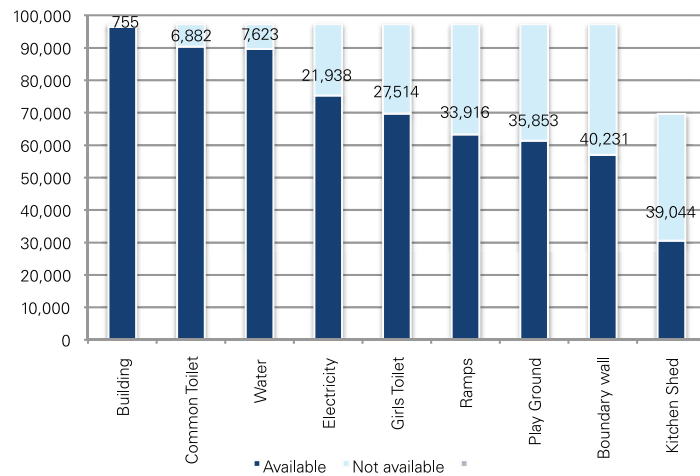
National average: 74.04 %
State average: 82.91%
Highest: 90.90% Mumbai (suburban)
Lowest: 63.04% Nandurbar

Source: Provisional Population Totals, Maharashtra, 2011

- Only four districts (Nandurbar, Gadchiroli, Bid and Jalna) have literacy rates lower than the national average (74.04%).
- In case of male literacy rates, only two districts (Nandurbar and Gadchiroli) and in case of female literacy rates, six districts (Nandurbar, Hingoli, Parbhani, Gadchiroli, Bid and Jalna) are lower than the national average.

Elementary schools and infrastructure facilities, 2010-11

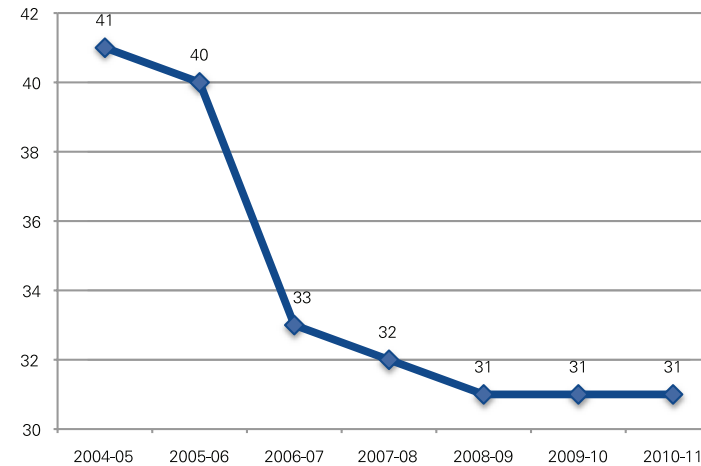
- The state, in year 2010-11, had a total 97,256 Elementary schools of which 49,085 are Primary schools, 48,171 are Upper Primary schools and 5, 595 are Secondary and Higher secondary schools.
- Of the total number of Elementary schools, 67,241 (69%) are Government managed schools and 30,015 (31%) schools are private managed schools.
- The ratio of Primary to Upper primary schools is 1.64, which is lower than the norm (2).
- Status of infrastructure facilities in Elementary schools (97,246) has been shown below:



Source: DISE, Maharashtra Prathmik Shiksha Parishad (MPSP), 2010-11

- Buildings are available in almost all schools but other infrastructural facilities are required in several schools.

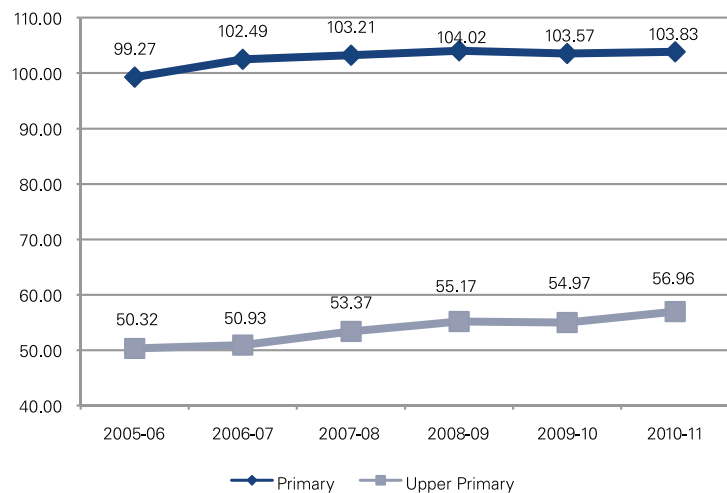
Student Classroom Ratio²⁵ (SCR)



Source: DISE, MPSP, 2004-05 to 2010-11

- Student Classroom Ratio (SCR) was 41 in 2004-05 and reduced to 31 in 2008-09. After 2008-09 it has remained constant.
- Nashik, Jalgaon, Thane and Mumbai (suburban) districts have SCR more than 35.
- 4,501 schools in the state have SCR more than 60.

Enrolment in Elementary schools (in lakhs)

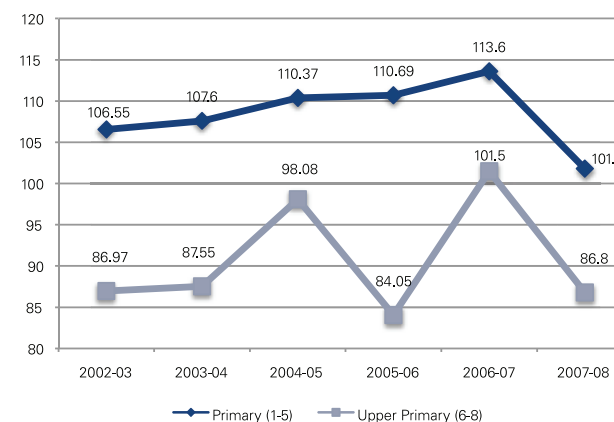


Source: DISE, MPSP, 2005-06 to 2010-11

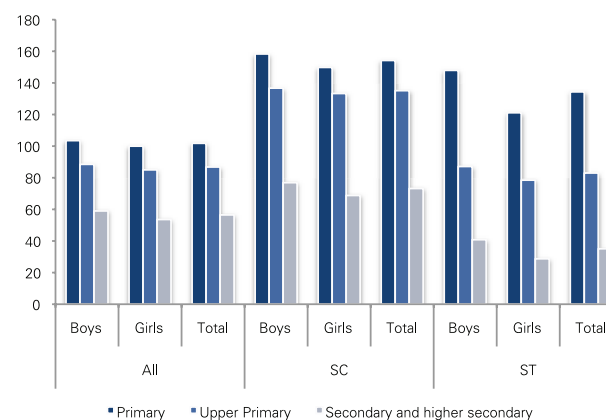
While enrolment for Primary classes increased by 4.59% between 2005-06 to 2010-11, it increased by 13.19% for Upper Primary classes.

Access of children in education

Gross Enrolment Ratio²⁶ by level



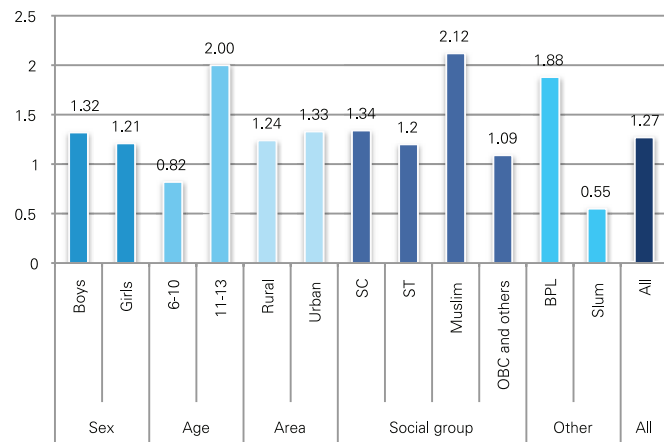
Gross Enrolment Ratio by sex and social groups , 2007-08



Source : Annual reports, MHRD, Govt. of India

- Gross Enrolment Ratio (GER) has varied over the years and does not give a clear picture.
- GER, especially for girls, is low at Secondary school level.
- GER cannot give a true picture about out-of-school children. Hence information can be captured only through household surveys or sample surveys. Household survey information is not available for Maharashtra in recent years but estimations are available from surveys and study done by IMRB-SRI for MHRD, NSSO and ASER.

Out-of-school children (6-13 years), 2009 (in %)

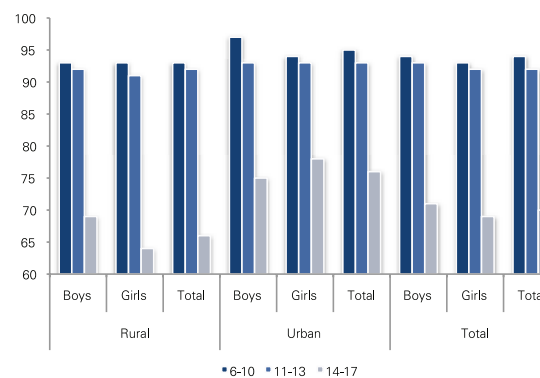


Source: Out-of-School Children Survey, IMRB-SRI, 2009 for MHRD

- MHRD, Government of India conducted a sample survey to identify out-of-school children through IMRB-SRI in year 2009 and estimated 81.51 lakh (4.28%) out-of-school children in the country in the age group 6-13 years.
- It is estimated that in Maharashtra there are 2,07,345 (1.27%) out-of-school children, which is very low compared to the national average.
- Among out-of-school children, 59% children have never enrolled and 41% are drop outs.
- 26.75% disabled children are out-of-school.
- Age, social group, BPL status play a significant and disability plays an even more significant role in child's schooling.

Out-of-school children

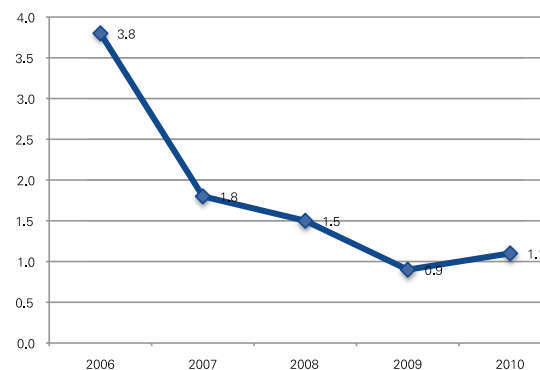
Age specific school attendance rate²⁷, NSSO, 2007-08



Source: NSSO, 64th round survey report, 2007-08

- Age specific attendance rates hardly vary between rural and urban areas or between boys and girls in the 6-10 and 11-13 year age groups.
- However, in the 14-17 year age group age specific attendance rates are significant differs between boys and girls and between rural and urban areas.
- Age specific attendance rate is significantly lower in the 14-17 years age group compared to 6-10 and 11-13 year age groups.

Trends of percentage of out-of-school children, 6-14 year age group in rural areas, ASER²⁸

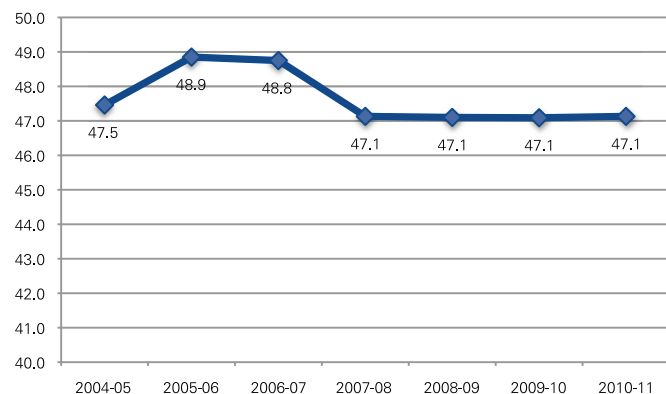


- According to ASER survey, incidence of out-of-school children has sharply reduced over the years, similar to findings of the IMRB-SRI study.

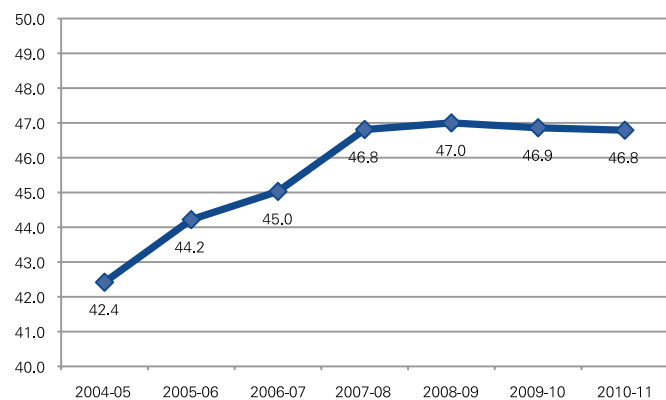
Source: ASER reports from 2006 to 2010

Share of girls enrolment to total enrolment

Percentage of girls' enrolment to total enrolment (Grade-1-5)



Percentage of girls' enrolment to total enrolment (Grade-6-8)

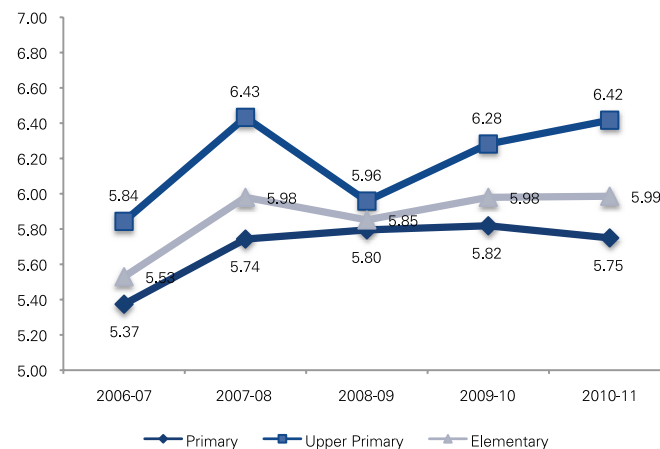


Source: DISE, MPSP, Mumbai, 2004-05 to 2010-11

- Share of girls enrolment in Primary classes has remained constant in the last seven years.
- In case of Upper Primary classes it increased from 42.4% (2004-05) to 46.8% (2010-11). It has, however, remained constant in the last four years.

Trends in gender gap (%) in enrolment²⁸

- Gender gap in enrolment is a good indicator for identifying exclusion issues. It shows percentage difference between boys and girls with reference to enrolment.
- Gender gap has varied between 5 to 6.5 % in last five years.



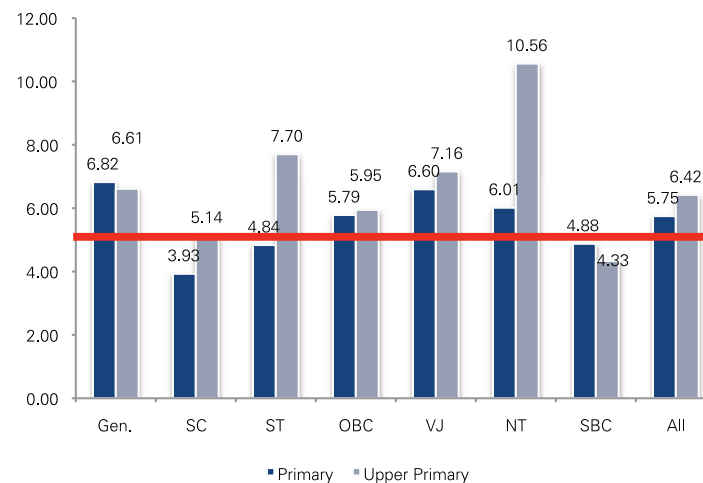
Source: DISE, MPSP, 2006-07 to 2010-11

Gender gap (%) in enrolment

- Although gender gap in enrolment in the state is closer to the norms, 27 of the 35 states and Union Territories in India have gender gap lower than Maharashtra at the Primary level and 24 states and Union Territories at the Upper Primary level (Calculated from data available in Flash statistics, 2009-10).
- Overall, the gender gap data paints a rosy picture for the state but a deeper analysis of disaggregated data highlights critical gaps at specific cluster, block and even social group levels.



Gender gap (%) in enrolment by social groups, 2010-11

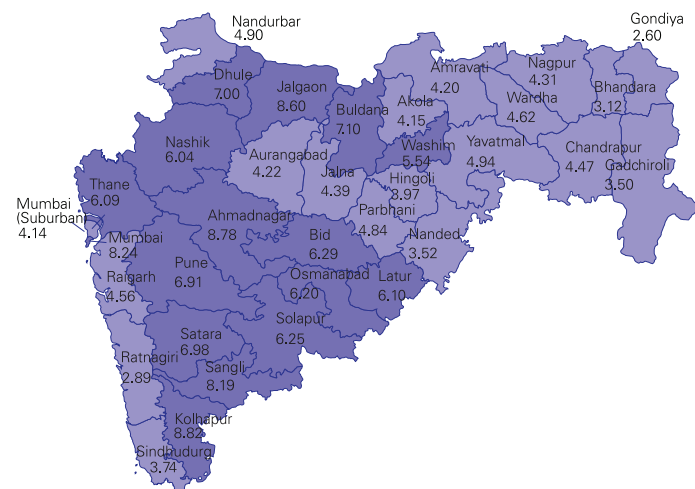


Gender gap is high in General, Schedule Tribe (ST), Vimukat Jati (VJ)³⁰ and Nomadic Tribe (NT) social groups

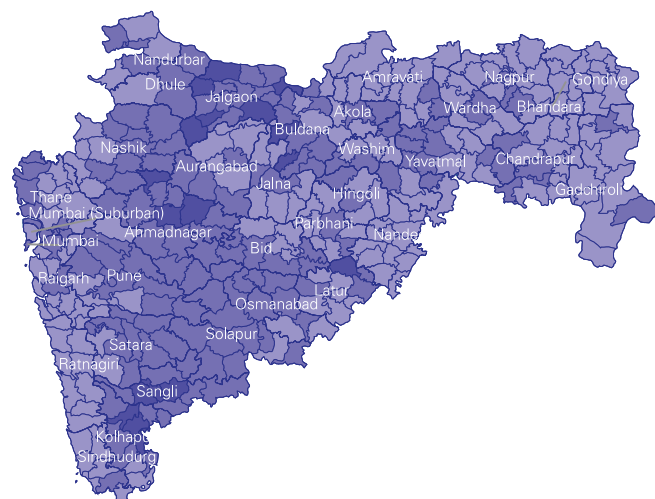
Source: DISE, 2010-11, MPSP, Mumbai

Gender gap (%) in enrolment at Primary level, 2010-11

By districts



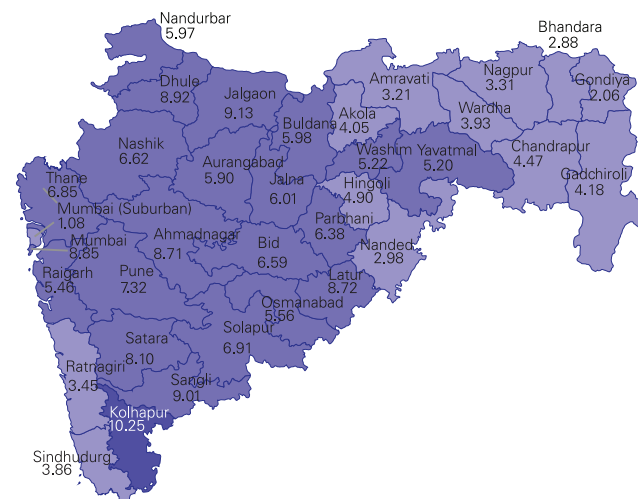
By talukas



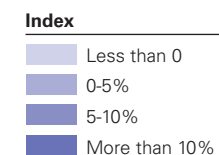
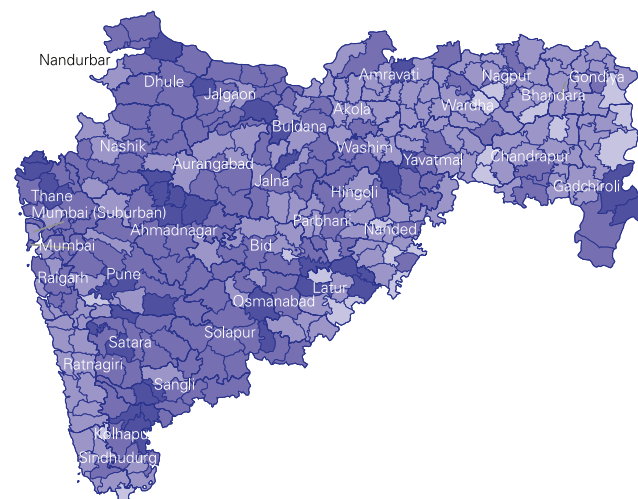
Source: DISE, 2010-11, Maharashtra Prathamik Shiksha Parishad, Mumbai

Gender gap (%) in enrolment at Upper Primary level, 2010-11

By districts



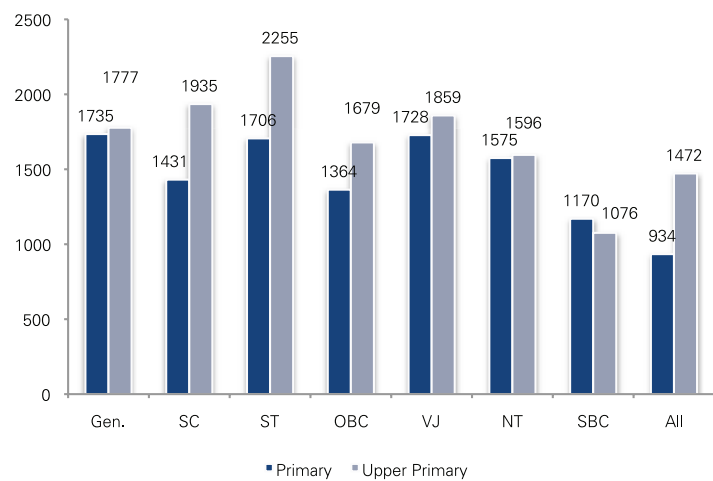
By talukas



Source: DISE, 2010-11, Maharashtra Prathamik Shiksha Parishad, Mumbai

Number of clusters having gender gap in enrolment of more than 10% by social groups, 2010-11

(Total number of clusters-5841)



934 clusters at the Primary level and 1472 clusters at the Upper Primary level are more critical

Source: DISE, 2010-11, Maharashtra Prathamik Shiksha Parishad, Mumbai

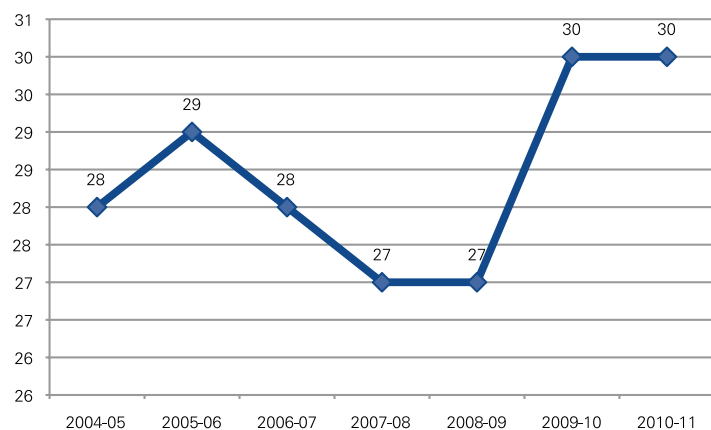


Shafiqat Hussain

Teachers

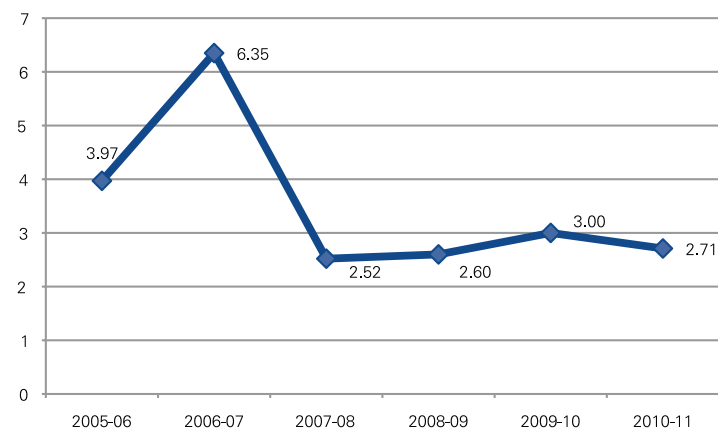
Pupil Teacher Ratio ³¹ (PTR)

- The state has 5,13,594 teachers in Elementary schools in year 2010-11. Pupil Teacher Ratio (PTR) decreased between 2004-05 to 2008-09 but increased and reached 30 in 2010-11. PTR varied across districts, with seven districts having a PTR of less than 20 and six districts with a PTR of more than 33.
- Schools having PTR more than 60 decreased over the period from 3,290 (6.35% , 2006-07) to 2,641 (2.71% , 2010-11).



Source: DISE, MPSP, 2004-05 to 2010-11

Percentage of schools having Pupil Teacher Ratio (PTR) > 60

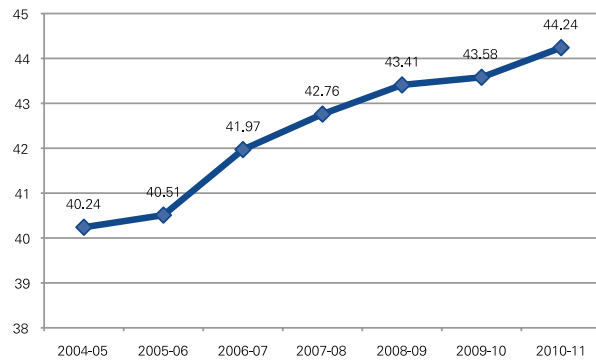


Ganesh Kumar Nigam

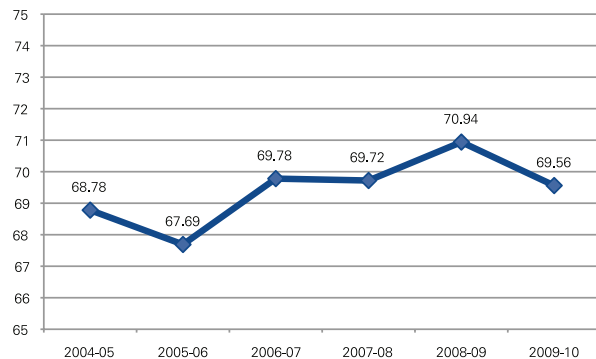
Availability of female teachers

Percentage of female teachers

- Maharashtra has 5,13,594 teachers in its Elementary Schools in year 2010-11 of which 2,37,087 (44.24%) are female teachers. Percentage of female teacher increased from 40.24% in year 2004-05 to 44.24% in year 2010-11. Availability of female teachers differs across districts.
- About 30% schools do not have any female teacher and over the period, despite of increasing number of female teachers across the state, situation has not improved.

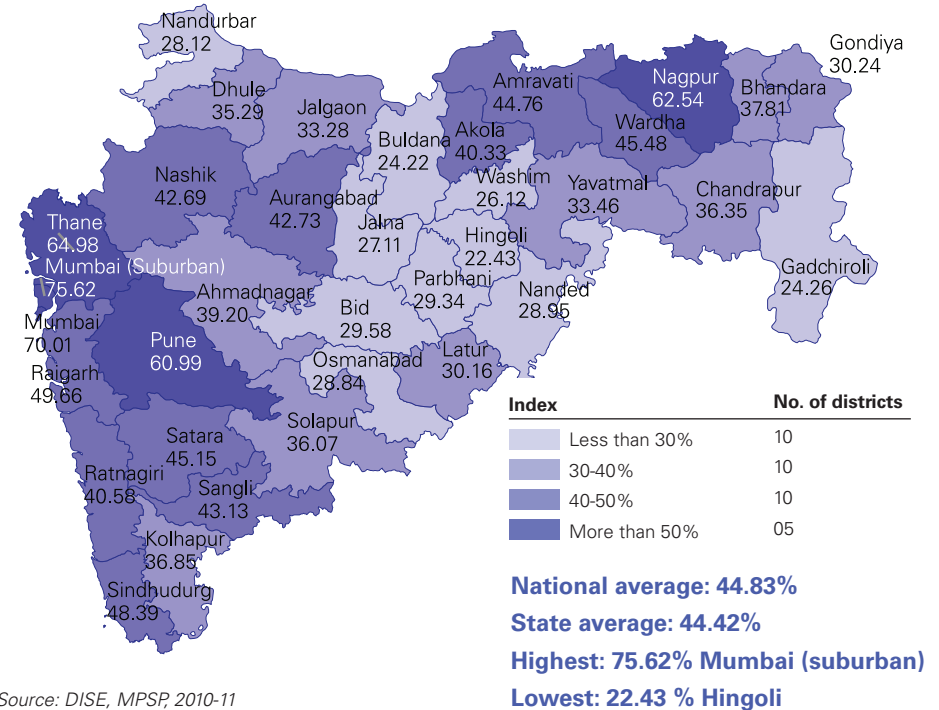


Percentage of schools with female teacher



Source: DISE, MPSP, 2004-05 to 2010-11

Percentage of female teachers by districts, Maharashtra, 2010-11

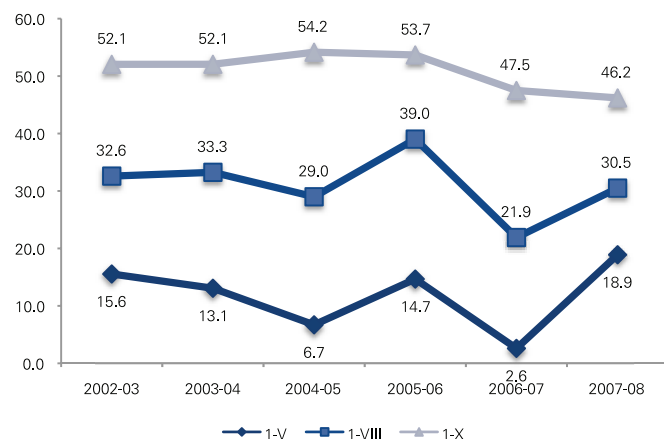


Source: DISE, MPSP, 2010-11

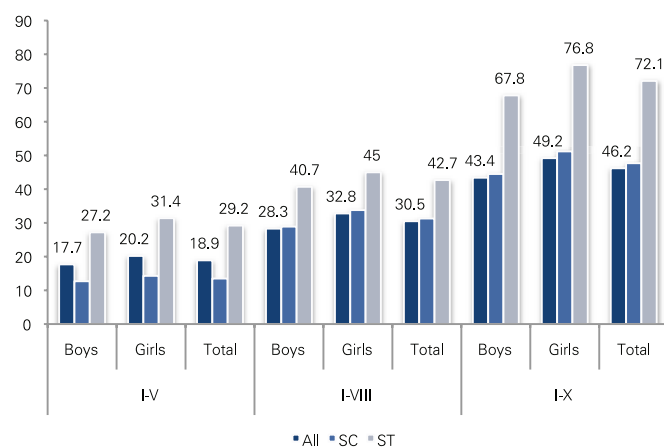
- Share of female teachers to total teacher varies across districts.
- Five districts- Mumbai, Mumbai (sub urban), Thane, Pune and Nagpur have share of female teachers more than 60% while three districts (Hingoli, Buldana and Gadchiroli) have less than 25% to the total number of teachers.

Dropout rate³²

Trends in dropout rate at Primary, Upper Primary and Secondary level



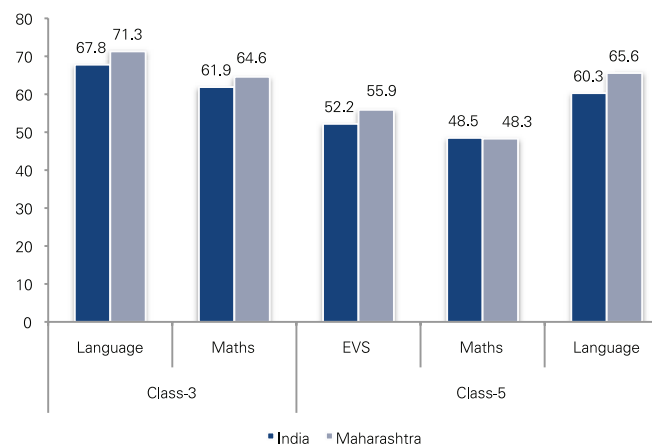
Dropout rate by sex and level and social groups, 2007-08



Source : Annual reports ,MHRD, Govt. of India

- Dropout rate shows a slightly decreasing trend at Upper Primary and Secondary level but vary at the Primary level.
- Dropout rate at Secondary level is very high compared to Primary and Upper Primary level.
- Dropout rate of girls is slightly higher compared to boys.
- Dropout rate of ST children is very high compared to SC and all children.

Comparison of learning achievement levels, Class-3 and 5, NCERT, 2009

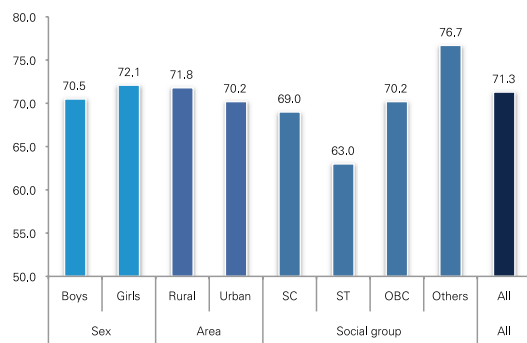


Source: Mid term Study under SSA, Learning achievement of class 5 and 3 children, NCERT, 2009

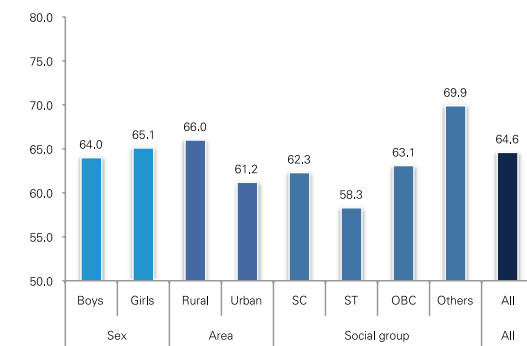
- Learning achievement levels of Maharashtra are slightly higher than the national average.
- Learning achievement levels of class-5 are lower than class-3.
- Learning achievement levels of Mathematics is lower than language and Environmental Science (EVS).

Learning achievements, Class-3, NCERT, 2009 (mean %)

Language



Mathematics

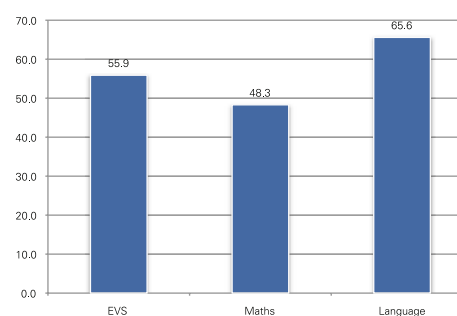


Source: Mid term Study under SSA, Learning achievement of class 5 and 3 children, NCERT, 2009

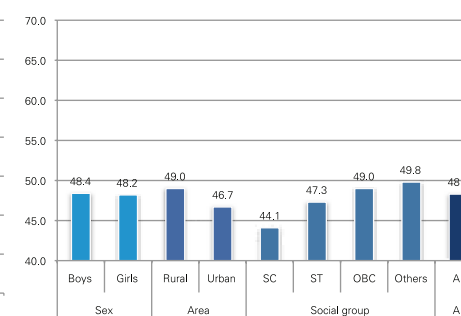
- Learning achievements among ST and other social groups children vary significantly.
- Learning achievements among rural children and girls is slightly better than urban children and boys.
- 19% children scored less than 40% marks in Mathematics and 11% children the same in Languages.
- Performance is slightly better in Languages compared to Mathematics.
- Socio economic status, availability of teaching learning material, educational qualifications of the teacher positively influenced learning achievements among children.

Learning achievements, Class-5, NCERT, 2009 (mean %)

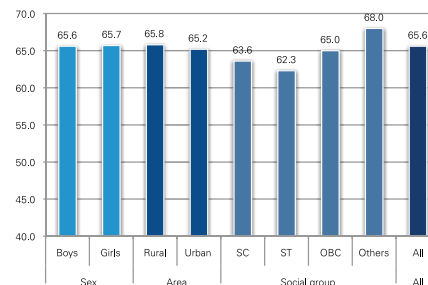
Mean percentage by subject



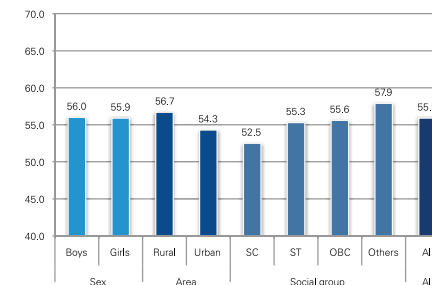
Mean percentage in Mathematics



Mean percentage in Language



Mean percentage in EVS

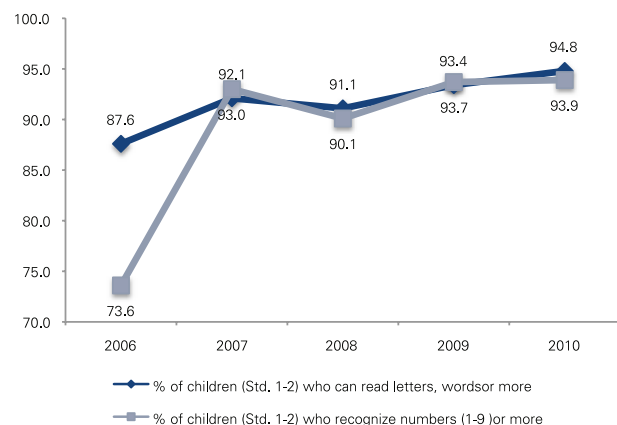


Source: Mid term Study under SSA, Learning achievement of class 5 and 3 children, NCERT, 2009

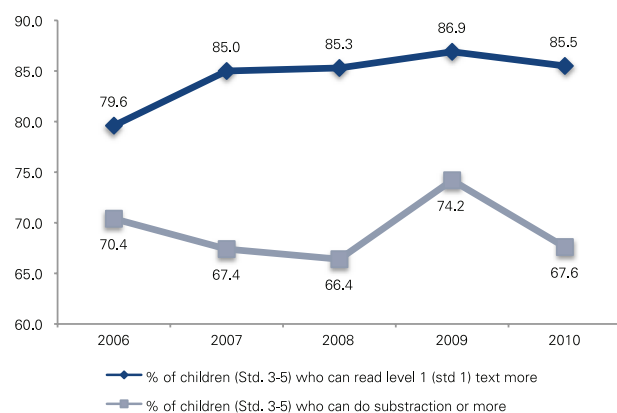
- In all three subjects, performance of children from “other” social group is highest, followed by children from OBC.
- Performance of rural children is slightly better than urban children.
- No significant difference is observed between the performance of boys and girls.
- Performance in Mathematics is lower than Languages and EVS.
- Socio economic status, teacher professionalism, inspection of school and community participation positively influenced learning achievements among children.

Trends in learning achievements, ASER

Std 1-2



Std 3-5

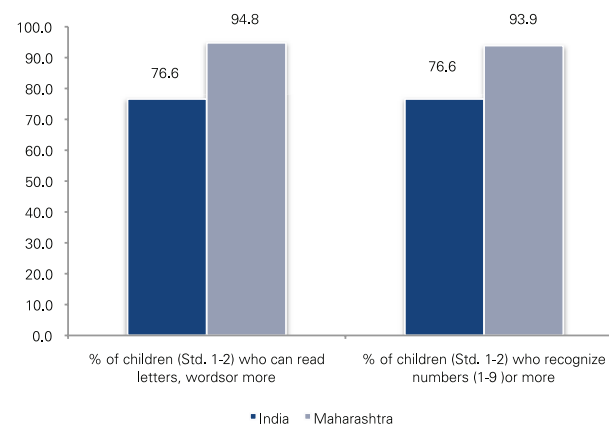


Source: ASER 2006 to 2010, New Delhi

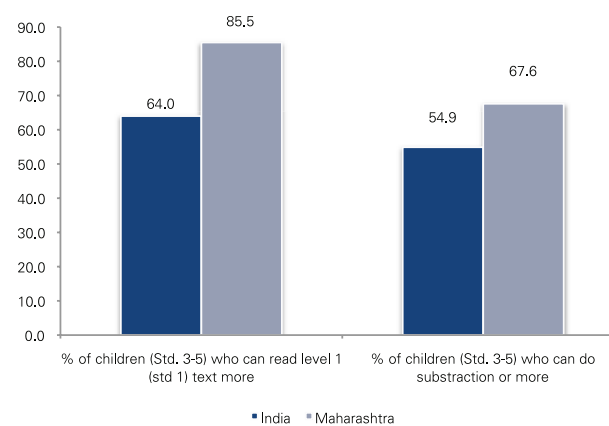
- Performance of Std 1-2 children has slightly improved over the compared period.
- Performance of Std 3-5 in Languages is steady but varies in Mathematics.

Learning achievements, ASER, 2010

Std 1-2



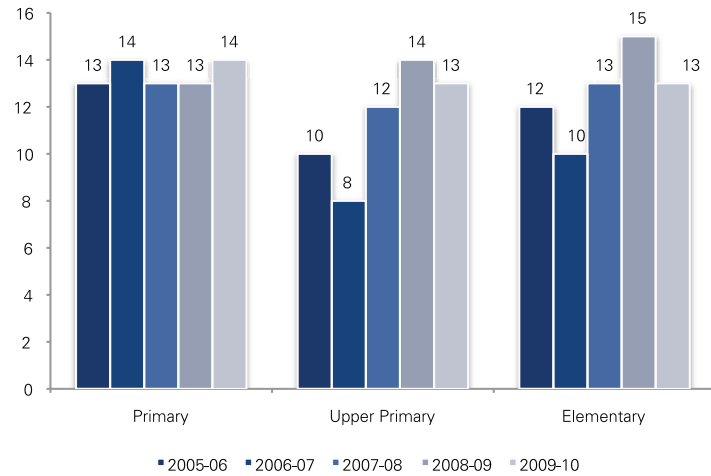
Std 3-5



Source: ASER 2010, New Delhi

- Performance of Maharashtra is better than the national average
- Performance of Mathematics is poor than Languages, especially for children between Standard 3-5

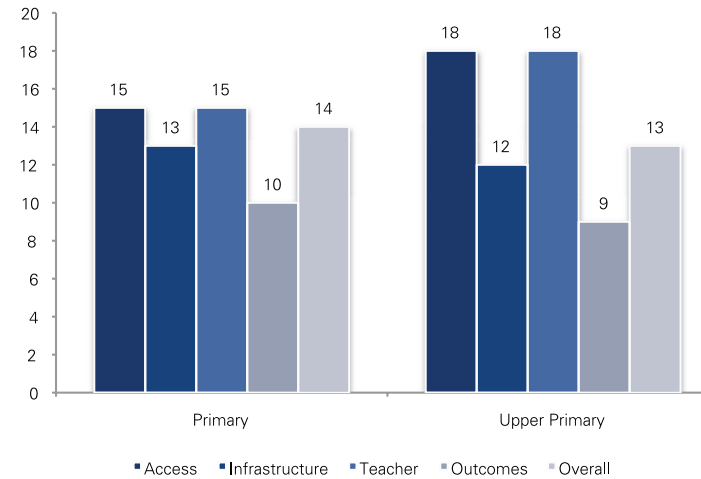
Education Development Index (EDI)³³- Trends in Maharashtra's rank in India



Maharashtra's rank in India at Primary ,Upper Primary and Elementary levels varies over the compared period

Source: Flash Statistics, NUEPA, 2009-10

Education Development Index (EDI)-Maharashtra's rank in India, 2009-10

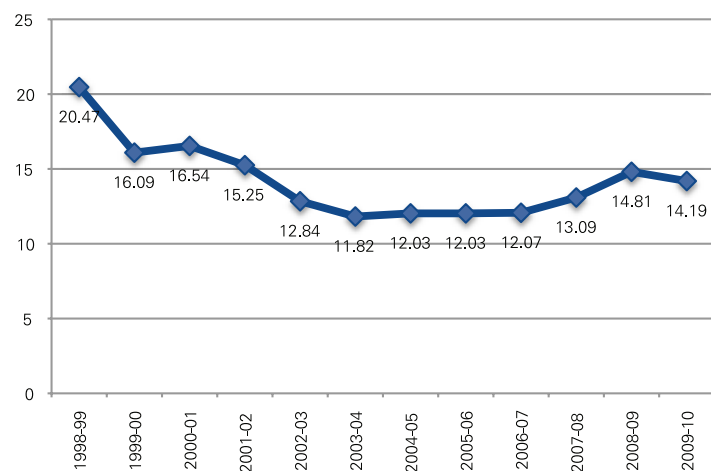


Maharashtra's rank is low in access and teacher related indicators as compared to outcome and infrastructure

Source: Flash Statistics, NUEPA, 2009-10

Expenditure on elementary education

- Per student average annual expenditure by household on Primary education is Rs.1,696, on Upper Primary is Rs. 2,400 and on Secondary and Higher Secondary is Rs.4,157. This expenditure includes tuition fees, private coaching, uniform, stationary and transport. (Report number 532, 64th round survey, NSSO, 2007-08).
- The state Government made provisions of Rs. 26,443.63 crore for school education (Rs.13,670.16 crore for Elementary education and Rs. 12,773.47 crore on Secondary education) for year 2011-12.
- Percentage of expenditure on school education to the total budget of Government of Maharashtra was 20.47% in year 1998-99. It reduced sharply and reached 11.82% in year 2004-05 and thereafter increased and reached 14.19% in year 2009-10.



- While expenditure under Sarva Shiksha Abhiyan (SSA) was Rs. 604.58 crore in year 2005-06, it increased to Rs. 1378.72 crore during year 2010-11.
- Expenditure during 2010-11 was 66.37% of total approved outlay (Rs. 2077.44 crore) under SSA.

Source : Calculated from Civil budget estimates of various years, Government of India

