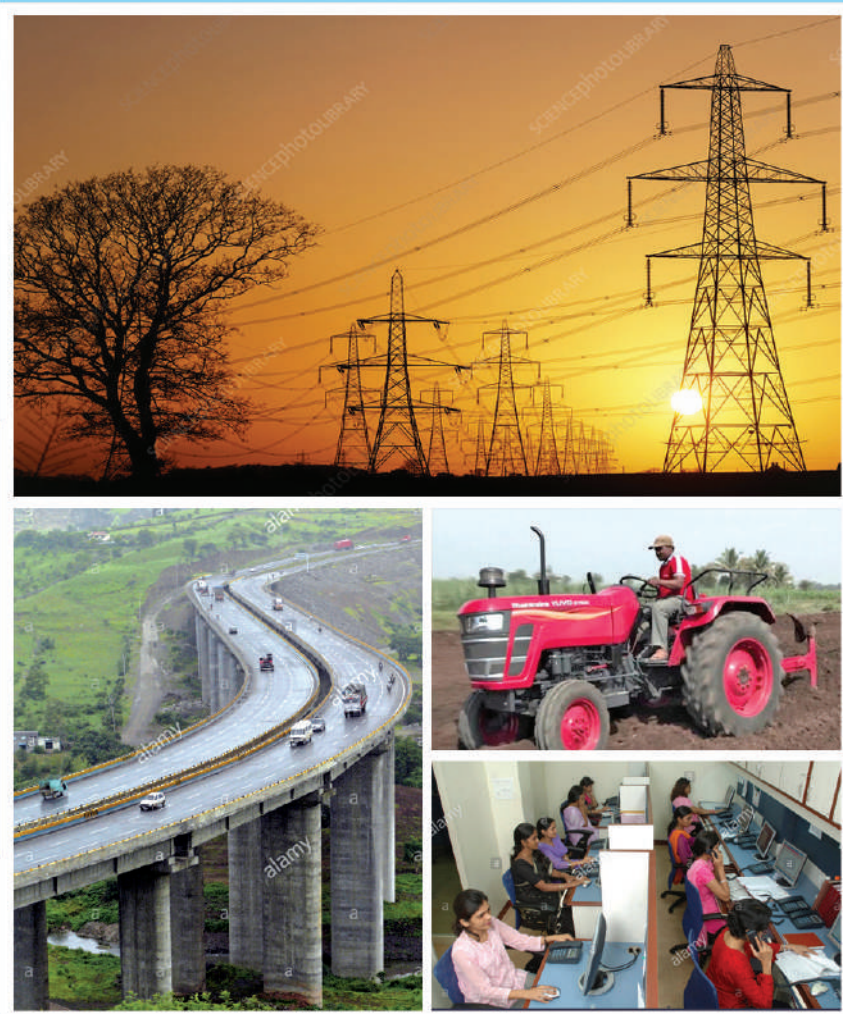




**ESTIMATES OF  
GROSS FIXED CAPITAL FORMATION  
(PUBLIC SECTOR)  
1999-00 TO 2003-04  
(Base Year 1999-2000)  
MAHARASHTRA**



**Directorate of Economics & Statistics,**  
Government of Maharashtra, Mumbai.

Government of Maharashtra

Estimates of  
Gross Fixed Capital Formation

( Public Sector – 1999-00 to 2003-04)

[ Base Year 1999-2000 ]

Directorate of Economics & Statistics,  
Mumbai

## P R E F A C E

Capital Formation is an indicator to measure the productive potential of the economy. Capital formation is that part of total expenditure which is not consumed but added to the fixed assets and stocks.

The Directorate of Economics and Statistics compiles the estimates of Gross Fixed Capital Formation (GFCF) in public sector in the State at current prices for the specified base year series.

This publication consists of the estimates of GFCF of Public Sector at current prices for the year 1999-2000 to 2003-04 for the Base Year 1999-00 series. These estimates are compiled in accordance with the guidance provided by the National Statistical Office (erstwhile Central Statistics Office), Government of India. The estimates of GFCF for public sector are prepared and presented in this publication by type of assets, by type of institution & by type of industry of use.

I gratefully acknowledge the co-operation given by various government departments, Central and State Departmental Enterprises (DES), Central & State Non-Departmental Enterprises (NDEs) and National Statistical Office (NSO).

Suggestions for improvement are most welcome.

MUMBAI

April, 2021.

*(R. R. SHINGE)*

*Director  
Directorate of Economics & Statistics,  
Planning Department,  
Government of Maharashtra,  
MUMBAI*

## **Team associated with the preparation of the report**

|                             |                        |
|-----------------------------|------------------------|
| 1. Shri.P.H.Bhagoorkar      | Joint Director         |
| 2. Shri.N.K.Firake          | Deputy Director        |
| 3. Shri.N.M.Prabhudesai     | Research Officer       |
| 4. Shri.H.R.Bhoye           | Research Officer (I/c) |
| 5. Shri.Y.J.Gangikar        | Research Assistant     |
| 6. Shri.Babasaheb Dahiphale | Research Assistant     |

## CONTENTS

|             |            | Particulars  | Page No. |
|-------------|------------|--|----------|
| <b>Part</b> | <b>I</b>   | Introduction   | 1-2      |
| <b>Part</b> | <b>II</b>  | Graphs   | 4-6      |
| <b>Part</b> | <b>III</b> | <b>Public Sector : Data tables</b>   |          |
| Table - 1   |            | Gross Fixed Capital Formation of Public Sector in Maharashtra by Institutional Sector  | 8        |
| Table - 2   |            | Gross Fixed Capital Formation of Public Sector in Maharashtra by Type of Assets  | 8        |
| Table - 3   |            | Gross Fixed Capital Formation of Public Sector in Maharashtra by Industry of Use   | 8        |
| Table - 4   |            | Gross Fixed Capital Formation of Public Sector in Maharashtra by Industry of Use & by Type of Assets for the years 1999-00 to 2003-04. | 9 to 11  |
| <b>Part</b> | <b>IV</b>  | <b>Annexures :</b>   |          |
| Annexure    | <b>I</b>   | Gross Fixed Capital Formation “Dept. Enterprises” by Industry of Use & by Type of Assets for the years 1999-00 to 2003-04.             | 13 to 15 |
| Annexure    | <b>II</b>  | Gross Fixed Capital Formation “Non-Dept. Enterprises” by Industry of Use & by Type of Assets for the years 1999-00 to 2003-04.         | 16 to 18 |
| Annexure    | <b>III</b> | Gross Fixed Capital Formation “Local Bodies” by Industry of Use & by Type of Assets for the years 1999-00 to 2003-04.                  | 19 to 20 |
| Annexure    | <b>IV</b>  | Gross Fixed Capital Formation from “Supra Regional Sector” for the years 1999-00 to 2003-04.   | 21       |

## **PART- I**

### **INTRODUCTION**

Capital Formation is an indicator to measure the productive potential of the economy. Capital formation is that part of total expenditure which is not consumed but added to the fixed assets and stocks.

#### ***Concepts and Definitions :***

Gross Capital Formation is measured by the total value of the Gross Fixed Capital Formation (GFCF), change in inventory and acquisitions less disposals of valuables. The estimates of capital formation can be prepared by following three approaches.

- i) Production or commodity flow approach
- ii) Savings and flow of funds approach
- iii) Expenditure approach

At National level, estimates are prepared by following all the above approaches. As the Production or commodity flow approach and Savings & flow of funds approach are not feasible at State level, expenditure approach is used to prepare estimates of GFCF at State level. Similarly, data of change in stocks are not available at State level due to open boundaries of the States. Hence, at the State level estimates of Gross Fixed Capital Formation prepared as per recommendations of Regional Accounts Committee (RAC).

Gross Fixed Capital Formation refers to aggregate of gross addition to the fixed assets in stocks during a period of account. Fixed assets comprises of buildings, roads & bridges, other construction, machinery equipments and transport equipments.

#### **Coverage :**

In this report the estimates of Gross Fixed Capital Formation in the public sector from 1999-00 to 2003-04 are given.

Public Sector consists of Departmental Commercial Undertakings (DCU), Non-Departmental Commercial Undertakings (NDCU) and administrative departments of Central Government, State Government & Local Bodies.

Supra-Regional Sector consists of Railways, Communications and Banking & Insurance.

#### **Methodology:**

Estimates of Gross Fixed Capital Formation have been prepared as per the guidelines for GFCF estimate at State level provided by National Statistical Office from time to time.

**Public Sector :** Estimates of Gross Fixed Capital Formation for Public Sector are prepared by type of assets, by type of institution and by industry of use.

- a. Estimates of Gross Fixed Capital Formation have been prepared for following **Types of Assets**
  - Buildings
  - Roads & Bridges
  - Other Constructions
  - Plant & Machinery
  - Transport Equipments

**b.** Estimates of Gross Fixed Capital Formation **by type of Institution** are in respect of Government Administrative Departments, Departmental Enterprises and Non-Departmental Enterprises of Central and State Government and Local Bodies in the State. These estimates are prepared by compiling data available in the State budget, balance sheet of Public Sector Enterprises/ Companies and from the annual statement of accounts of Local Bodies in the State.

**c.** The economy has been divided into following sectors for estimation of Gross Fixed Capital Formation **by industry of use**.

- (i) Agriculture including Livestock
- (ii) Forestry and Logging
- (iii) Fishing
- (iv) Mining and Quarrying
- (v) Manufacturing
- (vi) Electricity, Gas and Water Supply
- (vii) Construction
- (viii) Trade, Hotels and Restaurants
- (ix) Transport, Storage and Communication
  - i) Railways
  - ii) Transport by other means
  - iii) Storage
  - iv) Communication
- (x) Banking and Insurance
- (xi) Real estate, ownership of dwelling & business services
- (xii) Public Administration
- (xiii) Other Services.

-----\*\*\*-----

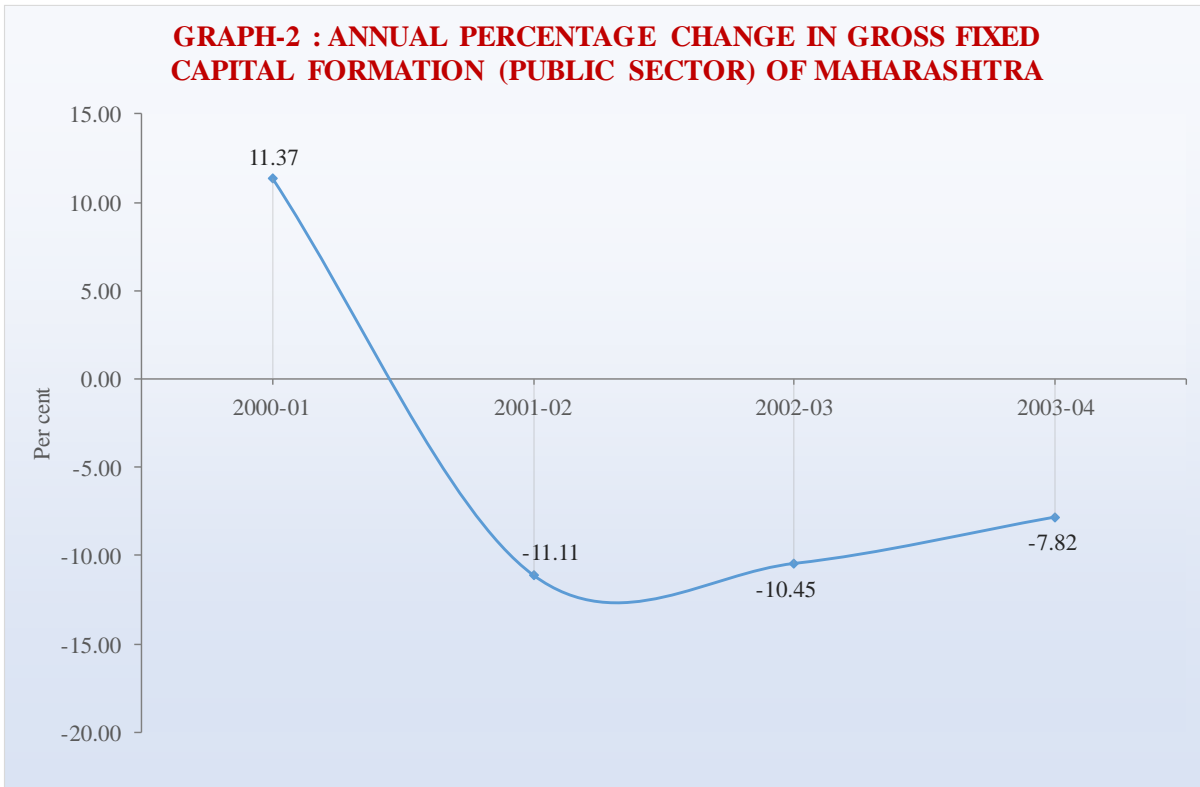
# **PART – II**

# **Graphs**

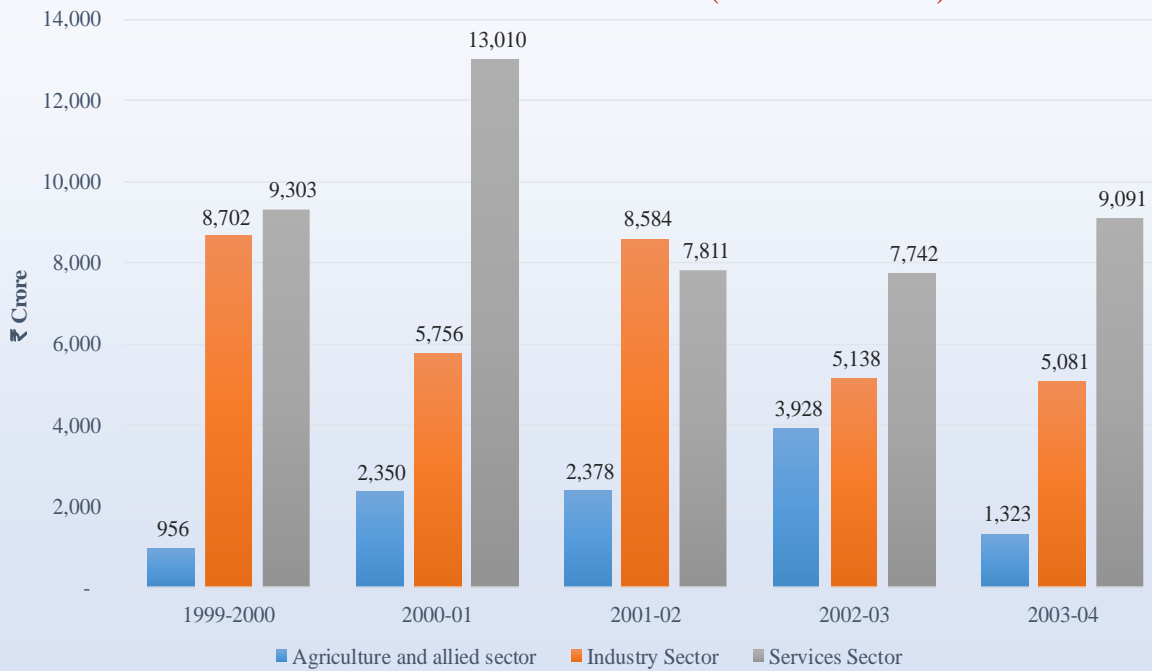
**GRAPH-1 : GROSS FIXED CAPITAL FORMATION OF MAHARASHTRA  
(PUBLIC SECTOR)**



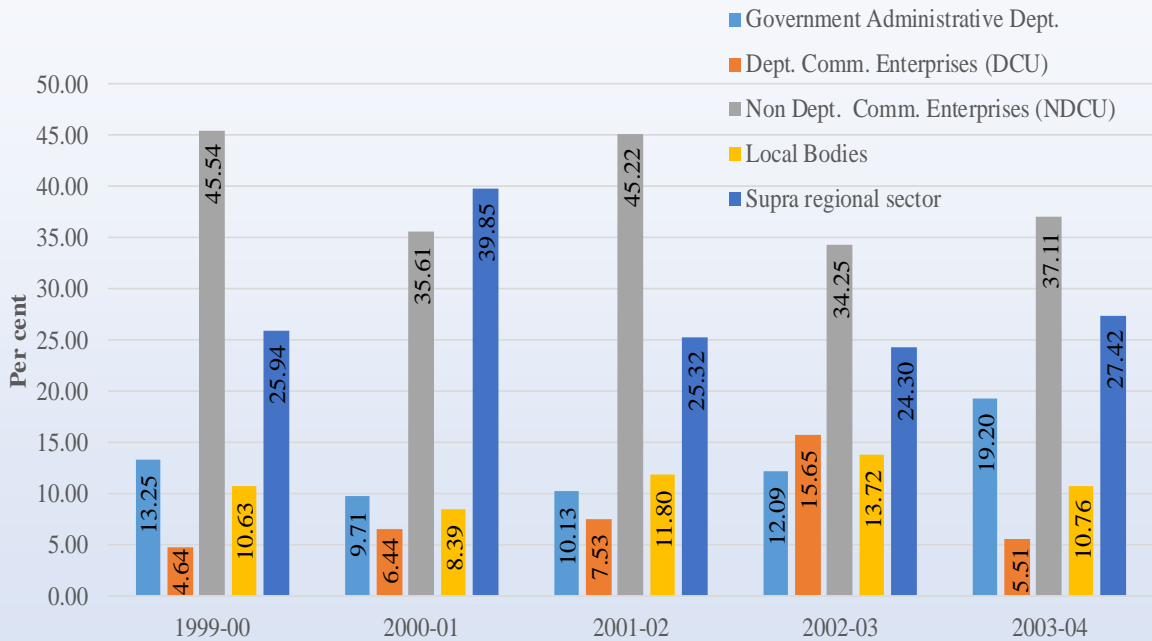
**GRAPH-2 : ANNUAL PERCENTAGE CHANGE IN GROSS FIXED  
CAPITAL FORMATION (PUBLIC SECTOR) OF MAHARASHTRA**



**GRAPH-3 : GROSS FIXED CAPITAL FORMATION OF MAHARASHTRA BY BROAD SECTORS (PUBLIC SECTOR)**



**GRAPH-4 : PERCENTAGE DISTRIBUTION OF GROSS FIXED CAPITAL FORMATION (PUBLIC SECTOR) IN MAHARASHTRA BY INSTITUTION**



**GRAPH-5 : GROSS FIXED CAPITAL FORMATION OF MAHARASHTRA  
BY TYPE OF ASSETS (PUBLIC SECTOR )**



# **PART - III**

## **GFCF :-**

Table 1: Institutional Sector

Table 2: Type of Assets

Table 3: Industry of Use

Table 4: Industry of Use & Type of Assets

**GROSS FIXED CAPITAL FORMATION OF PUBLIC SECTOR IN MAHARASHTRA**

**TABLE - 1**

*BY INSTITUTION*

(At Current Prices)

(₹ Crore)

| Year             | Government Administrative Departments | Dept. Comm. Enterprises (D C U) | Non Dept. Comm. Enterprises (N D C U) | Local Bodies | Supra-Regional Sector | Total GFCF    |
|------------------|---------------------------------------|---------------------------------|---------------------------------------|--------------|-----------------------|---------------|
| (1)              | (2)                                   | (3)                             | (4)                                   | (5)          | (6)                   | (7)           |
| <b>1999-2000</b> | 2,512                                 | 880                             | 8,636                                 | 2,016        | 4,918                 | <b>18,962</b> |
| <b>2000-01</b>   | 2,051                                 | 1,360                           | 7,519                                 | 1,771        | 8,415                 | <b>21,117</b> |
| <b>2001-02</b>   | 1,902                                 | 1,414                           | 8,489                                 | 2,214        | 4,752                 | <b>18,770</b> |
| <b>2002-03</b>   | 2,032                                 | 2,630                           | 5,757                                 | 2,306        | 4,084                 | <b>16,809</b> |
| <b>2003-04</b>   | 2,976                                 | 854                             | 5,750                                 | 1,667        | 4,248                 | <b>15,494</b> |

Note : Figures may not add up due to rounding.

**TABLE - 2**

*BY TYPE OF ASSETS*

(At Current Prices)

(₹ Crore)

| Y E A R          | Buildings | Roads & Bridges | Other Constructions | Plant & Machinery | Transport Equipments | Supra Regional Sector | Total GFCF    |
|------------------|-----------|-----------------|---------------------|-------------------|----------------------|-----------------------|---------------|
| (1)              | (2)       | (3)             | (4)                 | (5)               | (6)                  | (7)                   | (8)           |
| <b>1999-2000</b> | 2,279     | 1,457           | 6,838               | 2,757             | 712                  | 4,918                 | <b>18,962</b> |
| <b>2000-01</b>   | 1,640     | 1,181           | 7,803               | 1,458             | 619                  | 8,415                 | <b>21,117</b> |
| <b>2001-02</b>   | 1,236     | 1,185           | 7,441               | 3,873             | 283                  | 4,752                 | <b>18,770</b> |
| <b>2002-03</b>   | 1,407     | 1,068           | 7,918               | 2,152             | 179                  | 4,084                 | <b>16,809</b> |
| <b>2003-04</b>   | 1,323     | 1,449           | 5,568               | 2,488             | 418                  | 4,248                 | <b>15,494</b> |

Note : Figures may not add up due to rounding.

**TABLE - 3**

*BY INDUSTRY OF USE*

(At Current Prices)

(₹ Crore)

| Sr. No.      | INDUSTRY                           | YEAR          |               |               |               |               |
|--------------|------------------------------------|---------------|---------------|---------------|---------------|---------------|
|              |                                    | 1999-2000     | 2000-01       | 2001-02       | 2002-03       | 2003-04       |
| (1)          | (2)                                | (3)           | (4)           | (5)           | (6)           | (7)           |
| 1            | Agriculture including livestock    | 869           | 2,276         | 2,311         | 3,871         | 1,260         |
| 2            | Forestry and Logging               | 82            | 52            | 55            | 64            | 62            |
| 3            | Fishing                            | 5             | 22            | 12            | (-7)          | 1             |
| 4            | Mining and Quarrying               | 236           | 190           | 207           | 141           | 111           |
| 5            | Manufacturing                      | 1,356         | 455           | 2,315         | 201           | 243           |
| 6            | Construction                       | 6,310         | 4,397         | 3,987         | 2,217         | 1,694         |
| 7            | Electricity, Gas & Water Supply    | 800           | 714           | 2,075         | 2,579         | 3,033         |
| 8            | Transport, Storage & Communication | 3,717         | 7,785         | 3,584         | 2,571         | 2,228         |
| 9            | Trade, Hotels & Restaurants        | 331           | 140           | 146           | 69            | 55            |
| 10           | Banking and Insurance              | 592           | 549           | 386           | 558           | 969           |
| 11           | Public Administration              | 3,706         | 3,660         | 2,670         | 3,364         | 5,346         |
| 12           | Other Services                     | 957           | 876           | 1,025         | 1,180         | 493           |
| <b>Total</b> |                                    | <b>18,962</b> | <b>21,117</b> | <b>18,770</b> | <b>16,809</b> | <b>15,494</b> |

Note : Figures may not add up due to rounding.

Table- 4

**GROSS FIXED CAPITAL FORMATION OF PUBLIC SECTOR IN MAHARASHTRA  
BY INDUSTRY OF USE AND BY TYPE OF ASSETS**

**YEAR : 1999-2000**

(At Current Prices)

(₹ Crore)

| Sr. No. | INDUSTRY   | Buildings    | Roads & Bridges | Other Constructions | Plant & Machinery | Transport Equipments | Supra Regional Sector | Total GFCF    |
|---------|--|--------------|-----------------|---------------------|-------------------|----------------------|-----------------------|---------------|
| (1)     | (2)  | (3)          | (4)             | (5)                 | (6)               | (7)                  | (8)                   | (9)           |
| 1       | Agriculture including livestock                              | 5            | 0               | 834                 | 27                | 2                    | 0                     | 869           |
| 2       | Forestry and Logging   | 1            | 0               | 80                  | 0                 | 0                    | 0                     | 82            |
| 3       | Fishing  | 0            | 0               | 0                   | 2                 | 2                    | 0                     | 5             |
| 4       | Mining and Quarrying   | 29           | 0               | -21                 | 6                 | 223                  | 0                     | 236           |
| 5       | Manufacturing  | 64           | 0               | 32                  | 1,243             | 16                   | 0                     | 1,356         |
| 6       | Construction   | 1,092        | 929             | 4,210               | 78                | 2                    | 0                     | 6,310         |
| 7       | Electricity, Gas & Water Supply                              | 97           | 1               | 256                 | 440               | 6                    | 0                     | 800           |
| 8       | Transport, Railway, Water Transport, Storage & Communication | 249          | 0               | 56                  | 85                | 382                  | 2,944                 | 3,717         |
| 9       | Trade, Hotel & Restaurant                                    | 63           | 0               | 6                   | 226               | 36                   | 0                     | 331           |
| 10      | Banking and Insurance  | 1            | 0               | 0                   | 51                | 0                    | 540                   | 592           |
| 11      | Public Administration  | 332          | 524             | 892                 | 494               | 30                   | 1,434                 | 3,706         |
| 12      | Other Services   | 346          | 3               | 492                 | 104               | 13                   | 0                     | 957           |
|         | <b>Total</b>   | <b>2,279</b> | <b>1,457</b>    | <b>6,838</b>        | <b>2,757</b>      | <b>712</b>           | <b>4,918</b>          | <b>18,962</b> |

Note : Figures may not add up due to rounding.

Table- 4(Contd.)

**GROSS FIXED CAPITAL FORMATION OF PUBLIC SECTOR IN MAHARASHTRA  
BY INDUSTRY OF USE AND BY TYPE OF ASSETS**

**YEAR : 2000-01**

(At Current Prices)

(₹ Crore)

| Sr. No. | INDUSTRY   | Buildings    | Roads & Bridges | Other Constructions | Plant & Machinery | Transport Equipments | Supra Regional Sector | Total GFCF    |
|---------|--|--------------|-----------------|---------------------|-------------------|----------------------|-----------------------|---------------|
| (1)     | (2)  | (3)          | (4)             | (5)                 | (6)               | (7)                  | (8)                   | (9)           |
| 1       | Agriculture including livestock                              | 14           | 0               | 2,231               | 28                | 3                    | 0                     | 2,276         |
| 2       | Forestry and Logging   | 0            | 0               | 52                  | 0                 | 0                    | 0                     | 52            |
| 3       | Fishing  | 0            | 0               | 1                   | 11                | 10                   | 0                     | 22            |
| 4       | Mining and Quarrying   | 40           | 0               | 69                  | 81                | 1                    | 0                     | 190           |
| 5       | Manufacturing  | 54           | 0               | 17                  | 373               | 11                   | 0                     | 455           |
| 6       | Construction   | 596          | 0               | 3,731               | 61                | 9                    | 0                     | 4,397         |
| 7       | Electricity, Gas & Water Supply                              | 220          | 3               | 286                 | 201               | 3                    | 0                     | 714           |
| 8       | Transport, Railway, Water Transport, Storage & Communication | 45           | 0               | 321                 | 94                | 456                  | 6,868                 | 7,785         |
| 9       | Trade, Hotel & Restaurant                                    | 48           | 0               | 12                  | 78                | 2                    | 0                     | 140           |
| 10      | Banking and Insurance  | 1            | 0               | 0                   | 51                | 0                    | 497                   | 549           |
| 11      | Public Administration  | 296          | 1,165           | 669                 | 362               | 118                  | 1,050                 | 3,660         |
| 12      | Other Services   | 327          | 13              | 415                 | 117               | 5                    | 0                     | 876           |
|         | <b>Total</b>   | <b>1,640</b> | <b>1,181</b>    | <b>7,803</b>        | <b>1,458</b>      | <b>619</b>           | <b>8,415</b>          | <b>21,117</b> |

Note : Figures may not add up due to rounding.

Table- 4(Contd.)

**GROSS FIXED CAPITAL FORMATION OF PUBLIC SECTOR IN MAHARASHTRA  
BY INDUSTRY OF USE AND BY TYPE OF ASSETS**

**YEAR : 2001-02**

(At Current Prices)

(₹ Crore)

| Sr. No. | INDUSTRY   | Buildings    | Roads & Bridges | Other Constructions | Plant & Machinery | Transport Equipments | Supra Regional Sector | Total GFCF    |
|---------|--|--------------|-----------------|---------------------|-------------------|----------------------|-----------------------|---------------|
| (1)     | (2)  | (3)          | (4)             | (5)                 | (6)               | (7)                  | (8)                   | (9)           |
| 1       | Agriculture including livestock                              | 9            | 0               | 2,279               | 23                | 0                    | 0                     | 2,311         |
| 2       | Forestry and Logging   | 0            | 0               | 54                  | 0                 | 0                    | 0                     | 55            |
| 3       | Fishing  | 1            | 0               | 8                   | 2                 | 1                    | 0                     | 12            |
| 4       | Mining and Quarrying   | 30           | 0               | 46                  | 131               | 0                    | 0                     | 207           |
| 5       | Manufacturing  | 45           | 0               | 12                  | 2,249             | 8                    | 0                     | 2,315         |
| 6       | Construction   | 153          | 908             | 2,858               | 61                | 7                    | 0                     | 3,987         |
| 7       | Electricity, Gas & Water Supply                              | 314          | 2               | 971                 | 782               | 5                    | 0                     | 2,075         |
| 8       | Transport, Railway, Water Transport, Storage & Communication | 41           | 0               | 44                  | 91                | 217                  | 3,190                 | 3,584         |
| 9       | Trade, Hotel & Restaurant                                    | 69           | 0               | 2                   | 73                | 1                    | 0                     | 146           |
| 10      | Banking and Insurance  | 1            | 0               | 0                   | 51                | 0                    | 334                   | 386           |
| 11      | Public Administration  | 150          | 188             | 728                 | 352               | 25                   | 1,228                 | 2,670         |
| 12      | Other Services   | 424          | 87              | 438                 | 59                | 18                   | 0                     | 1,025         |
|         | <b>Total</b>   | <b>1,236</b> | <b>1,185</b>    | <b>7,441</b>        | <b>3,873</b>      | <b>283</b>           | <b>4,752</b>          | <b>18,770</b> |

Note : Figures may not add up due to rounding.

Table- 4(Contd.)

**GROSS FIXED CAPITAL FORMATION OF PUBLIC SECTOR IN MAHARASHTRA  
BY INDUSTRY OF USE AND BY TYPE OF ASSETS**

**YEAR : 2002-03**

(At Current Prices)

(₹ Crore)

| Sr. No. | INDUSTRY   | Buildings    | Roads & Bridges | Other Constructions | Plant & Machinery | Transport Equipments | Supra Regional Sector | Total GFCF    |
|---------|--|--------------|-----------------|---------------------|-------------------|----------------------|-----------------------|---------------|
| (1)     | (2)  | (3)          | (4)             | (5)                 | (6)               | (7)                  | (8)                   | (9)           |
| 1       | Agriculture including livestock                              | 16           | 0               | 3,819               | 36                | 0                    | 0                     | 3,871         |
| 2       | Forestry and Logging   | 0            | 0               | 63                  | 0                 | 0                    | 0                     | 64            |
| 3       | Fishing  | 0            | 0               | 0                   | (-)7              | 0                    | 0                     | (-)7          |
| 4       | Mining and Quarrying   | 30           | 0               | 42                  | 68                | 1                    | 0                     | 141           |
| 5       | Manufacturing  | 20           | 0               | 8                   | 168               | 5                    | 0                     | 201           |
| 6       | Construction   | 284          | 271             | 1,602               | 51                | 8                    | 0                     | 2,217         |
| 7       | Electricity, Gas & Water Supply                              | 457          | 2               | 1,019               | 1,095             | 6                    | 0                     | 2,579         |
| 8       | Transport, Railway, Water Transport, Storage & Communication | 83           | 0               | 53                  | 108               | 112                  | 2,215                 | 2,571         |
| 9       | Trade, Hotel & Restaurant                                    | 20           | 0               | 1                   | 47                | 2                    | 0                     | 69            |
| 10      | Banking and Insurance  | 1            | 0               | 0                   | 51                | 0                    | 507                   | 558           |
| 11      | Public Administration  | 83           | 704             | 720                 | 469               | 27                   | 1,362                 | 3,364         |
| 12      | Other Services   | 414          | 90              | 591                 | 66                | 19                   | 0                     | 1,180         |
|         | <b>Total</b>   | <b>1,407</b> | <b>1,068</b>    | <b>7,918</b>        | <b>2,152</b>      | <b>179</b>           | <b>4,084</b>          | <b>16,809</b> |

Note : Figures may not add up due to rounding.

**Table- 4(Contd.)**  
**GROSS FIXED CAPITAL FORMATION OF PUBLIC SECTOR IN MAHARASHTRA**  
**BY INDUSTRY OF USE AND BY TYPE OF ASSETS**

**YEAR : 2003-04**

(At Current Prices)

(₹ Crore)

| Sr. No. | INDUSTRY   | Buildings    | Roads & Bridges | Other Constructions | Plant & Machinery | Transport Equipments | Supra Regional Sector | Total GFCF    |
|---------|--|--------------|-----------------|---------------------|-------------------|----------------------|-----------------------|---------------|
| (1)     | (2)  | (3)          | (4)             | (5)                 | (6)               | (7)                  | (8)                   | (9)           |
| 1       | Agriculture including livestock                              | 1            | 0               | 1,250               | 8                 | 0                    | 0                     | <b>1,260</b>  |
| 2       | Forestry and Logging   | 0            | 0               | 61                  | 0                 | 1                    | 0                     | <b>62</b>     |
| 3       | Fishing  | 0            | 0               | 0                   | (-)2              | 3                    | 0                     | <b>1</b>      |
| 4       | Mining and Quarrying   | 30           | 0               | 74                  | 6                 | 1                    | 0                     | <b>111</b>    |
| 5       | Manufacturing  | 26           | 0               | 12                  | 180               | 25                   | 0                     | <b>242</b>    |
| 6       | Construction   | 309          | 0               | 1,327               | 57                | 0                    | 0                     | <b>1,694</b>  |
| 7       | Electricity, Gas & Water Supply                              | 482          | 7               | 919                 | 1,619             | 5                    | 0                     | <b>3,033</b>  |
| 8       | Transport, Railway, Water Transport, Storage & Communication | 41           | 1               | 31                  | 40                | 359                  | 1,756                 | <b>2,228</b>  |
| 9       | Trade, Hotel & Restaurant                                    | 17           | 0               | 5                   | 32                | 1                    | 0                     | <b>55</b>     |
| 10      | Banking and Insurance  | 1            | 0               | 0                   | 51                | 0                    | 918                   | <b>969</b>    |
| 11      | Public Administration  | 497          | 1,436           | 1,444               | 374               | 23                   | 1,573                 | <b>5,346</b>  |
| 12      | Other Services   | -83          | 5               | 445                 | 117               | 9                    | 0                     | <b>493</b>    |
|         | <b>Total</b>   | <b>1,321</b> | <b>1,449</b>    | <b>5,568</b>        | <b>2,482</b>      | <b>427</b>           | <b>4,248</b>          | <b>15,494</b> |

Note : Figures may not add up due to rounding.

# **PART - IV**

## **GFCF :-**

Anex.I - Dept.Enterprises

Anex.II - Non -Dept.Enterprises

Anex.III - Local Bodies

Anex.IV - Supra Regional Sector

**ANNEXURE - I**

**GROSS FIXED CAPITAL FORMATION OF "DEPARTMENTAL ENTERPRISES"  
BY INDUSTRY OF USE AND BY TYPE OF ASSETS**

**YEAR : 1999-2000**

(At Current Prices)

(₹ Crore)

| Sr. No.      | Industry                           | Buildings | Roads & Bridges | Other Constructions | Plant & Machinery | Transport  | Total GFCF |
|--------------|------------------------------------|-----------|-----------------|---------------------|-------------------|------------|------------|
| (1)          | (2)                                | (3)       | (4)             | (5)                 | (6)               | (7)        | (8)        |
| 1            | Agriculture including livestock    | 0         | 0               | 402                 | 21                | 2          | <b>426</b> |
| 2            | Forestry and Logging               | 0         | 0               | 31                  | 0                 | 0          | <b>31</b>  |
| 3            | Fishing                            | 0         | 0               | 0                   | 0                 | 0          | <b>0</b>   |
| 4            | Mining and Quarrying               | 0         | 0               | 0                   | 0                 | 0          | <b>0</b>   |
| 5            | Manufacturing                      | 0         | 0               | 0                   | 0                 | 0          | <b>0</b>   |
| 6            | Construction                       | 0         | 0               | 0                   | 0                 | 0          | <b>0</b>   |
| 7            | Electricity, Gas & Water Supply    | 2         | 0               | 1                   | 57                | 2          | <b>61</b>  |
| 8            | Transport, Storage & Communication | 85        | 0               | 29                  | 39                | 195        | <b>348</b> |
| 9            | Trade, Hotel & Restaurant          | 0         | 0               | 0                   | 0                 | 0          | <b>0</b>   |
| 10           | Banking and Insurance              | 0         | 0               | 0                   | 0                 | 0          | <b>0</b>   |
| 11           | Public Administration              | 0         | 0               | 0                   | 0                 | 0          | <b>0</b>   |
| 12           | Other Services                     | 10        | 0               | 1                   | 2                 | 0          | <b>13</b>  |
| <b>Total</b> |                                    | <b>97</b> | <b>0</b>        | <b>464</b>          | <b>119</b>        | <b>200</b> | <b>880</b> |

Note : Figures may not add up due to rounding.

**ANNEXURE - I (Contd.)**

**GROSS FIXED CAPITAL FORMATION OF "DEPARTMENTAL ENTERPRISES"  
BY INDUSTRY OF USE AND BY TYPE OF ASSETS**

**YEAR : 2000-01**

(At Current Prices)

(₹ Crore)

| Sr. No.      | Industry                           | Buildings | Roads & Bridges | Other Constructions | Plant & Machinery | Transport | Total GFCF   |
|--------------|------------------------------------|-----------|-----------------|---------------------|-------------------|-----------|--------------|
| (1)          | (2)                                | (3)       | (4)             | (5)                 | (6)               | (7)       | (8)          |
| 1            | Agriculture including livestock    | 8         | 0               | 932                 | 22                | 2         | <b>965</b>   |
| 2            | Forestry and Logging               | 0         | 0               | 19                  | 0                 | 0         | <b>19</b>    |
| 3            | Fishing                            | 0         | 0               | 0                   | 0                 | 0         | <b>0</b>     |
| 4            | Mining and Quarrying               | 0         | 0               | 0                   | 0                 | 0         | <b>0</b>     |
| 5            | Manufacturing                      | 0         | 0               | 0                   | 0                 | 0         | <b>0</b>     |
| 6            | Construction                       | 0         | 0               | 0                   | 0                 | 0         | <b>0</b>     |
| 7            | Electricity, Gas & Water Supply    | 1         | 0               | 1                   | 48                | 0         | <b>50</b>    |
| 8            | Transport, Storage & Communication | 5         | 0               | 263                 | 19                | 33        | <b>320</b>   |
| 9            | Trade, Hotel & Restaurant          | 0         | 0               | 0                   | 0                 | 0         | <b>0</b>     |
| 10           | Banking and Insurance              | 0         | 0               | 0                   | 0                 | 0         | <b>0</b>     |
| 11           | Public Administration              | 0         | 0               | 0                   | 0                 | 0         | <b>0</b>     |
| 12           | Other Services                     | 4         | 0               | 2                   | 1                 | 0         | <b>6</b>     |
| <b>Total</b> |                                    | <b>19</b> | <b>0</b>        | <b>1,216</b>        | <b>91</b>         | <b>35</b> | <b>1,360</b> |

Note : Figures may not add up due to rounding.

**ANNEXURE - I** (Contd.)**GROSS FIXED CAPITAL FORMATION OF "DEPARTMENTAL ENTERPRISES"  
BY INDUSTRY OF USE AND BY TYPE OF ASSETS****YEAR : 2001-02**

(At Current Prices)

(₹ Crore)

| Sr. No.      | Industry                           | Buildings | Roads & Bridges | Other Constructions | Plant & Machinery | Transport | Total GFCF   |
|--------------|------------------------------------|-----------|-----------------|---------------------|-------------------|-----------|--------------|
| (1)          | (2)                                | (3)       | (4)             | (5)                 | (6)               | (7)       | (8)          |
| 1            | Agriculture including livestock    | 2         | 0               | 1,171               | 19                | 0         | 1,192        |
| 2            | Forestry and Logging               | 0         | 0               | 16                  | 0                 | 0         | 17           |
| 3            | Fishing                            | 0         | 0               | 0                   | 0                 | 0         | 0            |
| 4            | Mining and Quarrying               | 0         | 0               | 0                   | 0                 | 0         | 0            |
| 5            | Manufacturing                      | 0         | 0               | 0                   | 0                 | 0         | 0            |
| 6            | Construction                       | 0         | 0               | 0                   | 0                 | 0         | 0            |
| 7            | Electricity, Gas & Water Supply    | 33        | 0               | 1                   | 46                | 0         | 81           |
| 8            | Transport, Storage & Communication | 11        | 0               | 20                  | 60                | 19        | 111          |
| 9            | Trade, Hotel & Restaurant          | 0         | 0               | 0                   | 0                 | 0         | 0            |
| 10           | Banking and Insurance              | 0         | 0               | 0                   | 0                 | 0         | 0            |
| 11           | Public Administration              | 0         | 0               | 0                   | 0                 | 0         | 0            |
| 12           | Other Services                     | 2         | 0               | 9                   | 2                 | 0         | 13           |
| <b>Total</b> |                                    | <b>48</b> | <b>0</b>        | <b>1,218</b>        | <b>127</b>        | <b>20</b> | <b>1,414</b> |

Note : Figures may not add up due to rounding.

**ANNEXURE - I** (Contd.)**GROSS FIXED CAPITAL FORMATION OF "DEPARTMENTAL ENTERPRISES"  
BY INDUSTRY OF USE AND BY TYPE OF ASSETS****YEAR : 2002-03**

(At Current Prices)

(₹ Crore)

| Sr. No.      | Industry                           | Buildings | Roads & Bridges | Other Constructions | Plant & Machinery | Transport | Total GFCF   |
|--------------|------------------------------------|-----------|-----------------|---------------------|-------------------|-----------|--------------|
| (1)          | (2)                                | (3)       | (4)             | (5)                 | (6)               | (7)       | (8)          |
| 1            | Agriculture including livestock    | 1         | 0               | 2,391               | 24                | 0         | 2,415        |
| 2            | Forestry and Logging               | 0         | 0               | 20                  | 0                 | 0         | 20           |
| 3            | Fishing                            | 0         | 0               | 0                   | 0                 | 0         | 0            |
| 4            | Mining and Quarrying               | 0         | 0               | 0                   | 0                 | 0         | 0            |
| 5            | Manufacturing                      | 0         | 0               | 0                   | 0                 | 0         | 0            |
| 6            | Construction                       | 0         | 0               | 0                   | 0                 | 0         | 0            |
| 7            | Electricity, Gas & Water Supply    | 35        | 0               | 1                   | 48                | 0         | 84           |
| 8            | Transport, Storage & Communication | 8         | 0               | 8                   | 36                | 45        | 97           |
| 9            | Trade, Hotel & Restaurant          | 0         | 0               | 0                   | 0                 | 0         | 0            |
| 10           | Banking and Insurance              | 0         | 0               | 0                   | 0                 | 0         | 0            |
| 11           | Public Administration              | 0         | 0               | 0                   | 0                 | 0         | 0            |
| 12           | Other Services                     | 2         | 0               | 10                  | 2                 | 0         | 14           |
| <b>Total</b> |                                    | <b>46</b> | <b>0</b>        | <b>2,429</b>        | <b>109</b>        | <b>45</b> | <b>2,630</b> |

Note : Figures may not add up due to rounding.

**ANNEXURE - I** (Contd.)**GROSS FIXED CAPITAL FORMATION OF "DEPARTMENTAL ENTERPRISES"  
BY INDUSTRY OF USE AND BY TYPE OF ASSETS****YEAR : 2003-04**

(At Current Prices)

(₹ Crore)

| Sr. No.      | Industry                           | Buildings | Roads & Bridges | Other Constructions | Plant & Machinery | Transport | Total GFCF |
|--------------|------------------------------------|-----------|-----------------|---------------------|-------------------|-----------|------------|
| (1)          | (2)                                | (3)       | (4)             | (5)                 | (6)               | (7)       | (8)        |
| 1            | Agriculture including livestock    | 0         | 0               | 583                 | 8                 | 0         | <b>591</b> |
| 2            | Forestry and Logging               | 0         | 0               | 0                   | 0                 | 13        | <b>14</b>  |
| 3            | Fishing                            | 0         | 0               | 0                   | 0                 | 0         | <b>0</b>   |
| 4            | Mining and Quarrying               | 0         | 0               | 0                   | 0                 | 0         | <b>0</b>   |
| 5            | Manufacturing                      | 1         | 0               | 4                   | 1                 | 11        | <b>17</b>  |
| 6            | Construction                       | 0         | 0               | 0                   | 0                 | 0         | <b>0</b>   |
| 7            | Electricity, Gas & Water Supply    | 1         | 0               | 29                  | 25                | 2         | <b>58</b>  |
| 8            | Transport, Storage & Communication | 4         | 1               | 18                  | 62                | 46        | <b>131</b> |
| 9            | Trade, Hotel & Restaurant          | 0         | 0               | 0                   | 0                 | 0         | <b>0</b>   |
| 10           | Banking and Insurance              | 0         | 0               | 0                   | 0                 | 0         | <b>0</b>   |
| 11           | Public Administration              | 0         | 0               | 0                   | 0                 | 0         | <b>0</b>   |
| 12           | Other Services                     | 2         | 0               | 39                  | 2                 | 0         | <b>43</b>  |
| <b>Total</b> |                                    | <b>8</b>  | <b>1</b>        | <b>674</b>          | <b>99</b>         | <b>73</b> | <b>854</b> |

Note : Figures may not add up due to rounding.

**ANNEXURE - II**

**GROSS FIXED CAPITAL FORMATION OF "NON-DEPARTMENTAL ENTERPRISES"  
BY INDUSTRY OF USE AND BY TYPE OF ASSETS**

**YEAR : 1999-2000**

(At Current Prices)

(₹ Crore)

| Sr. No.      | Industry                           | Buildings    | Roads & Bridges | Other Constructions | Plant & Machinery | Transport  | Total GFCF   |
|--------------|------------------------------------|--------------|-----------------|---------------------|-------------------|------------|--------------|
| (1)          | (2)                                | (3)          | (4)             | (5)                 | (6)               | (7)        | (8)          |
| 1            | Agriculture including livestock    | 5            | 0               | 432                 | 6                 | 0          | 442          |
| 2            | Forestry and Logging               | 1            | 0               | 49                  | 0                 | 0          | 50           |
| 3            | Fishing                            | 0            | 0               | 0                   | 2                 | 2          | 5            |
| 4            | Mining and Quarrying               | 29           | 0               | (-)21               | 6                 | 223        | 236          |
| 5            | Manufacturing                      | 64           | 0               | 32                  | 1,243             | 16         | 1,355        |
| 6            | Construction                       | 1,029        | 0               | 4,210               | 8                 | 2          | 5,249        |
| 7            | Electricity, Gas & Water Supply    | 80           | 0               | 46                  | 362               | 3          | 491          |
| 8            | Transport, Storage & Communication | 165          | 0               | 27                  | 47                | 187        | 425          |
| 9            | Trade, Hotel & Restaurant          | 63           | 0               | 6                   | 226               | 36         | 331          |
| 10           | Banking and Insurance              | 1            | 0               | 0                   | 51                | 0          | 52           |
| 11           | Public Administration              | 0            | 0               | 0                   | 0                 | 1          | 1            |
| 12           | Other Services                     | (-)4         | 0               | 0                   | 2                 | 0          | (-)3         |
| <b>Total</b> |                                    | <b>1,433</b> | <b>0</b>        | <b>4,781</b>        | <b>1,953</b>      | <b>469</b> | <b>8,636</b> |

Note : Figures may not add up due to rounding.

**ANNEXURE - II (Contd.)**

**GROSS FIXED CAPITAL FORMATION OF "NON-DEPARTMENTAL ENTERPRISES"  
BY INDUSTRY OF USE AND BY TYPE OF ASSETS**

**YEAR : 2000-01**

(At Current Prices)

(₹ Crore)

| Sr. No.      | Industry                           | Buildings  | Roads & Bridges | Other Constructions | Plant & Machinery | Transport  | Total GFCF   |
|--------------|------------------------------------|------------|-----------------|---------------------|-------------------|------------|--------------|
| (1)          | (2)                                | (3)        | (4)             | (5)                 | (6)               | (7)        | (8)          |
| 1            | Agriculture including livestock    | 6          | 0               | 1,300               | 6                 | 1          | 1,311        |
| 2            | Forestry and Logging               | 0          | 0               | 33                  | 0                 | 0          | 33           |
| 3            | Fishing                            | 0          | 0               | 1                   | 11                | 10         | 22           |
| 4            | Mining and Quarrying               | 40         | 0               | 69                  | 81                | 1          | 190          |
| 5            | Manufacturing                      | 54         | 0               | 17                  | 373               | 11         | 455          |
| 6            | Construction                       | 596        | 0               | 3,731               | 5                 | 1          | 4,333        |
| 7            | Electricity, Gas & Water Supply    | 201        | 0               | 2                   | 132               | 1          | 335          |
| 8            | Transport, Storage & Communication | 40         | 0               | 58                  | 75                | 424        | 597          |
| 9            | Trade, Hotel & Restaurant          | 48         | 0               | 12                  | 78                | 2          | 140          |
| 10           | Banking and Insurance              | 1          | 0               | 0                   | 51                | 0          | 52           |
| 11           | Public Administration              | 1          | 0               | 56                  | 1                 | 0          | 57           |
| 12           | Other Services                     | (-)4       | 0               | 0                   | (-)3              | 0          | (-)7         |
| <b>Total</b> |                                    | <b>982</b> | <b>0</b>        | <b>5,277</b>        | <b>809</b>        | <b>451</b> | <b>7,519</b> |

Note : Figures may not add up due to rounding.

**ANNEXURE - II (Contd.)**  
**GROSS FIXED CAPITAL FORMATION OF "NON-DEPARTMENTAL ENTERPRISES"**  
**BY INDUSTRY OF USE AND BY TYPE OF ASSETS**

**YEAR : 2001-02**

(At Current Prices)

(₹ Crore)

| Sr. No. | Industry                           | Buildings  | Roads & Bridges | Other Constructions | Plant & Machinery | Transport  | Total GFCF   |
|---------|------------------------------------|------------|-----------------|---------------------|-------------------|------------|--------------|
| (1)     | (2)                                | (3)        | (4)             | (5)                 | (6)               | (7)        | (8)          |
| 1       | Agriculture including livestock    | 7          | 0               | 1,108               | 3                 | 0          | 1,118        |
| 2       | Forestry and Logging               | 0          | 0               | 38                  | 0                 | 0          | 38           |
| 3       | Fishing                            | 1          | 0               | 8                   | 2                 | 1          | 12           |
| 4       | Mining and Quarrying               | 30         | 0               | 46                  | 131               | 0          | 207          |
| 5       | Manufacturing                      | 45         | 0               | 12                  | 2,249             | 8          | 2,314        |
| 6       | Construction                       | 105        | 0               | 2,683               | 3                 | 0          | 2,792        |
| 7       | Electricity, Gas & Water Supply    | 160        | 0               | 591                 | 706               | 0          | 1,457        |
| 8       | Transport, Storage & Communication | 30         | 0               | 24                  | 31                | 198        | 283          |
| 9       | Trade, Hotel & Restaurant          | 69         | 0               | 2                   | 73                | 1          | 146          |
| 10      | Banking and Insurance              | 1          | 0               | 0                   | 51                | 0          | 51           |
| 11      | Public Administration              | 0          | 0               | 78                  | 0                 | 0          | 79           |
| 12      | Other Services                     | (-7)       | 0               | 0                   | (-1)              | 0          | (-9)         |
|         | <b>Total</b>                       | <b>441</b> | <b>0</b>        | <b>4,590</b>        | <b>3,249</b>      | <b>209</b> | <b>8,489</b> |

Note : Figures may not add up due to rounding.

**ANNEXURE - II (Contd.)**  
**GROSS FIXED CAPITAL FORMATION OF "NON-DEPARTMENTAL ENTERPRISES"**  
**BY INDUSTRY OF USE AND BY TYPE OF ASSETS**

**YEAR 2002-03**

(At Current Prices)

(₹ Crore)

| Sr. No. | Industry                           | Buildings  | Roads & Bridges | Other Constructions | Plant & Machinery | Transport | Total GFCF   |
|---------|------------------------------------|------------|-----------------|---------------------|-------------------|-----------|--------------|
| (1)     | (2)                                | (3)        | (4)             | (5)                 | (6)               | (7)       | (8)          |
| 1       | Agriculture including livestock    | 15         | 0               | 1,428               | 13                | 0         | 1,456        |
| 2       | Forestry and Logging               | 0          | 0               | 43                  | 0                 | 0         | 44           |
| 3       | Fishing                            | 0          | 0               | 0                   | (-7)              | 0         | (-7)         |
| 4       | Mining and Quarrying               | 30         | 0               | 42                  | 68                | 1         | 141          |
| 5       | Manufacturing                      | 20         | 0               | 8                   | 168               | 5         | 201          |
| 6       | Construction                       | 140        | 0               | 1,402               | 5                 | 0         | 1,547        |
| 7       | Electricity, Gas & Water Supply    | 296        | 0               | 629                 | 1,016             | 1         | 1,942        |
| 8       | Transport, Storage & Communication | 75         | 0               | 45                  | 72                | 67        | 259          |
| 9       | Trade, Hotel & Restaurant          | 20         | 0               | 1                   | 47                | 2         | 69           |
| 10      | Banking and Insurance              | 1          | 0               | 0                   | 51                | 0         | 51           |
| 11      | Public Administration              | 0          | 0               | 61                  | 0                 | 0         | 61           |
| 12      | Other Services                     | (-7)       | 0               | 0                   | (-1)              | 0         | (-8)         |
|         | <b>Total</b>                       | <b>589</b> | <b>0</b>        | <b>3,660</b>        | <b>1,431</b>      | <b>76</b> | <b>5,756</b> |

Note : Figures may not add up due to rounding.

**ANNEXURE - II** (Contd.)**GROSS FIXED CAPITAL FORMATION OF "NON-DEPARTMENTAL ENTERPRISES"  
BY INDUSTRY OF USE AND BY TYPE OF ASSETS****YEAR : 2003-04**

(At Current Prices)

(₹ Crore)

| <b>Sr. No.</b> | <b>Industry</b>                    | <b>Buildings</b> | <b>Roads &amp; Bridges</b> | <b>Other Constructions</b> | <b>Plant &amp; Machinery</b> | <b>Transport</b> | <b>Total GFCF</b> |
|----------------|------------------------------------|------------------|----------------------------|----------------------------|------------------------------|------------------|-------------------|
| (1)            | (2)                                | (3)              | (4)                        | (5)                        | (6)                          | (7)              | (8)               |
| 1              | Agriculture including livestock    | 1                | 0                          | 667                        | 1                            | 0                | <b>668</b>        |
| 2              | Forestry and Logging               | 0                | 0                          | 48                         | 0                            | 0                | <b>49</b>         |
| 3              | Fishing                            | 0                | 0                          | 0                          | (-2)                         | 3                | <b>1</b>          |
| 4              | Mining and Quarrying               | 22               | 0                          | 49                         | 6                            | 33               | <b>111</b>        |
| 5              | Manufacturing                      | 25               | 0                          | 8                          | 178                          | 14               | <b>226</b>        |
| 6              | Construction                       | (-132)           | 0                          | 886                        | 3                            | 882              | <b>1,640</b>      |
| 7              | Electricity, Gas & Water Supply    | 69               | 0                          | 555                        | 541                          | 1,381            | <b>2,546</b>      |
| 8              | Transport, Storage & Communication | 32               | 0                          | 13                         | (-22)                        | 317              | <b>340</b>        |
| 9              | Trade, Hotel & Restaurant          | 17               | 0                          | 5                          | 32                           | 1                | <b>55</b>         |
| 10             | Banking and Insurance              | 1                | 0                          | 0                          | 51                           | 0                | <b>51</b>         |
| 11             | Public Administration              | 2                | 0                          | 48                         | 9                            | 14               | <b>72</b>         |
| 12             | Other Services                     | (-7)             | 0                          | 0                          | (-3)                         | 0                | <b>(-10)</b>      |
|                | <b>Total</b>                       | <b>31</b>        | <b>0</b>                   | <b>2,280</b>               | <b>795</b>                   | <b>2,644</b>     | <b>5,750</b>      |

Note : Figures may not add up due to rounding.

**ANNEXURE - III****GROSS FIXED CAPITAL FORMATION OF "LOCALBODIES"  
BY INDUSTRY OF USE AND BY TYPE OF ASSETS****YEAR : 1999-2000**

(At Current Prices)

(₹ Crore)

| <b>Industry</b> | <b>Buildings</b> | <b>Roads &amp; Bridges</b> | <b>Other Constructions</b> | <b>Transport</b> | <b>Machinery</b> | <b>Total</b> |
|-----------------|------------------|----------------------------|----------------------------|------------------|------------------|--------------|
| (1)             | (2)              | (3)                        | (4)                        | (5)              | (6)              | (7)          |
| Administration  | 252              | 524                        | 358                        | 29               | 107              | <b>1,270</b> |
| Construction    | 0                | 0                          | 0                          | 0                | 4                | <b>4</b>     |
| Water Supply    | 15               | 1                          | 167                        | 1                | 20               | <b>203</b>   |
| Other Services  | 216              | 3                          | 257                        | 13               | 51               | <b>539</b>   |
| <b>Total</b>    | <b>482</b>       | <b>528</b>                 | <b>782</b>                 | <b>43</b>        | <b>181</b>       | <b>2,016</b> |

Note : Figures may not add up due to rounding.

**ANNEXURE - III(Contd.)****GROSS FIXED CAPITAL FORMATION OF "LOCALBODIES"  
BY INDUSTRY OF USE AND BY TYPE OF ASSETS****YEAR : 2000-01**

(At Current Prices)

(₹ Crore)

| <b>Industry</b> | <b>Buildings</b> | <b>Roads &amp; Bridges</b> | <b>Other Constructions</b> | <b>Transport</b> | <b>Machinery</b> | <b>Total</b> |
|-----------------|------------------|----------------------------|----------------------------|------------------|------------------|--------------|
| (1)             | (2)              | (3)                        | (4)                        | (5)              | (6)              | (7)          |
| Administration  | 159              | 396                        | 237                        | 117              | 29               | <b>939</b>   |
| Construction    | 0                | 0                          | 0                          | 8                | 4                | <b>11</b>    |
| Water Supply    | 17               | 3                          | 263                        | 3                | 22               | <b>307</b>   |
| Other Services  | 242              | 13                         | 152                        | 5                | 103              | <b>514</b>   |
| <b>Total</b>    | <b>417</b>       | <b>411</b>                 | <b>652</b>                 | <b>133</b>       | <b>158</b>       | <b>1,771</b> |

Note : Figures may not add up due to rounding.

**ANNEXURE - III(Contd.)****GROSS FIXED CAPITAL FORMATION OF "LOCALBODIES"  
BY INDUSTRY OF USE AND BY TYPE OF ASSETS****YEAR : 2001-02**

(At Current Prices)

(₹ Crore)

| <b>Industry</b> | <b>Buildings</b> | <b>Roads &amp; Bridges</b> | <b>Other Constructions</b> | <b>Transport</b> | <b>Machinery</b> | <b>Total</b> |
|-----------------|------------------|----------------------------|----------------------------|------------------|------------------|--------------|
| (1)             | (2)              | (3)                        | (4)                        | (5)              | (6)              | (7)          |
| Administration  | 72               | 187                        | 132                        | 25               | 34               | <b>450</b>   |
| Construction    | 139              | 261                        | 191                        | 8                | 5                | <b>604</b>   |
| Water Supply    | 121              | 2                          | 360                        | 5                | 29               | <b>518</b>   |
| Other Services  | 359              | 87                         | 139                        | 18               | 40               | <b>642</b>   |
| <b>Total</b>    | <b>691</b>       | <b>538</b>                 | <b>822</b>                 | <b>57</b>        | <b>108</b>       | <b>2,214</b> |

Note : Figures may not add up due to rounding.

**ANNEXURE - III**(Contd.)

**GROSS FIXED CAPITAL FORMATION OF "LOCALBODIES"  
BY INDUSTRY OF USE AND BY TYPE OF ASSETS**

YEAR : 2002-03

(At Current Prices)

(₹ Crore)

| <b>Industry</b> | <b>Buildings</b> | <b>Roads &amp; Bridges</b> | <b>Other Constructions</b> | <b>Transport</b> | <b>Machinery</b> | <b>Total</b> |
|-----------------|------------------|----------------------------|----------------------------|------------------|------------------|--------------|
| (1)             | (2)              | (3)                        | (4)                        | (5)              | (6)              | (7)          |
| Administration  | 74               | 196                        | 139                        | 27               | 36               | <b>471</b>   |
| Construction    | 144              | 271                        | 199                        | 9                | 5                | <b>628</b>   |
| Water Supply    | 126              | 2                          | 376                        | 5                | 30               | <b>540</b>   |
| Other Services  | 373              | 90                         | 144                        | 19               | 41               | <b>668</b>   |
| <b>Total</b>    | <b>718</b>       | <b>560</b>                 | <b>858</b>                 | <b>59</b>        | <b>112</b>       | <b>2,306</b> |

Note : Figures may not add up due to rounding.

**ANNEXURE - III**(Contd.)

**GROSS FIXED CAPITAL FORMATION OF "LOCALBODIES"  
BY INDUSTRY OF USE AND BY TYPE OF ASSETS**

YEAR : 2003-04

(At Current Prices)

(₹ Crore)

| <b>Industry</b> | <b>Buildings</b> | <b>Roads &amp; Bridges</b> | <b>Other Constructions</b> | <b>Transport</b> | <b>Machinery</b> | <b>Total</b> |
|-----------------|------------------|----------------------------|----------------------------|------------------|------------------|--------------|
| (1)             | (2)              | (3)                        | (4)                        | (5)              | (6)              | (7)          |
| Administration  | 176              | 415                        | 304                        | 10               | 33               | <b>937</b>   |
| Construction    | 0                | 0                          | 0                          | 0                | 7                | <b>7</b>     |
| Water Supply    | 67               | 7                          | 320                        | 0                | 13               | <b>408</b>   |
| Other Services  | -86              | 5                          | 351                        | 9                | 36               | <b>315</b>   |
| <b>Total</b>    | <b>157</b>       | <b>428</b>                 | <b>974</b>                 | <b>19</b>        | <b>89</b>        | <b>1,667</b> |

Note : Figures may not add up due to rounding.

**ANNEXURE - IV****GROSS FIXED CAPITAL FORMATION OF SUPRA-REGIONAL SECTOR****YEAR : 1999-00 TO 2003-04**

(At Current Prices)

(₹ Crore)

| <b>Sr. No.</b> | <b>Sectors</b>                           | <b>1999-2000</b> | <b>2000-01</b> | <b>2001-02</b> | <b>2002-03</b> | <b>2003-04</b> |
|----------------|--|------------------|----------------|----------------|----------------|----------------|
| (1)            | (2)                                      | (3)              | (4)            | (5)            | (6)            | (7)            |
| 1              | <b>Railways</b>                          | 570              | 455            | 550            | 445            | 814            |
| 2              | <b>Communication</b>                     | 2,375            | 6,413          | 2,640          | 1,770          | 942            |
| 3              | <b>Banking &amp; Insurance</b>           | 540              | 497            | 334            | 507            | 918            |
| 4              | <b>Central Government Administration</b> | 1,434            | 1,050          | 1,228          | 1,362          | 1,573          |
| <b>TOTAL</b>   |  | <b>4,918</b>     | <b>8,415</b>   | <b>4,752</b>   | <b>4,084</b>   | <b>4,248</b>   |

Note : Figures may not add up due to rounding.