



**ESTIMATES OF  
GROSS FIXED CAPITAL  
FORMATION  
(PUBLIC & PRIVATE SECTOR)  
2004-05 TO 2010-11  
( BaseYear 2004-05 )  
MAHARASHTRA**



**Directorate of Economics & Statistics,  
Government of Maharashtra. Mumbai.**

Government of Maharashtra

Estimates of  
Gross Fixed Capital Formation

( Public & Private Sector - 2004-05 to 2010-11 )

[ Base Year 2004-05 ]

Directorate of Economics & Statistics,  
Mumbai

## P R E F A C E

Capital Formation is an indicator to measure the productive potential of the economy. Capital formation is that part of total expenditure which is not consumed but added to the fixed assets and stocks.

The Directorate of Economics and Statistics compiles the estimates of Gross Fixed Capital Formation (GFCF) in public sector in the State at current prices for the specified base year series.

The Directorate has attempted to compile the estimates of GFCF from the private sector for year 2004-05 to 2010-11 for the first time.

This publication consists the estimates of GFCF of Public & Private Sector at current prices for the years 2004-05 to 2010-11 for the Base Year 2004-05 series. These estimates are compiled in accordance with the guidance provided by the National Statistical Office (erstwhile Central Statistics Office), Government of India.

The estimates of GFCF prepared and presented in this publication for public sector by type of assets, by type of institution & by type of industry of use and for the private sector by type of industry of use only.

I am thankful to the concerned Departments, Offices and Undertakings of the State and Central Government for providing useful information in time which enabled us to bring out this publication.

Suggestions & comments towards improvement in preparation of these estimates and report are most welcome.

MUMBAI  
April, 2021.

**(R. R. SHINGE)**

***Director  
Directorate of Economics & Statistics,  
Planning Department,  
Government of Maharashtra,  
MUMBAI***

## **Team associated with the preparation of the report**

1. Shri.P.H.Bhagoorkar	Joint Director
2. Shri.N.K.Firake	Deputy Director
3. Shri.N.M.Prabhudesai	Research Officer
4. Shri.H.R.Bhoye	Research Officer (I/c)
5. Shri.Y.J.Gangikar	Research Assistant
6. Shri.Babasaheb Dahiphale	Research Assistant

## CONTENTS

		Particulars	Page No.
<b>Part</b>	<b>I</b>	Introduction	1 to 4
<b>Part</b>	<b>II</b>	Graphs	6 to 8
<b>Part</b>	<b>III</b>	<b>A) Gross fixed Capital Formation of Maharashtra</b>	
Table - 1		Gross Fixed Capital Formation of Public Sector in Maharashtra by Institutional Sector	10
Table - 2		Gross Fixed Capital Formation of Public Sector in Maharashtra by Type of Assets	10
Table - 3		Gross Fixed Capital Formation of Public Sector in Maharashtra by Industry of Use	10
Table - 4		Gross Fixed Capital Formation of Public Sector in Maharashtra by Industry of Use & by Type of Assets for the years 2004-05 to 2010-11	11 to 14
		<b>B) Gross fixed Capital Formation of Maharashtra &amp; All India</b>	
Table - 5		Gross Fixed Capital Formation of Public and Private Sector in Maharashtra & All India by Industry of Use for the years 2004-05 to 2010-11.	15 to 21
		<b>C) Gross fixed Capital Formation and Gross State Domestic Product of Maharashtra</b>	
Table - 6		Gross Fixed Capital Formation and Gross State Domestic Product by broad sectors from 2004-05 to 2010-11 at Current Prices.	22
Table - 7		Gross Fixed Capital Formation as percentage to Gross State Domestic Product by broad sectors from 2004-05 to 2010-11 at Current Prices.	22
<b>Part</b>	<b>IV</b>	<b>Annexure</b>	
Annexure	<b>I</b>	Gross Fixed Capital Formation “Dept. Enterprises” by Industry of Use & by Type of Assets for the years 2004-05 to 2010-11	24 to 27
Annexure	<b>II</b>	Gross Fixed Capital Formation “Non-Dept. Enterprises” by Industry of Use & by Type of Assets for the years 2004-05 to 2010-11	28 to 31
Annexure	<b>III</b>	Gross Fixed Capital Formation “Local Bodies” by Industry of Use & by Type of Assets for the years 2004-05 to 2010-11	32 to 34
Annexure	<b>IV</b>	Gross Fixed Capital Formation from “Supra Regional Sector” for the years 2004-05 to 2010-11	34
Annexure	<b>V</b>	Methodology for estimation of Private Sector	36 to 38

## **PART- I**

### **INTRODUCTION**

Capital Formation is an indicator to measure the productive potential of the economy. Capital formation is that part of total expenditure which is not consumed but added to the fixed assets and stocks.

#### ***Concepts and Definitions :***

Gross Capital Formation is measured by the total value of the Gross Fixed Capital Formation (GFCF), change in inventory and acquisitions less disposals of valuables. The estimates of capital formation can be prepared by following three approaches.

- i) Production or commodity flow approach
- ii) Savings and flow of funds approach
- iii) Expenditure approach

At National level, estimates are prepared by following all the above approaches. As the Production or commodity flow approach and Savings & flow of funds approach are not feasible at State level, expenditure approach is used prepare estimates of GFCF at State level. Similarly, data of change in stocks are not available at State level due to open boundaries of the States. Hence, at the State level estimates of Gross Fixed Capital Formation prepared as per recommendations of Regional Accounts Committee (RAC).

Gross Fixed Capital Formation refers to aggregate of gross addition to the fixed assets in stocks during a period of account. Fixed assets comprises of buildings, roads & bridges, other construction, machinery equipments and transport equipments.

#### **Coverage :**

In this report the estimates of Gross Fixed Capital Formation in the public sector from 2004-05 to 2010-11 and the estimates of Gross Fixed Capital Formation in the public and private sector from 2004-05 to 2010-11 are given. The DES is first time publishing the estimates of Gross Fixed Capital Formation in the private sector from 2004-05 at current prices.

Public Sector consists of Departmental Commercial Undertaking (DCU), Non-Departmental Commercial Undertaking (NDCU) and administrative departments of Central Government, State Government and Local Bodies.

Private sector consists of Private Corporate and Household sector.

The GFCF estimates of Supra-Regional Sectors are prepared at current prices only and consists of Railways, Communications, Banking and Insurance.

## **Methodology:**

Estimates of Gross Fixed Capital Formation have been prepared as per the guidelines for GFCF estimate at State level provided by National Statistical Office from time to time.

**Public Sector :** Estimates of Gross Fixed Capital Formation for Public Sector are prepared by type of assets, by type of institution and by industry of use.

**a.** Estimates of Gross Capital Formation have been prepared for following **Types of Assets**

- Buildings
- Roads & Bridges
- Other Constructions
- Plant & Machinery
- Transport Equipments

**b.** Estimates of Gross Fixed Capital Formation **by type of Institution** are in respect of Government Administrative Departments, Departmental Enterprises and Non-Departmental Enterprises of Central and State Government and Local Bodies in the State. These estimates are prepared by compiling data available in the State budget, balance sheet of Public Sector Enterprises/ Companies and from the annual statement of accounts of Local Bodies in the State.

**c.** The economy has been divided into following sectors for estimation of Gross Fixed Capital Formation **by industry of use.**

- (i) Agriculture including Livestock
- (ii) Forestry and Logging
- (iii) Fishing
- (iv) Mining and Quarrying
- (v) Manufacturing
- (vi) Electricity, Gas and Water Supply
- (vii) Construction
- (viii) Trade, Hotels and Restaurants
- (ix) Transport, Storage and Communication
  - i) Railways
  - ii) Transport by other means
  - iii) Storage
  - iv) Communication
- (x) Banking and Insurance
- (xi) Real estate, ownership of dwelling & business services
- (xii) Public Administration
- (xiii) Other Services

The estimates of GFCF for each sector are prepared separately for public and private sector.

## **Private Sector :**

The methodology followed in the compilation of the estimates of GFCF is in accordance with the guidelines provided by the Central Statistical Office. Methodology used for estimating Gross Fixed Capital Formation (GFCF) of Private Sector is as below:

### **Agriculture:**

Data of Fixed capital expenditure on following different items for farm business from All-India Survey on Debt and Investment (AIDIS) of the NSSO in the 59<sup>th</sup> round have been used for preparing the estimates of GFCF in Agriculture for the Private Sector for the year 2002-03.

- 1) Improvement/ reclamation of land
- 2) Orchards and Plantation.
- 3) Farm houses and other construction
- 4) Wells & other irrigation resources
- 5) Agriculture, Machinery & implements
- 6) Transport Equipments
- 7) Other expenditure including furniture & fixtures.

These are used for allocating the All India GFCF estimate of Private Sector .

Bench mark year estimate **GFCF Ratio** = State items covered (item 1 to 7 as mention above) / All India items covered ( item 1 to 7 as mention above) \* All India Pvt. Part GFCF of the sector.

These benchmark estimates of GFCF for 2002-03 are then moved forward on the basis of growth of State Total Value of Output of Agriculture.

### **Livestock:**

All-India private sector GFCF estimates allocated on the basis of GVO of livestock of the State for the year 2004-05 to 2010-11.

### **Forestry and logging:**

Almost all forests are owned by the government, hence, this industry is covered by the public sector. However, a small portion exists in the private sector. The estimates of private sector GFCF for Forestry and logging for the year 2004-05 to 2010-11 have been obtained on the basis of ratio of Trees outside Forest (TOF) growth stock of the State to All India using All India private sector GFCF estimates of Forestry and logging.

### **Fishing:**

The estimates of private sector GFCF for fishing for the year 2004-05 to 2010-11 have been obtained by allocating the All India private sector estimates of fishing sector using the year-wise fish production of the State taken from Department of Animal Husbandry, Dairy and Fisheries, Ministry of Agriculture.

### **Mining and Quarrying:**

The estimates of private sector GFCF for Mining and quarrying for the year 2004-05 to 2010-11 have been obtained on the basis of ratio of GVO of the State to All India of major and minor minerals using All India private sector estimates of Mining and quarrying.

**Manufacturing:**

The State estimates of GFCF for Manufacturing are prepared separately for organized and unorganized sectors. The information on state-wise GFCF available in Annual Survey of Industries (ASI) is used for estimate of GFCF for organized manufacturing sector.

Information available from unit level data of NSS 62<sup>nd</sup> round (2005-06) is used for estimate of GFCF for unorganized manufacturing sector. From the survey results of NSS 62<sup>nd</sup> round, first the State ratios of additions to fixed assets to GVA estimates for 2004-05 are compiled using All-India private GFCF of unorganized manufacturing sector. These benchmark estimates of GFCF for 2004-05 are then moved forward on the basis of growth of State GVA estimates of unorganized manufacturing sector.

**Electricity, Gas and Water Supply:**

The estimates of private sector GFCF for electricity and gas for the year 2004-05 to 2010-11 have been obtained on the basis of ratio of private installed capacity of the State to All India using All India private sector GFCF estimates of Electricity.

**Construction:**

All-India private sector GFCF estimates allocated on the basis of GVA estimates of private sector for Construction industry of the State for the years 2004-05 to 2010-11.

**Trade, Hotels and Restaurants, Transport, Real Estate and Professional Services, Storage:**

Information available from unit level data of NSS 57<sup>th</sup> round (2001-02) is used for estimation of GFCF for these industries. From the survey results of NSS 57<sup>th</sup> round, first the State-wise ratios of additions to fixed assets to GVA estimates for 2004-05 are compiled using All-India total GFCF of these industries. These benchmark estimates of GFCF for 2004-05 are then moved forward on the basis of growth of the State GVA estimates of corresponding industry.

**Ownership of Dwelling:**

The estimation has been prepared with Average value of fixed capital expenditure per household during 2002-03 and Estimated Households from the All-India Survey on Debt and Investment (AIDIS) by the NSSO in the 59<sup>th</sup> round report for the year 2002-03.

**Supra regional Sectors (Private): Communications and Financial Services :**

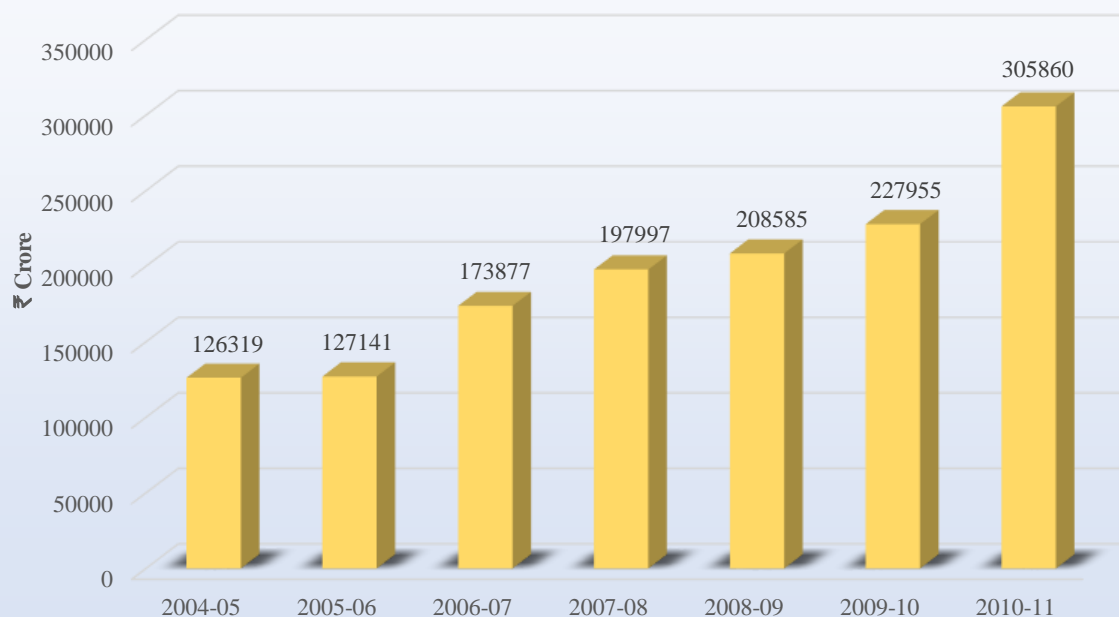
The Supra regional sectors in the private sector namely, financial services and communication are prepared by NSO and made available to the States.

-----\*\*\*-----

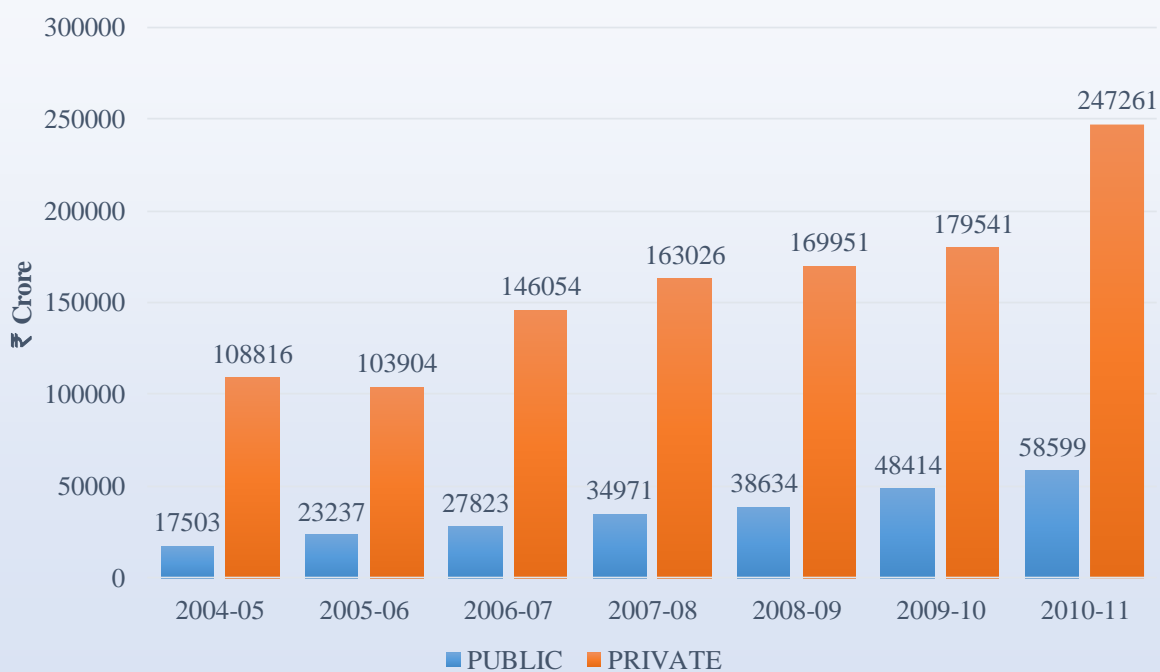
# **PART - II**

# **Graphs**

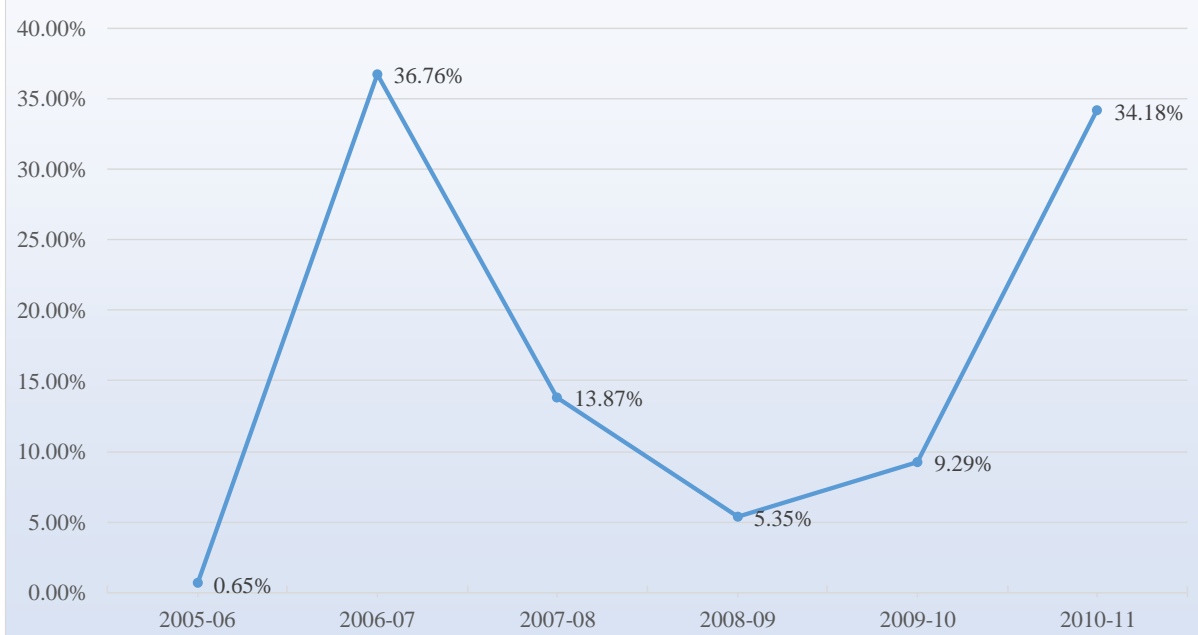
**GRAPH NO 1 : GROSS FIXED CAPITAL FORMATION OF MAHARASHTRA**



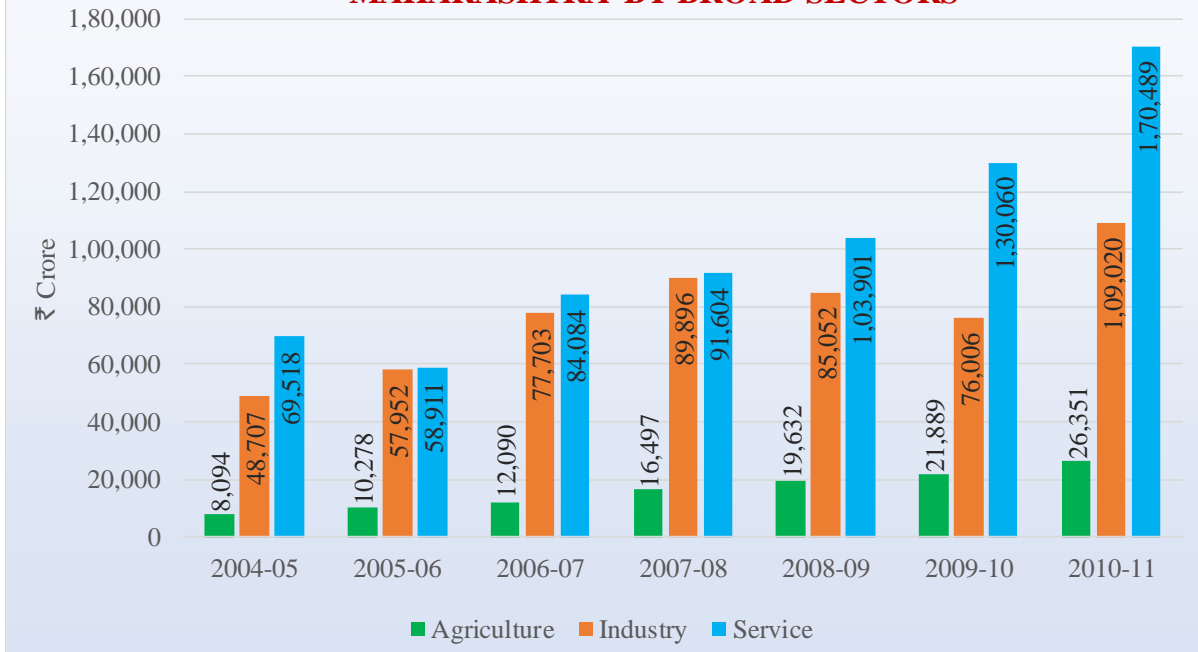
**GRAPH NO 2 : GROSS FIXED CAPITAL FORMATION OF MAHARASHTRA BY PUBLIC & PRIVATE SECTOR**



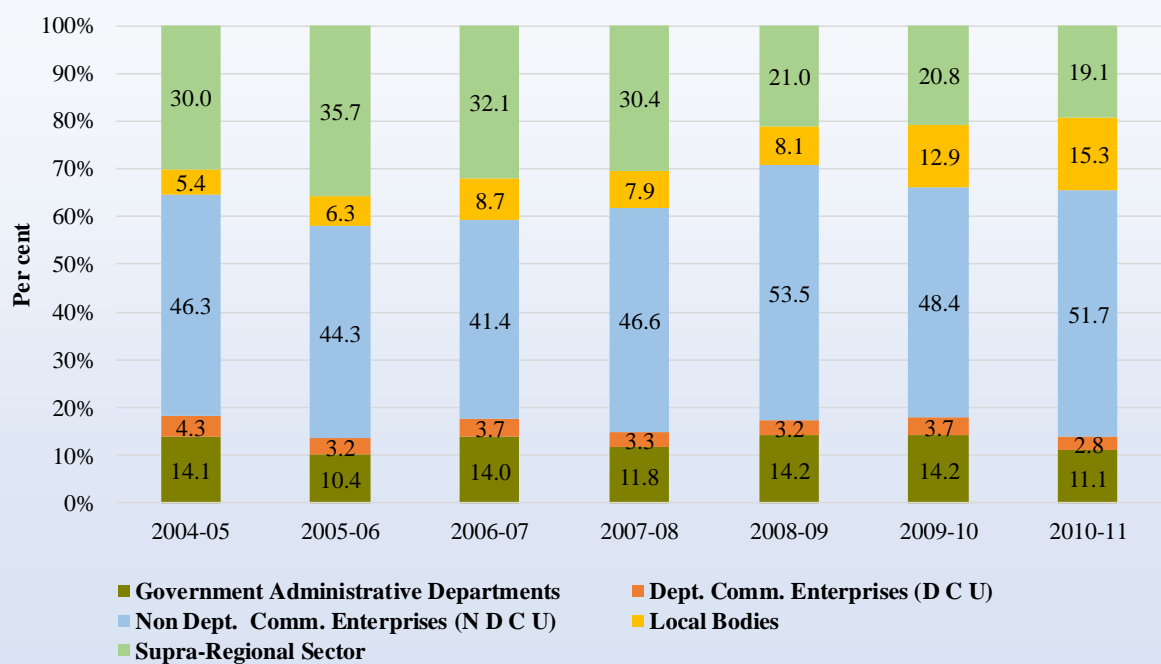
**GRAPH-3 : ANNUAL PERCENTAGE CHANGE IN GROSS FIXED CAPITAL OF MAHARASHTRA**



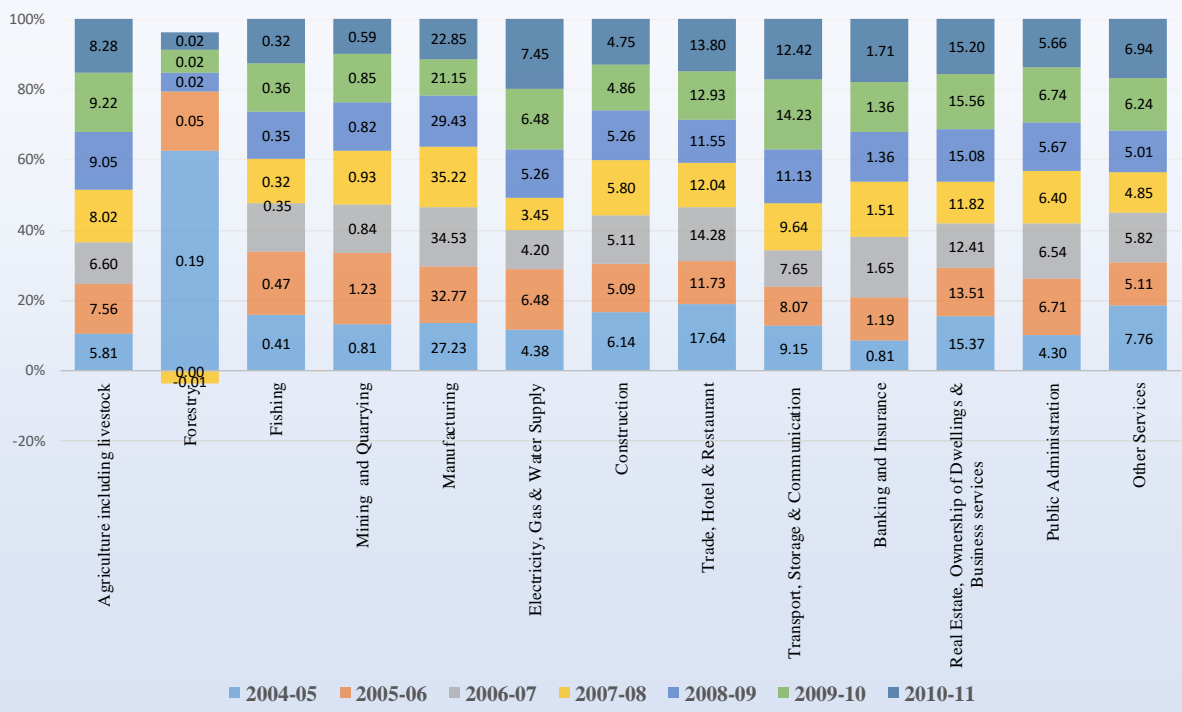
**GRAPH-4 : GROSS FIXED CAPITAL FORMATION OF MAHARASHTRA BY BROAD SECTORS**



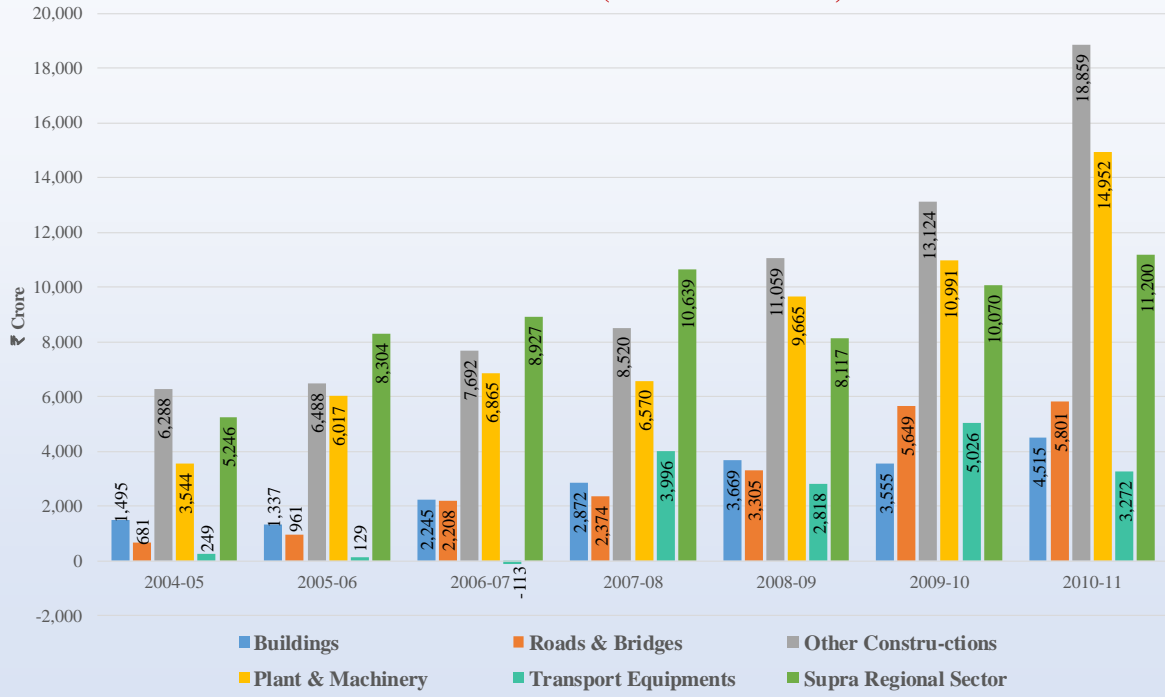
**GRAPH-5 : GROSS FIXED CAPITAL FORMATION OF MAHARASHTRA (PUBLIC SECTOR) BY INSTITUTIONAL SECTOR**



**GRAPH-6 : GROSS FIXED CAPITAL FORMATION OF MAHARASHTRA BY INDUSTRY OF USE IN PERCENTAGE**



**GRAPH-7 : GROSS FIXED CAPITAL FORMATION OF MAHARASHTRA  
BY TYPE OF ASSETS (PUBLIC SECTOR )**



# **PART - III**

## **GFCF**

Table 1 to 4 - Public Sector

Table 5 - Maharashtra and All India  
(Public and Private sector)

Table 6 & 7 - GFCF & GSDP

## GROSS FIXED CAPITAL FORMATION OF PUBLIC SECTOR IN MAHARASHTRA

**TABLE - 1**

*BY INSTITUTION*

(At Current Prices)

(₹ Crore)

Year	Government Administrative Departments	Dept. Comm. Enterprises (D C U)	Non Dept. Comm. Enterprises (N D C U)	Local Bodies	Supra-Regional Sector	Total GFCF
(1)	(2)	(3)	(4)	(5)	(6)	(7)
2004-05	2,462	748	8,103	943	5,246	17,503
2005-06	2,415	754	10,294	1,469	8,304	23,237
2006-07	3,901	1,041	11,526	2,428	8,927	27,823
2007-08	4,114	1,148	16,313	2,757	10,639	34,971
2008-09	5,503	1,229	20,653	3,131	8,117	38,634
2009-10	6,878	1,808	23,413	6,245	10,070	48,414
2010-11	6,504	1,655	30,268	8,973	11,200	58,599

Note : Figures may not add up due to rounding.

**TABLE - 2**

*BY TYPE OF ASSETS*

(At Current Prices)

(₹ Crore)

Y E A R	Buildings	Roads & Bridges	Other Constructions	Plant & Machinery	Transport Equipments	Supra Regional Sector	Total GFCF
(1)	(2)	(3)	(4)	(5)	(6)	(7)	(8)
2004-05	1,495	681	6,288	3,544	249	5,246	17,503
2005-06	1,337	961	6,488	6,017	129	8,304	23,237
2006-07	2,245	2,208	7,692	6,865	(-)113	8,927	27,823
2007-08	2,872	2,374	8,520	6,570	3,996	10,639	34,971
2008-09	3,669	3,305	11,059	9,665	2,818	8,117	38,634
2009-10	3,555	5,649	13,124	10,991	5,026	10,070	48,414
2010-11	4,515	5,801	18,859	14,952	3,272	11,200	58,599

Note : Figures may not add up due to rounding.

**TABLE - 3**

*BY INDUSTRY OF USE*

(At Current Prices)

(₹ Crore)

Sr. No.	INDUSTRY	YEAR						
		2004-05	2005-06	2006-07	2007-08	2008-09	2009-10	2010-11
(1)	(2)	(3)	(4)	(5)	(6)	(7)	(8)	(9)
1	Agriculture including livestock	1,078	2,392	3,191	4,506	5,265	4,738	5,860
2	Forestry and Logging	236	59	(-)6	(-)23	23	37	40
3	Fishing	(-)4	4	(-)46	(-)44	14	13	6
4	Mining and Quarrying	189	190	221	206	306	341	278
5	Manufacturing	574	446	1,897	1,624	1,998	1,198	1,856
6	Construction	2,690	1,544	2,148	2,089	2,839	2,845	3,182
7	Electricity, Gas & Water Supply	3,555	6,195	5,208	4,689	8,037	11,324	16,609
8	Transport, Storage & Communication	2,385	2,548	1,933	7,010	6,110	9,443	9,071
9	Trade, Hotels & Restaurants	101	81	85	205	97	81	132
10	Banking and Insurance	457	884	1,468	1,622	1,710	1,934	2,582
11	Public Administration	5,435	8,536	11,363	12,680	11,836	15,370	17,326
12	Other Services	807	357	361	407	399	1,090	1,657
<b>Total</b>		<b>17,503</b>	<b>23,237</b>	<b>27,823</b>	<b>34,971</b>	<b>38,634</b>	<b>48,414</b>	<b>58,599</b>

Note : Figures may not add up due to rounding.

Table- 4

**GROSS FIXED CAPITAL FORMATION OF PUBLIC SECTOR IN MAHARASHTRA  
BY INDUSTRY OF USE AND BY TYPE OF ASSETS**

**YEAR 2004-05**

(At Current Prices)

(₹ Crore)

Sr. No.	INDUSTRY	Buildings	Roads & Bridges	Other Constructions	Plant & Machinery	Transport Equipments	Supra Regional Sector	Total GFCF
(1)	(2)	(3)	(4)	(5)	(6)	(7)	(8)	(9)
1	Agriculture including livestock	2	0	1,034	30	12	0	<b>1,078</b>
2	Forestry and Logging	0	0	236	0	1	0	<b>237</b>
3	Fishing	0	0	0	(-4)	0	0	<b>(-4)</b>
4	Mining and Quarrying	31	0	38	119	1	0	<b>189</b>
5	Manufacturing	56	0	17	492	9	0	<b>574</b>
6	Construction	523	0	2,012	141	14	0	<b>2,689</b>
7	Electricity, Gas & Water Supply	534	4	871	2,140	6	0	<b>3,555</b>
8	Transport, Railway, Water Transport, Storage & Communication	(-)8	3	269	123	193	1,805	<b>2,385</b>
9	Trade, Hotel & Restaurant	(-)23	0	4	115	6	0	<b>101</b>
10	Banking and Insurance	1	0	69	121	0	267	<b>457</b>
11	Public Administration	201	497	1,442	178	(-)58	3,175	<b>5,435</b>
12	Other Services	178	178	296	89	66	0	<b>807</b>
<b>Total</b>		<b>1,495</b>	<b>681</b>	<b>6,288</b>	<b>3,544</b>	<b>249</b>	<b>5,246</b>	<b>17,503</b>

Note : Figures may not add up due to rounding.

Table- 4(Contd.)

**GROSS FIXED CAPITAL FORMATION OF PUBLIC SECTOR IN MAHARASHTRA  
BY INDUSTRY OF USE AND BY TYPE OF ASSETS**

**YEAR 2005-06**

(At Current Prices)

(₹ Crore)

Sr. No.	INDUSTRY	Buildings	Roads & Bridges	Other Constructions	Plant & Machinery	Transport Equipments	Supra Regional Sector	Total GFCF
(1)	(2)	(3)	(4)	(5)	(6)	(7)	(8)	(9)
1	Agriculture including livestock	1	0	2,374	15	1	0	<b>2,392</b>
2	Forestry and Logging	0	0	57	0	2	0	<b>59</b>
3	Fishing	0	0	0	1	3	0	<b>4</b>
4	Mining and Quarrying	18	0	37	134	1	0	<b>190</b>
5	Manufacturing	99	0	24	306	16	0	<b>446</b>
6	Construction	(-)159	0	1,577	106	21	0	<b>1,544</b>
7	Electricity, Gas & Water Supply	536	1	804	4,824	30	0	<b>6,195</b>
8	Transport, Railway, Water Transport, Storage & Communication	32	1	53	86	3	2,374	<b>2,548</b>
9	Trade, Hotel & Restaurant	24	0	1	50	6	0	<b>81</b>
10	Banking and Insurance	0	0	82	104	0	698	<b>884</b>
11	Public Administration	751	934	1,340	244	34	5,232	<b>8,536</b>
12	Other Services	35	25	138	147	11	0	<b>357</b>
<b>Total</b>		<b>1,337</b>	<b>961</b>	<b>6,488</b>	<b>6,017</b>	<b>129</b>	<b>8,304</b>	<b>23,237</b>

Note : Figures may not add up due to rounding.

**Table- 4(Contd.)**  
**GROSS FIXED CAPITAL FORMATION OF PUBLIC SECTOR IN MAHARASHTRA**  
**BY INDUSTRY OF USE AND BY TYPE OF ASSETS**

**YEAR 2006-07**

(At Current Prices)

(₹ Crore)

Sr. No.	INDUSTRY	Buildings	Roads & Bridges	Other Constructions	Plant & Machinery	Transport Equipments	Supra Regional Sector	Total GFCF
(1)	(2)	(3)	(4)	(5)	(6)	(7)	(8)	(9)
1	Agriculture including livestock	2	0	3,176	12	0	0	<b>3,191</b>
2	Forestry and Logging	0	0	(-)7	0	0	0	(-)6
3	Fishing	(-)1	0	(-)38	(-)3	(-)4	0	(-)46
4	Mining and Quarrying	31	0	75	116	0	0	<b>222</b>
5	Manufacturing	84	0	294	1,495	24	0	<b>1,896</b>
6	Construction	479	0	1,380	218	70	0	<b>2,148</b>
7	Electricity, Gas & Water Supply	188	2	750	4,259	9	0	<b>5,208</b>
8	Transport, Railway, Water Transport, Storage & Communication	130	30	94	138	(-)267	1,809	<b>1,933</b>
9	Trade, Hotel & Restaurant	24	0	1	52	7	0	<b>84</b>
10	Banking and Insurance	1	0	94	79	0	1,296	<b>1,469</b>
11	Public Administration	1,281	2,163	1,820	240	37	5,822	<b>11,363</b>
12	Other Services	25	13	54	259	10	0	<b>361</b>
<b>Total</b>		<b>2,245</b>	<b>2,208</b>	<b>7,691</b>	<b>6,865</b>	<b>(-)113</b>	<b>8,927</b>	<b>27,823</b>

Note : Figures may not add up due to rounding.

**Table- 4(Contd.)**  
**GROSS FIXED CAPITAL FORMATION OF PUBLIC SECTOR IN MAHARASHTRA**  
**BY INDUSTRY OF USE AND BY TYPE OF ASSETS**

**YEAR 2007-08**

(At Current Prices)

(₹ Crore)

Sr. No.	INDUSTRY	Buildings	Roads & Bridges	Other Constructions	Plant & Machinery	Transport Equipments	Supra Regional Sector	Total GFCF
(1)	(2)	(3)	(4)	(5)	(6)	(7)	(8)	(9)
1	Agriculture including livestock	0	0	4,485	18	2	0	<b>4,506</b>
2	Forestry and Logging	0	0	(-)25	0	1	0	(-)23
3	Fishing	(-)1	0	(-)45	2	1	0	(-)44
4	Mining and Quarrying	37	0	52	116	0	0	<b>206</b>
5	Manufacturing	66	0	95	1,442	21	0	<b>1,624</b>
6	Construction	1,166	0	742	121	60	0	<b>2,089</b>
7	Electricity, Gas & Water Supply	373	2	473	3,830	11	0	<b>4,689</b>
8	Transport, Railway, Water Transport, Storage & Communication	(-)26	32	100	132	3,807	2,964	<b>7,010</b>
9	Trade, Hotel & Restaurant	48	0	50	102	5	0	<b>205</b>
10	Banking and Insurance	0	0	408	79	0	1,136	<b>1,622</b>
11	Public Administration	1,188	2,328	2,132	413	80	6,539	<b>12,680</b>
12	Other Services	20	12	52	315	8	0	<b>407</b>
<b>Total</b>		<b>2,872</b>	<b>2,374</b>	<b>8,520</b>	<b>6,570</b>	<b>3,996</b>	<b>10,639</b>	<b>34,971</b>

Note : Figures may not add up due to rounding.

**Table- 4(Contd.)**  
**GROSS FIXED CAPITAL FORMATION OF PUBLIC SECTOR IN MAHARASHTRA**  
**BY INDUSTRY OF USE AND BY TYPE OF ASSETS**

**YEAR 2008-09**

(At Current Prices)

(₹ Crore)

Sr. No.	INDUSTRY	Buildings	Roads & Bridges	Other Constructions	Plant & Machinery	Transport Equipments	Supra Regional Sector	Total GFCF
(1)	(2)	(3)	(4)	(5)	(6)	(7)	(8)	(9)
1	Agriculture including livestock	0	0	5,251	10	4	0	5,265
2	Forestry and Logging	0	0	21	1	2	0	23
3	Fishing	1	0	2	0	11	0	14
4	Mining and Quarrying	32	0	76	194	4	0	306
5	Manufacturing	531	0	41	1,455	-29	0	1,998
6	Construction	536	0	2,106	133	64	0	2,839
7	Electricity, Gas & Water Supply	1,128	2	337	6,557	12	0	8,037
8	Transport, Railway, Water Transport, Storage & Communication	47	34	104	126	2,629	3,171	6,110
9	Trade, Hotel & Restaurant	10	0	0	82	5	0	97
10	Banking and Insurance	0	0	456	101	0	1,154	1,710
11	Public Administration	1,364	3,256	2,611	705	108	3,793	11,836
12	Other Services	21	13	56	301	9	0	399
<b>Total</b>		<b>3,669</b>	<b>3,305</b>	<b>11,059</b>	<b>9,665</b>	<b>2,818</b>	<b>8,117</b>	<b>38,634</b>

Note : Figures may not add up due to rounding.

**Table- 4(Contd.)**  
**GROSS FIXED CAPITAL FORMATION OF PUBLIC SECTOR IN MAHARASHTRA**  
**BY INDUSTRY OF USE AND BY TYPE OF ASSETS**

**YEAR 2009-10**

(At Current Prices)

(₹ Crore)

Sr. No.	INDUSTRY	Buildings	Roads & Bridges	Other Constructions	Plant & Machinery	Transport Equipments	Supra Regional Sector	Total GFCF
(1)	(2)	(3)	(4)	(5)	(6)	(7)	(8)	(9)
1	Agriculture including livestock	2	1	4,611	122	1	0	4,738
2	Forestry and Logging	0	0	29	1	7	0	37
3	Fishing	0	0	11	1	1	0	13
4	Mining and Quarrying	52	0	119	168	1	0	341
5	Manufacturing	(-)155	0	133	1,191	30	0	1,198
6	Construction	461	0	2,233	117	34	0	2,845
7	Electricity, Gas & Water Supply	1,486	1	1,768	8,059	10	0	11,324
8	Transport, Railway, Water Transport, Storage & Communication	163	17	95	245	4,855	4,067	9,443
9	Trade, Hotel & Restaurant	24	0	2	52	3	0	81
10	Banking and Insurance	0	0	659	126	0	1,149	1,934
11	Public Administration	1,030	5,623	3,062	725	76	4,853	15,370
12	Other Services	492	6	400	184	7	0	1,090
<b>Total</b>		<b>3,555</b>	<b>5,649</b>	<b>13,124</b>	<b>10,991</b>	<b>5,026</b>	<b>10,070</b>	<b>48,414</b>

Note : Figures may not add up due to rounding.

**Table- 4(Contd.)**  
**GROSS FIXED CAPITAL FORMATION OF PUBLIC SECTOR IN MAHARASHTRA**  
**BY INDUSTRY OF USE AND BY TYPE OF ASSETS**

**YEAR 2010-11**

(At Current Prices)

(₹ Crore)

Sr. No.	INDUSTRY	Buildings	Roads & Bridges	Other Constructions	Plant & Machinery	Transport Equipments	Supra Regional Sector	Total GFCF
(1)	(2)	(3)	(4)	(5)	(6)	(7)	(8)	(9)
1	Agriculture including livestock	3	2	5,778	75	2	0	<b>5,860</b>
2	Forestry and Logging	0	0	36	2	2	0	<b>40</b>
3	Fishing	0	0	5	0	1	0	<b>6</b>
4	Mining and Quarrying	37	0	83	157	1	0	<b>278</b>
5	Manufacturing	88	0	59	1,692	18	0	<b>1,856</b>
6	Construction	872	0	2,242	67	0	0	<b>3,182</b>
7	Electricity, Gas & Water Supply	1,103	0	3,063	12,001	442	0	<b>16,609</b>
8	Transport, Railway, Water Transport, Storage & Communication	68	0	3,034	189	2,617	3,164	<b>9,071</b>
9	Trade, Hotel & Restaurant	15	0	23	92	2	0	<b>132</b>
10	Banking and Insurance	0	0	557	113	0	1,911	<b>2,582</b>
11	Public Administration	1,475	5,799	3,259	487	183	6,125	<b>17,326</b>
12	Other Services	854	0	721	78	5	0	<b>1,657</b>
<b>Total</b>		<b>4,515</b>	<b>5,801</b>	<b>18,859</b>	<b>14,952</b>	<b>3,272</b>	<b>11,200</b>	<b>58,599</b>

Note : Figures may not add up due to rounding.

TABLE - 5

**GROSS FIXED CAPITAL FORMATION IN MAHARASHTRA & ALL INDIA  
PUBLIC AND PRIVATE SECTOR  
BY INDUSTRY OF USE**

YEAR 2004-05

(At Current Prices)

(₹ Crore)

Sr. No.	Industry	MAHARASHTRA			ALL INDIA		
		Public	Private	Total	Public	Private	Total
(1)	(2)	(3)	(4)	(5)	(6)	(7)	(8)
1.1	Agriculture including livestock	1,078	6,261	7,339	15,226	52,482	67,708
1.2	Forestry	236	4	240	932	40	972
1.3	Fishing	(-4)	519	515	1	5,976	5,977
<b>A</b>	<b>Agriculture &amp; allied activities</b>	<b>1,310</b>	<b>6,784</b>	<b>8,094</b>	<b>16,159</b>	<b>58,498</b>	<b>74,657</b>
2.1	Mining and Quarrying	189	839	1,028	16,596	19,417	36,013
2.2	Manufacturing	574	33,818	34,392	13,544	2,75,340	2,88,884
2.3	Electricity, Gas & Water Supply	3,555	1,974	5,529	44,673	7,298	51,971
2.4	Construction	2,690	5,068	7,758	7,693	44,368	52,061
<b>B</b>	<b>Industry Sector</b>	<b>7,008</b>	<b>41,699</b>	<b>48,707</b>	<b>82,506</b>	<b>3,46,423</b>	<b>4,28,929</b>
<b>3</b>	<b>Trade, Hotel &amp; Restaurant</b>	<b>101</b>	<b>22,187</b>	<b>22,288</b>	<b>474</b>	<b>54,769</b>	<b>55,243</b>
<b>4</b>	<b>Transport, Storage &amp; Communication</b>	<b>2,385</b>	<b>9,170</b>	<b>11,555</b>	<b>24,834</b>	<b>42,744</b>	<b>67,578</b>
4.1	Railways	677	0	677	12,975	0	12,975
4.2	Transport by other means	546	7,157	7,703	3,372	33,045	36,417
4.3	Storage	34	62	96	55	120	175
4.4	Communication	1,128	1,951	3,079	8,432	9,579	18,011
<b>5</b>	<b>Financing, Insurance, Real estate &amp; Business services</b>	<b>457</b>	<b>19,982</b>	<b>20,439</b>	<b>5,319</b>	<b>1,52,285</b>	<b>1,57,604</b>
5.1	Banking and Insurance	457	566	1,023	3,110	2,796	5,906
5.2	Real Estate, Ownership of Dwellings & Business services	0	19,416	19,416	2,209	1,49,489	1,51,698
<b>6</b>	<b>Community, Social &amp; Personal services</b>	<b>6,242</b>	<b>8,994</b>	<b>15,236</b>	<b>94,816</b>	<b>52,201</b>	<b>1,47,017</b>
6.1	Public Administration	5,435	0	5,435	83,744	0	83,744
6.2	Other Services	807	8,994	9,801	11,072	52,201	63,273
<b>C</b>	<b>Service Sector (Col.3+4+5+6)</b>	<b>9,185</b>	<b>60,333</b>	<b>69,518</b>	<b>1,25,443</b>	<b>3,01,999</b>	<b>4,27,442</b>
	<b>Total</b>	<b>17,503</b>	<b>1,08,816</b>	<b>1,26,319</b>	<b>2,24,108</b>	<b>7,06,920</b>	<b>9,31,028</b>

Note : Figures may not add up due to rounding.

**TABLE -5 (Contd.)**  
**GROSS FIXED CAPITAL FORMATION IN MAHARASHTRA & ALL INDIA**  
**PUBLIC AND PRIVATE SECTOR**  
**BY INDUSTRY OF USE**

YEAR 2005-06

(At Current Prices)

(₹ Crore)

Sr. No.	Industry	MAHARASHTRA			ALL INDIA		
		Public	Private	Total	Public	Private	Total
(1)	(2)	(3)	(4)	(5)	(6)	(7)	(8)
1.1	Agriculture including livestock	2,392	7,219	9,611	18,829	60,094	78,923
1.2	Forestry	59	6	65	1,183	71	1,254
1.3	Fishing	4	598	602	1	6,758	6,759
<b>A</b>	<b>Agriculture &amp; allied activities</b>	<b>2,455</b>	<b>7,823</b>	<b>10,278</b>	<b>20,013</b>	<b>66,922</b>	<b>86,935</b>
2.1	Mining and Quarrying	190	1,379	1,569	20,543	31,752	52,295
2.2	Manufacturing	446	41,219	41,665	15,008	3,30,520	3,45,528
2.3	Electricity, Gas & Water Supply	6,195	2,050	8,245	56,606	7,942	64,548
2.4	Construction	1,544	4,929	6,473	6,305	43,836	50,141
<b>B</b>	<b>Industry Sector</b>	<b>8,375</b>	<b>49,577</b>	<b>57,952</b>	<b>98,462</b>	<b>4,14,050</b>	<b>5,12,512</b>
<b>3</b>	<b>Trade, Hotel &amp; Restaurant</b>	<b>81</b>	<b>14,838</b>	<b>14,919</b>	<b>396</b>	<b>83,486</b>	<b>83,882</b>
<b>4</b>	<b>Transport, Storage &amp; Communication</b>	<b>2,548</b>	<b>7,713</b>	<b>10,261</b>	<b>29,204</b>	<b>53,479</b>	<b>82,683</b>
4.1	Railways	1,625	0	1,625	15,045	0	15,045
4.2	Transport by other means	172	4,724	4,896	5,655	36,637	42,292
4.3	Storage	3	39	42	86	654	740
4.4	Communication	748	2,950	3,698	8,418	16,188	24,606
<b>5</b>	<b>Financing, Insurance, Real estate &amp; Business services</b>	<b>885</b>	<b>17,812</b>	<b>18,697</b>	<b>7,071</b>	<b>1,63,813</b>	<b>1,70,884</b>
5.1	Banking and Insurance	884	633	1,517	4,135	3,758	7,893
5.2	Real Estate, Ownership of Dwellings & Business services	1	17,179	17,180	2,936	1,60,055	1,62,991
<b>6</b>	<b>Community, Social &amp; Personal services</b>	<b>8,893</b>	<b>6,141</b>	<b>15,034</b>	<b>1,16,196</b>	<b>67,200</b>	<b>1,83,396</b>
6.1	Public Administration	8,536	0	8,536	1,03,110	0	1,03,110
6.2	Other Services	357	6,141	6,498	13,086	67,200	80,286
<b>C</b>	<b>Service Sector (Col.3+4+5+6)</b>	<b>12,407</b>	<b>46,504</b>	<b>58,911</b>	<b>1,52,867</b>	<b>3,67,978</b>	<b>5,20,845</b>
<b>Total</b>		<b>23,237</b>	<b>1,03,904</b>	<b>1,27,141</b>	<b>2,71,342</b>	<b>8,48,950</b>	<b>11,20,292</b>

Note : Figures may not add up due to rounding.

**TABLE -5 (Contd.)**  
**GROSS FIXED CAPITAL FORMATION IN MAHARASHTRA & ALL INDIA**  
**PUBLIC AND PRIVATE SECTOR**  
**BY INDUSTRY OF USE**

**YEAR 2006-07**

(At Current Prices)

(₹ Crore)

Sr. No.	Industry	MAHARASHTRA			ALL INDIA		
		Public	Private	Total	Public	Private	Total
(1)	(2)	(3)	(4)	(5)	(6)	(7)	(8)
1.1	Agriculture including livestock	3,191	8,287	11,478	23,936	64,914	88,850
1.2	Forestry	(-6)	5	(-1)	1,508	53	1,561
1.3	Fishing	(-46)	660	614	1	7,602	7,603
<b>A</b>	<b>Agriculture &amp; allied activities</b>	<b>3,139</b>	<b>8,951</b>	<b>12,090</b>	<b>25,445</b>	<b>72,569</b>	<b>98,014</b>
2.1	Mining and Quarrying	221	1,247	1,468	18,361	38,948	57,309
2.2	Manufacturing	1,897	58,146	60,043	24,010	4,23,954	4,47,964
2.3	Electricity, Gas & Water Supply	5,208	2,103	7,311	73,754	8,149	81,903
2.4	Construction	2,148	6,733	8,881	12,584	63,128	75,712
<b>B</b>	<b>Industry Sector</b>	<b>9,474</b>	<b>68,229</b>	<b>77,703</b>	<b>1,28,709</b>	<b>5,34,179</b>	<b>6,62,888</b>
<b>3</b>	<b>Trade, Hotel &amp; Restaurant</b>	<b>85</b>	<b>24,750</b>	<b>24,835</b>	<b>361</b>	<b>97,605</b>	<b>97,966</b>
<b>4</b>	<b>Transport, Storage &amp; Communication</b>	<b>1,933</b>	<b>11,373</b>	<b>13,306</b>	<b>32,902</b>	<b>48,117</b>	<b>81,019</b>
4.1	Railways	891	0	891	18,129	0	18,129
4.2	Transport by other means	117	7,760	7,877	7,912	29,490	37,402
4.3	Storage	7	65	72	192	721	913
4.4	Communication	918	3,548	4,466	6,669	17,906	24,575
<b>5</b>	<b>Financing, Insurance, Real estate &amp; Business services</b>	<b>1,468</b>	<b>22,987</b>	<b>24,455</b>	<b>9,971</b>	<b>1,75,073</b>	<b>1,85,044</b>
5.1	Banking and Insurance	1,468	1,406	2,874	5,094	5,914	11,008
5.2	Real Estate, Ownership of Dwellings & Business services	0	21,581	21,581	4,877	1,69,159	1,74,036
<b>6</b>	<b>Community, Social &amp; Personal services</b>	<b>11,724</b>	<b>9,764</b>	<b>21,488</b>	<b>1,42,229</b>	<b>76,613</b>	<b>2,18,842</b>
6.1	Public Administration	11,363	0	11,363	1,25,874	0	1,25,874
6.2	Other Services	361	9,764	10,125	16,355	76,613	92,968
<b>C</b>	<b>Service Sector (Col.3+4+5+6)</b>	<b>15,210</b>	<b>68,874</b>	<b>84,084</b>	<b>1,85,463</b>	<b>3,97,408</b>	<b>5,82,871</b>
<b>Total</b>		<b>27,823</b>	<b>1,46,054</b>	<b>1,73,877</b>	<b>3,39,617</b>	<b>10,04,158</b>	<b>13,43,775</b>

Note : Figures may not add up due to rounding.

**TABLE -5 (Contd.)**  
**GROSS FIXED CAPITAL FORMATION IN MAHARASHTRA & ALL INDIA**  
**PUBLIC AND PRIVATE SECTOR**  
**BY INDUSTRY OF USE**

**YEAR 2007-08**

(At Current Prices)

(₹ Crore)

Sr. No.	Industry	MAHARASHTRA			ALL INDIA		
		Public	Private	Total	Public	Private	Total
(1)	(2)	(3)	(4)	(5)	(6)	(7)	(8)
1.1	Agriculture including livestock	4,506	11,371	15,877	26,030	82,299	1,08,329
1.2	Forestry	(-)23	3	(-)20	1,319	37	1,356
1.3	Fishing	(-)44	684	640	0	8,758	8,758
<b>A</b>	<b>Agriculture &amp; allied activities</b>	<b>4,439</b>	<b>12,058</b>	<b>16,497</b>	<b>27,349</b>	<b>91,094</b>	<b>1,18,443</b>
2.1	Mining and Quarrying	206	1,644	1,850	23,111	49,983	73,094
2.2	Manufacturing	1,624	68,106	69,730	24,482	5,31,153	5,55,635
2.3	Electricity, Gas & Water Supply	4,689	2,138	6,827	84,425	10,667	95,092
2.4	Construction	2,089	9,400	11,489	13,507	81,707	95,214
<b>B</b>	<b>Industry Sector</b>	<b>8,608</b>	<b>81,288</b>	<b>89,896</b>	<b>1,45,525</b>	<b>6,73,510</b>	<b>8,19,035</b>
<b>3</b>	<b>Trade, Hotel &amp; Restaurant</b>	<b>205</b>	<b>23,643</b>	<b>23,848</b>	<b>243</b>	<b>1,12,539</b>	<b>1,12,782</b>
<b>4</b>	<b>Transport, Storage &amp; Communication</b>	<b>7,010</b>	<b>12,085</b>	<b>19,095</b>	<b>49,204</b>	<b>54,254</b>	<b>1,03,458</b>
4.1	Railways	2,076	0	2,076	21,945	0	21,945
4.2	Transport by other means	4,041	7,443	11,484	19,749	29,049	48,798
4.3	Storage	5	62	67	86	945	1,031
4.4	Communication	888	4,580	5,468	7,424	24,260	31,684
<b>5</b>	<b>Financing, Insurance, Real estate &amp; Business services</b>	<b>1,622</b>	<b>24,766</b>	<b>26,388</b>	<b>10,515</b>	<b>2,07,377</b>	<b>2,17,892</b>
5.1	Banking and Insurance	1,622	1,358	2,980	5,591	7,024	12,615
5.2	Real Estate, Ownership of Dwellings & Business services	0	23,408	23,408	4,924	2,00,353	2,05,277
<b>6</b>	<b>Community, Social &amp; Personal services</b>	<b>13,087</b>	<b>9,186</b>	<b>22,273</b>	<b>1,68,490</b>	<b>1,01,574</b>	<b>2,70,064</b>
6.1	Public Administration	12,680	0	12,680	1,50,020	0	1,50,020
6.2	Other Services	407	9,186	9,593	18,470	1,01,574	1,20,044
<b>C</b>	<b>Service Sector (Col.3+4+5+6)</b>	<b>21,924</b>	<b>69,680</b>	<b>91,604</b>	<b>2,28,452</b>	<b>4,75,744</b>	<b>7,04,196</b>
	<b>Total</b>	<b>34,971</b>	<b>1,63,026</b>	<b>1,97,997</b>	<b>4,01,326</b>	<b>12,40,347</b>	<b>16,41,673</b>

Note : Figures may not add up due to rounding.

**TABLE -5 (Contd.)**  
**GROSS FIXED CAPITAL FORMATION IN MAHARASHTRA & ALL INDIA**  
**PUBLIC AND PRIVATE SECTOR**  
**BY INDUSTRY OF USE**

**YEAR 2008-09**

(At Current Prices)

(₹ Crore)

Sr. No.	Industry	MAHARASHTRA			ALL INDIA		
		Public	Private	Total	Public	Private	Total
(1)	(2)	(3)	(4)	(5)	(6)	(7)	(8)
1.1	Agriculture including livestock	5,265	13,610	18,875	24,913	1,17,377	1,42,290
1.2	Forestry	23	9	32	1,267	98	1,365
1.3	Fishing	14	710	724	4	10,341	10,345
<b>A</b>	<b>Agriculture &amp; allied activities</b>	<b>5,302</b>	<b>14,330</b>	<b>19,632</b>	<b>26,184</b>	<b>1,27,816</b>	<b>1,54,000</b>
2.1	Mining and Quarrying	306	1,406	1,712	34,080	35,547	69,627
2.2	Manufacturing	1,998	59,396	61,394	38,949	4,15,249	4,54,198
2.3	Electricity, Gas & Water Supply	8,037	2,942	10,979	1,00,436	15,069	1,15,505
2.4	Construction	2,839	8,128	10,967	16,146	69,815	85,961
<b>B</b>	<b>Industry Sector</b>	<b>13,180</b>	<b>71,872</b>	<b>85,052</b>	<b>1,89,611</b>	<b>5,35,680</b>	<b>7,25,291</b>
<b>3</b>	<b>Trade, Hotel &amp; Restaurant</b>	<b>97</b>	<b>24,003</b>	<b>24,100</b>	<b>319</b>	<b>1,43,534</b>	<b>1,43,853</b>
<b>4</b>	<b>Transport, Storage &amp; Communication</b>	<b>6,110</b>	<b>17,102</b>	<b>23,212</b>	<b>57,496</b>	<b>1,12,315</b>	<b>1,69,811</b>
4.1	Railways	1,858	0	1,858	29,407	0	29,407
4.2	Transport by other means	2,931	8,221	11,152	16,690	51,868	68,558
4.3	Storage	8	74	82	59	1,778	1,837
4.4	Communication	1,313	8,807	10,120	11,340	58,669	70,009
<b>5</b>	<b>Financing, Insurance, Real estate &amp; Business services</b>	<b>1,710</b>	<b>32,584</b>	<b>34,294</b>	<b>12,369</b>	<b>3,25,175</b>	<b>3,37,544</b>
5.1	Banking and Insurance	1,710	1,137	2,847	5,530	3,984	9,514
5.2	Real Estate, Ownership of Dwellings & Business services	0	31,447	31,447	6,839	3,21,191	3,28,030
<b>6</b>	<b>Community, Social &amp; Personal services</b>	<b>12,235</b>	<b>10,060</b>	<b>22,295</b>	<b>1,94,718</b>	<b>95,882</b>	<b>2,90,600</b>
6.1	Public Administration	11,836	0	11,836	1,73,978	0	1,73,978
6.2	Other Services	399	10,060	10,459	20,740	95,882	1,16,622
<b>C</b>	<b>Service Sector (Col.3+4+5+6)</b>	<b>20,152</b>	<b>83,749</b>	<b>1,03,901</b>	<b>2,64,902</b>	<b>6,76,906</b>	<b>9,41,808</b>
	<b>Total</b>	<b>38,634</b>	<b>1,69,951</b>	<b>2,08,585</b>	<b>4,80,697</b>	<b>13,40,402</b>	<b>18,21,099</b>

Note : Figures may not add up due to rounding.

**TABLE -5 (Contd.)**  
**GROSS FIXED CAPITAL FORMATION IN MAHARASHTRA & ALL INDIA**  
**PUBLIC AND PRIVATE SECTOR**  
**BY INDUSTRY OF USE**

**YEAR 2009-10**

(At Current Prices)

(₹ Crore)

Sr. No.	Industry	MAHARASHTRA			ALL INDIA		
		Public	Private	Total	Public	Private	Total
(1)	(2)	(3)	(4)	(5)	(6)	(7)	(8)
1.1	Agriculture including livestock	4,738	16,282	21,020	31,582	1,31,140	1,62,722
1.2	Forestry	37	9	46	1,613	101	1,714
1.3	Fishing	13	810	823	5	11,764	11,769
<b>A</b>	<b>Agriculture &amp; allied activities</b>	<b>4,788</b>	<b>17,101</b>	<b>21,889</b>	<b>33,200</b>	<b>1,43,005</b>	<b>1,76,205</b>
2.1	Mining and Quarrying	341	1,603	1,944	33,110	42,609	75,719
2.2	Manufacturing	1,198	47,025	48,223	51,580	5,13,203	5,64,783
2.3	Electricity, Gas & Water Supply	11,324	3,437	14,761	1,13,256	21,080	1,34,336
2.4	Construction	2,845	8,233	11,078	13,667	74,030	87,697
<b>B</b>	<b>Industry Sector</b>	<b>15,708</b>	<b>60,298</b>	<b>76,006</b>	<b>2,11,613</b>	<b>6,50,922</b>	<b>8,62,535</b>
<b>3</b>	<b>Trade, Hotel &amp; Restaurant</b>	<b>81</b>	<b>29,383</b>	<b>29,464</b>	<b>376</b>	<b>1,68,150</b>	<b>1,68,526</b>
<b>4</b>	<b>Transport, Storage &amp; Communication</b>	<b>9,443</b>	<b>22,999</b>	<b>32,442</b>	<b>60,006</b>	<b>1,25,485</b>	<b>1,85,491</b>
4.1	Railways	2,017	0	2,017	31,447	0	31,447
4.2	Transport by other means	5,353	10,178	15,531	15,637	52,835	68,472
4.3	Storage	23	101	124	151	1,756	1,907
4.4	Communication	2,050	12,720	14,770	12,771	70,894	83,665
<b>5</b>	<b>Financing, Insurance, Real estate &amp; Business services</b>	<b>1,934</b>	<b>36,637</b>	<b>38,571</b>	<b>11,261</b>	<b>3,24,822</b>	<b>3,36,083</b>
5.1	Banking and Insurance	1,934	1,174	3,108	6,454	3,573	10,027
5.2	Real Estate, Ownership of Dwellings & Business services	0	35,463	35,463	4,807	3,21,249	3,26,056
<b>6</b>	<b>Community, Social &amp; Personal services</b>	<b>16,460</b>	<b>13,123</b>	<b>29,583</b>	<b>2,27,428</b>	<b>99,504</b>	<b>3,26,932</b>
6.1	Public Administration	15,370	0	15,370	2,01,278	0	2,01,278
6.2	Other Services	1,090	13,123	14,213	26,150	99,504	1,25,654
<b>C</b>	<b>Service Sector (Col.3+4+5+6)</b>	<b>27,918</b>	<b>1,02,142</b>	<b>1,30,060</b>	<b>2,99,071</b>	<b>7,17,961</b>	<b>10,17,032</b>
<b>Total</b>		<b>48,414</b>	<b>1,79,541</b>	<b>2,27,955</b>	<b>5,43,884</b>	<b>15,11,888</b>	<b>20,55,772</b>

Note : Figures may not add up due to rounding.

**TABLE -5 (Contd.)**  
**GROSS FIXED CAPITAL FORMATION IN MAHARASHTRA & ALL INDIA**  
**PUBLIC AND PRIVATE SECTOR**  
**BY INDUSTRY OF USE**

**YEAR 2010-11**

(At Current Prices)

(₹ Crore)

Sr. No.	Industry	MAHARASHTRA			ALL INDIA		
		Public	Private	Total	Public	Private	Total
(1)	(2)	(3)	(4)	(5)	(6)	(7)	(8)
1.1	Agriculture including livestock	5,860	19,461	25,321	30,146	1,37,792	1,67,938
1.2	Forestry	40	7	47	1,544	77	1,621
1.3	Fishing	6	977	983	4	13,504	13,508
<b>A</b>	<b>Agriculture &amp; allied activities</b>	<b>5,906</b>	<b>20,445</b>	<b>26,351</b>	<b>31,694</b>	<b>1,51,373</b>	<b>1,83,067</b>
2.1	Mining and Quarrying	278	1,533	1,811	38,720	57,207	95,927
2.2	Manufacturing	1,856	68,048	69,904	52,248	6,43,038	6,95,286
2.3	Electricity, Gas & Water Supply	16,608	6,175	22,783	1,31,268	37,385	1,68,653
2.4	Construction	3,182	11,340	14,522	17,489	1,02,885	1,20,374
<b>B</b>	<b>Industry Sector</b>	<b>21,924</b>	<b>87,096</b>	<b>1,09,020</b>	<b>2,39,725</b>	<b>8,40,515</b>	<b>10,80,240</b>
<b>3</b>	<b>Trade, Hotel &amp; Restaurant</b>	<b>132</b>	<b>42,086</b>	<b>42,218</b>	<b>361</b>	<b>2,42,963</b>	<b>2,43,324</b>
<b>4</b>	<b>Transport, Storage &amp; Communication</b>	<b>9,072</b>	<b>28,927</b>	<b>37,999</b>	<b>53,406</b>	<b>1,33,192</b>	<b>1,86,598</b>
4.1	Railways	1,838	0	1,838	31,148	0	31,148
4.2	Transport by other means	5,883	14,354	20,237	13,870	59,061	72,931
4.3	Storage	25	125	150	231	1,798	2,029
4.4	Communication	1,326	14,448	15,774	8,157	72,333	80,490
<b>5</b>	<b>Financing, Insurance, Real estate &amp; Business services</b>	<b>2,582</b>	<b>49,152</b>	<b>51,734</b>	<b>15,913</b>	<b>3,74,444</b>	<b>3,90,357</b>
5.1	Banking and Insurance	2,582	2,663	5,245	7,955	8,953	16,908
5.2	Real Estate, Ownership of Dwellings & Business services	0	46,489	46,489	7,958	3,65,491	3,73,449
<b>6</b>	<b>Community, Social &amp; Personal services</b>	<b>18,983</b>	<b>19,555</b>	<b>38,538</b>	<b>2,65,143</b>	<b>1,25,735</b>	<b>3,90,878</b>
6.1	Public Administration	17,326	0	17,326	2,38,184	0	2,38,184
6.2	Other Services	1,657	19,555	21,212	26,959	1,25,735	1,52,694
<b>C</b>	<b>Service Sector (Col.3+4+5+6)</b>	<b>30,769</b>	<b>1,39,720</b>	<b>1,70,489</b>	<b>3,34,823</b>	<b>8,76,334</b>	<b>12,11,157</b>
<b>Total</b>		<b>58,599</b>	<b>2,47,261</b>	<b>3,05,860</b>	<b>6,06,242</b>	<b>18,68,222</b>	<b>24,74,464</b>

Note : Figures may not add up due to rounding.

**TABLE – 6****GROSS FIXED CAPITAL FORMATION (GFCF) AND GROSS STATE DOMESTIC PRODUCT (GSDP)  
BY BROAD SECTORS****YEAR 2004-05 TO 2010-11**

(At Current Prices)

(₹ Crore)

Sr. No.	Year	Gross Fixed Capital Formation				Gross State Domestic Product			
		Agriculture	Industry	Service	Total	Agriculture	Industry	Service	Total
1	2004-05	8,094	48,707	69,518	1,26,319	44,927	1,23,022	2,47,531	4,15,480
2	2005-06	10,278	57,952	58,911	1,27,141	52,764	1,54,683	2,79,318	4,86,766
3	2006-07	12,090	77,703	84,084	1,73,877	67,229	1,86,926	3,30,342	5,84,498
4	2007-08	16,497	89,896	91,604	1,97,997	80,684	2,21,556	3,82,576	6,84,817
5	2008-09	19,632	85,052	1,03,901	2,08,585	75,833	2,36,090	4,42,047	7,53,969
6	2009-10	21,889	76,006	1,30,060	2,27,955	88,578	2,55,108	5,12,065	8,55,751
7	2010-11	26,351	1,09,020	1,70,489	3,05,860	1,29,336	3,11,591	6,08,223	10,49,150

Note : Figures may not add up due to rounding.

**TABLE – 7****GFCF AS PERCENTAGE TO GSDP BY BROAD SECTORS****YEAR 2004-05 TO 2010-11**

(At Current Prices)

(Per cent)

Sr.No.	Year	Gross Fixed Capital Formation			
		Agriculture	Industry	Service	Total
1	2004-05	18.02	39.59	28.08	30.40
2	2005-06	19.48	37.46	21.09	26.12
3	2006-07	17.98	41.57	25.45	29.75
4	2007-08	20.45	40.57	23.94	28.91
5	2008-09	25.89	36.03	23.50	27.66
6	2009-10	24.71	29.79	25.40	26.64
7	2010-11	20.37	34.99	28.03	29.15

Note : Figures may not add up due to rounding.

# **PART - IV**

## **GFCF**

Anex.I - Dept.Enterprises

Anex.II - Non -Dept.Enterprises

Anex.III - Local Bodies

Anex.IV - Supra Regional Sector

Anex.V - Methodology for Pvt. Sector

**ANNEXURE - I**

**GROSS FIXED CAPITAL FORMATION OF "DEPARTMENTAL ENTERPRISES (DEs)"  
BY INDUSTRY OF USE AND BY TYPE OF ASSETS**

**YEAR 2004-05**

(At Current Prices)

(₹ Crore)

Sr. No.	Industry	Buildings	Roads & Bridges	Other Constructions	Plant & Machinery	Transport	Total GFCF
(1)	(2)	(3)	(4)	(5)	(6)	(7)	(8)
1	Agriculture including livestock	2	0	30	11	13	55
2	Forestry and Logging	0	0	181	0	1	181
3	Fishing	0	0	0	0	0	0
4	Mining and Quarrying	0	0	0	0	0	0
5	Manufacturing	0	0	0	0	0	0
6	Construction	0	0	0	0	0	0
7	Electricity, Gas & Water Supply	0	0	0	0	0	0
8	Transport, Storage & Communication	3	3	249	39	7	301
9	Trade, Hotel & Restaurant	0	0	0	0	0	0
10	Banking and Insurance	0	0	69	70	0	139
11	Public Administration	0	0	0	0	0	0
12	Other Services	1	3	29	37	2	71
<b>Total</b>		<b>6</b>	<b>6</b>	<b>557</b>	<b>157</b>	<b>22</b>	<b>748</b>

Note : Figures may not add up due to rounding.

**ANNEXURE - I (Contd.)**

**GROSS FIXED CAPITAL FORMATION OF "DEPARTMENTAL ENTERPRISES (DEs)"  
BY INDUSTRY OF USE AND BY TYPE OF ASSETS**

**YEAR 2005-06**

(At Current Prices)

(₹ Crore)

Sr. No.	Industry	Buildings	Roads & Bridges	Other Constructions	Plant & Machinery	Transport	Total GFCF
(1)	(2)	(3)	(4)	(5)	(6)	(7)	(8)
1	Agriculture including livestock	1	0	410	14	1	426
2	Forestry and Logging	0	0	1	0	2	3
3	Fishing	0	0	0	0	0	0
4	Mining and Quarrying	0	0	0	0	0	0
5	Manufacturing	0	0	0	2	10	12
6	Construction	0	0	0	0	0	0
7	Electricity, Gas & Water Supply	1	0	0	1	0	2
8	Transport, Storage & Communication	1	1	3	24	32	61
9	Trade, Hotel & Restaurant	0	0	0	0	0	0
10	Banking and Insurance	0	0	82	104	0	186
11	Public Administration	0	0	0	0	0	0
12	Other Services	3	1	27	32	1	65
<b>Total</b>		<b>5</b>	<b>2</b>	<b>523</b>	<b>177</b>	<b>46</b>	<b>755</b>

Note : Figures may not add up due to rounding.

**ANNEXURE - I** (Contd.)

**GROSS FIXED CAPITAL FORMATION OF "DEPARTMENTAL ENTERPRISES (DEs)"  
BY INDUSTRY OF USE AND BY TYPE OF ASSETS**

**YEAR 2006-07**

(At Current Prices)

(₹ Crore)

Sr. No.	Industry	Buildings	Roads & Bridges	Other Constructions	Plant & Machinery	Transport	Total GFCF
(1)	(2)	(3)	(4)	(5)	(6)	(7)	(8)
1	Agriculture including livestock	2	0	692	9	0	<b>703</b>
2	Forestry and Logging	0	0	0	0	0	<b>0</b>
3	Fishing	0	0	0	0	0	<b>0</b>
4	Mining and Quarrying	0	0	0	0	0	<b>0</b>
5	Manufacturing	14	0	11	1	17	<b>43</b>
6	Construction	0	0	0	0	0	<b>0</b>
7	Electricity, Gas & Water Supply	0	0	0	0	0	<b>0</b>
8	Transport, Storage & Communication	4	30	40	48	0	<b>122</b>
9	Trade, Hotel & Restaurant	0	0	0	0	0	<b>0</b>
10	Banking and Insurance	0	0	94	79	0	<b>173</b>
11	Public Administration	0	0	0	0	0	<b>0</b>
12	Other Services	0	0	0	0	0	<b>0</b>
	<b>Total</b>	<b>19</b>	<b>30</b>	<b>837</b>	<b>138</b>	<b>18</b>	<b>1,041</b>

Note : Figures may not add up due to rounding.

**ANNEXURE - I** (Contd.)

**GROSS FIXED CAPITAL FORMATION OF "DEPARTMENTAL ENTERPRISES (DEs)"  
BY INDUSTRY OF USE AND BY TYPE OF ASSETS**

**YEAR 2007-08**

(At Current Prices)

(₹ Crore)

Sr. No.	Industry	Buildings	Roads & Bridges	Other Constructions	Plant & Machinery	Transport	Total GFCF
(1)	(2)	(3)	(4)	(5)	(6)	(7)	(8)
1	Agriculture including livestock	0	0	490	15	0	<b>506</b>
2	Forestry and Logging	0	0	0	0	1	<b>1</b>
3	Fishing	0	0	0	0	0	<b>0</b>
4	Mining and Quarrying	0	0	0	0	0	<b>0</b>
5	Manufacturing	9	0	0	2	14	<b>25</b>
6	Construction	0	0	0	0	0	<b>0</b>
7	Electricity, Gas & Water Supply	0	0	0	0	0	<b>0</b>
8	Transport, Storage & Communication	1	32	42	55	-2	<b>129</b>
9	Trade, Hotel & Restaurant	0	0	0	0	0	<b>0</b>
10	Banking and Insurance	0	0	408	79	0	<b>487</b>
11	Public Administration	0	0	0	0	0	<b>0</b>
12	Other Services	0	0	0	0	0	<b>0</b>
	<b>Total</b>	<b>10</b>	<b>32</b>	<b>940</b>	<b>152</b>	<b>14</b>	<b>1,148</b>

Note : Figures may not add up due to rounding.

**ANNEXURE - I** (Contd.)**GROSS FIXED CAPITAL FORMATION OF "DEPARTMENTAL ENTERPRISES (DEs)"  
BY INDUSTRY OF USE AND BY TYPE OF ASSETS****YEAR 2008-09**

(At Current Prices)

(₹ Crore)

Sr. No.	Industry	Buildings	Roads & Bridges	Other Constructions	Plant & Machinery	Transport	Total GFCF
(1)	(2)	(3)	(4)	(5)	(6)	(7)	(8)
1	Agriculture including livestock	0	0	497	8	2	<b>507</b>
2	Forestry and Logging	0	0	0	0	1	<b>1</b>
3	Fishing	0	0	0	0	0	<b>0</b>
4	Mining and Quarrying	0	0	0	0	0	<b>0</b>
5	Manufacturing	12	0	0	2	15	<b>29</b>
6	Construction	0	0	0	0	0	<b>0</b>
7	Electricity, Gas & Water Supply	0	0	0	0	0	<b>0</b>
8	Transport, Storage & Communication	1	34	47	57	(-3)	<b>136</b>
9	Trade, Hotel & Restaurant	0	0	0	0	0	<b>0</b>
10	Banking and Insurance	0	0	456	101	0	<b>557</b>
11	Public Administration	0	0	0	0	0	<b>0</b>
12	Other Services	0	0	0	0	0	<b>0</b>
<b>Total</b>		<b>13</b>	<b>34</b>	<b>1,000</b>	<b>168</b>	<b>15</b>	<b>1,230</b>

Note : Figures may not add up due to rounding.

**ANNEXURE - I** (Contd.)**GROSS FIXED CAPITAL FORMATION OF "DEPARTMENTAL ENTERPRISES (DEs)"  
BY INDUSTRY OF USE AND BY TYPE OF ASSETS****YEAR 2009-10**

(At Current Prices)

(₹ Crore)

Sr. No.	Industry	Buildings	Roads & Bridges	Other Constructions	Plant & Machinery	Transport	Total GFCF
(1)	(2)	(3)	(4)	(5)	(6)	(7)	(8)
1	Agriculture including livestock	0	1	716	11	1	<b>728</b>
2	Forestry and Logging	0	0	0	0	6	<b>7</b>
3	Fishing	0	0	0	0	0	<b>0</b>
4	Mining and Quarrying	0	0	0	0	0	<b>0</b>
5	Manufacturing	0	0	0	1	12	<b>13</b>
6	Construction	0	0	0	0	0	<b>0</b>
7	Electricity, Gas & Water Supply	0	0	0	0	0	<b>0</b>
8	Transport, Storage & Communication	1	17	34	134	88	<b>275</b>
9	Trade, Hotel & Restaurant	0	0	0	0	0	<b>0</b>
10	Banking and Insurance	0	0	659	126	0	<b>785</b>
11	Public Administration	0	0	0	0	0	<b>0</b>
12	Other Services	0	0	0	0	0	<b>0</b>
<b>Total</b>		<b>1</b>	<b>19</b>	<b>1,409</b>	<b>272</b>	<b>107</b>	<b>1,808</b>

Note : Figures may not add up due to rounding.

**ANNEXURE - I** (Contd.)**GROSS FIXED CAPITAL FORMATION OF "DEPARTMENTAL ENTERPRISES"  
BY INDUSTRY OF USE AND BY TYPE OF ASSETS****YEAR 2010-11**

(At Current Prices)

(₹ Crore)

<b>Sr. No.</b>	<b>Industry</b>	<b>Buildings</b>	<b>Roads &amp; Bridges</b>	<b>Other Constructions</b>	<b>Plant &amp; Machinery</b>	<b>Transport</b>	<b>Total GFCF</b>
(1)	(2)	(3)	(4)	(5)	(6)	(7)	(8)
1	Agriculture including livestock	0	2	757	8	1	<b>768</b>
2	Forestry and Logging	0	0	0	2	2	<b>4</b>
3	Fishing	0	0	0	0	0	<b>0</b>
4	Mining and Quarrying	0	0	0	0	0	<b>0</b>
5	Manufacturing	0	0	0	1	12	<b>13</b>
6	Construction	0	0	0	0	0	<b>0</b>
7	Electricity, Gas & Water Supply	0	0	0	0	0	<b>0</b>
8	Transport, Storage & Communication	1	0	18	4	176	<b>199</b>
9	Trade, Hotel & Restaurant	0	0	0	0	0	<b>0</b>
10	Banking and Insurance	0	0	557	113	0	<b>670</b>
11	Public Administration	0	0	0	0	0	<b>0</b>
12	Other Services	0	0	1	0	0	<b>1</b>
<b>Total</b>		<b>1</b>	<b>2</b>	<b>1,333</b>	<b>128</b>	<b>190</b>	<b>1,655</b>

Note : Figures may not add up due to rounding.

**ANNEXURE - II**

**GROSS FIXED CAPITAL FORMATION OF "NON-DEPARTMENTAL ENTERPRISES (NDEs)"  
BY INDUSTRY OF USE AND BY TYPE OF ASSETS**

**YEAR 2004-05**

(At Current Prices)

(₹ Crore)

Sr. No.	Industry	Buildings	Roads & Bridges	Other Constructions	Plant & Machinery	Transport	Total GFCF
(1)	(2)	(3)	(4)	(5)	(6)	(7)	(8)
1	Agriculture including livestock	1	0	1,004	19	0	<b>1,023</b>
2	Forestry and Logging	0	0	55	0	0	<b>55</b>
3	Fishing	0	0	0	(-4)	0	<b>(-4)</b>
4	Mining and Quarrying	19	0	2	119	50	<b>189</b>
5	Manufacturing	56	0	17	492	9	<b>574</b>
6	Construction	(-269)	0	1,220	4	1,584	<b>2,539</b>
7	Electricity, Gas & Water Supply	112	0	576	892	1,641	<b>3,221</b>
8	Transport, Storage & Communication	(-11)	0	20	84	187	<b>279</b>
9	Trade, Hotel & Restaurant	(-23)	0	4	115	6	<b>101</b>
10	Banking and Insurance	1	0	0	51	0	<b>52</b>
11	Public Administration	1	0	48	0	13	<b>62</b>
12	Other Services	6	0	0	5	2	<b>13</b>
	<b>Total</b>	<b>(-110)</b>	<b>0</b>	<b>2,946</b>	<b>1,776</b>	<b>3,491</b>	<b>8,103</b>

Note : Figures may not add up due to rounding.

**ANNEXURE - II (Contd.)**

**GROSS FIXED CAPITAL FORMATION OF "NON-DEPARTMENTAL ENTERPRISES (NDEs)"  
BY INDUSTRY OF USE AND BY TYPE OF ASSETS**

**YEAR 2005-06**

(At Current Prices)

(₹ Crore)

Sr. No.	Industry	Buildings	Roads & Bridges	Other Constructions	Plant & Machinery	Transport	Total GFCF
(1)	(2)	(3)	(4)	(5)	(6)	(7)	(8)
1	Agriculture including livestock	0	0	1,329	1	635	<b>1,966</b>
2	Forestry and Logging	0	0	56	0	0	<b>56</b>
3	Fishing	0	0	0	1	3	<b>4</b>
4	Mining and Quarrying	18	0	37	134	1	<b>190</b>
5	Manufacturing	99	0	24	305	6	<b>434</b>
6	Construction	(-322)	0	1,414	4	292	<b>1,388</b>
7	Electricity, Gas & Water Supply	196	0	664	3,842	1,301	<b>6,003</b>
8	Transport, Storage & Communication	14	0	49	62	(-11)	<b>113</b>
9	Trade, Hotel & Restaurant	24	0	1	50	6	<b>81</b>
10	Banking and Insurance	0	0	0	0	0	<b>0</b>
11	Public Administration	(-13)	0	48	0	13	<b>48</b>
12	Other Services	6	0	(-1)	4	1	<b>10</b>
	<b>Total</b>	<b>22</b>	<b>0</b>	<b>3,621</b>	<b>4,402</b>	<b>2,248</b>	<b>10,294</b>

Note : Figures may not add up due to rounding.

**ANNEXURE - II** (Contd.)**GROSS FIXED CAPITAL FORMATION OF "NON-DEPARTMENTAL ENTERPRISES (NDEs)"  
BY INDUSTRY OF USE AND BY TYPE OF ASSETS****YEAR 2006-07**

(At Current Prices)

(₹ Crore)

Sr. No.	Industry	Buildings	Roads & Bridges	Other Constructions	Plant & Machinery	Transport	Total GFCF
(1)	(2)	(3)	(4)	(5)	(6)	(7)	(8)
1	Agriculture including livestock	1	0	2,074	3	410	<b>2,488</b>
2	Forestry and Logging	0	0	(-7)	0	0	(-7)
3	Fishing	(-1)	0	(-38)	(-3)	(-4)	(-46)
4	Mining and Quarrying	31	0	75	116	0	<b>221</b>
5	Manufacturing	70	0	283	1,494	7	<b>1,854</b>
6	Construction	248	0	1,149	6	429	<b>1,832</b>
7	Electricity, Gas & Water Supply	18	0	596	3,747	668	<b>5,030</b>
8	Transport, Storage & Communication	9	0	54	89	(-150)	<b>2</b>
9	Trade, Hotel & Restaurant	25	0	1	52	7	<b>85</b>
10	Banking and Insurance	0	0	0	0	0	<b>0</b>
11	Public Administration	0	0	48	0	13	<b>61</b>
12	Other Services	6	0	(-1)	1	0	<b>6</b>
	<b>Total</b>	<b>408</b>	<b>0</b>	<b>4,233</b>	<b>5,506</b>	<b>1,380</b>	<b>11,526</b>

Note : Figures may not add up due to rounding.

**ANNEXURE - II** (Contd.)**GROSS FIXED CAPITAL FORMATION OF "NON-DEPARTMENTAL ENTERPRISES (NDEs)"  
BY INDUSTRY OF USE AND BY TYPE OF ASSETS****YEAR 2007-08**

(At Current Prices)

(₹ Crore)

Sr. No.	Industry	Buildings	Roads & Bridges	Other Constructions	Plant & Machinery	Transport	Total GFCF
(1)	(2)	(3)	(4)	(5)	(6)	(7)	(8)
1	Agriculture including livestock	0	0	3,432	2	565	<b>4,000</b>
2	Forestry and Logging	0	0	(-25)	0	0	(-24)
3	Fishing	(-1)	0	(-45)	2	1	(-44)
4	Mining and Quarrying	37	0	52	116	0	<b>206</b>
5	Manufacturing	58	0	95	1,440	6	<b>1,600</b>
6	Construction	1,006	0	581	9	297	<b>1,893</b>
7	Electricity, Gas & Water Supply	116	0	314	3,052	1,023	<b>4,505</b>
8	Transport, Storage & Communication	13	0	58	77	3,768	<b>3,916</b>
9	Trade, Hotel & Restaurant	48	0	50	102	5	<b>205</b>
10	Banking and Insurance	0	0	0	0	0	<b>0</b>
11	Public Administration	0	0	48	0	13	<b>61</b>
12	Other Services	3	0	(-1)	1	(-7)	(-4)
	<b>Total</b>	<b>1,279</b>	<b>0</b>	<b>4,560</b>	<b>4,802</b>	<b>5,672</b>	<b>16,313</b>

Note : Figures may not add up due to rounding.

**ANNEXURE - II** (Contd.)**GROSS FIXED CAPITAL FORMATION OF "NON-DEPARTMENTAL ENTERPRISES (NDEs)"  
BY INDUSTRY OF USE AND BY TYPE OF ASSETS****YEAR 2008-09**

(At Current Prices)

(₹ Crore)

Sr. No.	Industry	Buildings	Roads & Bridges	Other Constructions	Plant & Machinery	Transport	Total GFCF
(1)	(2)	(3)	(4)	(5)	(6)	(7)	(8)
1	Agriculture including livestock	0	0	4,754	2	2	<b>4,758</b>
2	Forestry and Logging	0	0	21	0	1	<b>22</b>
3	Fishing	1	0	2	0	11	<b>14</b>
4	Mining and Quarrying	32	0	76	194	4	<b>306</b>
5	Manufacturing	520	0	41	1,453	(-44)	<b>1,969</b>
6	Construction	367	0	1,937	11	309	<b>2,625</b>
7	Electricity, Gas & Water Supply	229	0	155	3,854	3,588	<b>7,826</b>
8	Transport, Storage & Communication	49	0	57	69	2,628	<b>2,804</b>
9	Trade, Hotel & Restaurant	10	0	0	82	5	<b>97</b>
10	Banking and Insurance	0	0	0	0	0	<b>0</b>
11	Public Administration	0	0	93	0	148	<b>241</b>
12	Other Services	(-1)	0	(-1)	(-3)	(-2)	<b>(-8)</b>
	<b>Total</b>	<b>1,206</b>	<b>0</b>	<b>7,134</b>	<b>5,664</b>	<b>6,650</b>	<b>20,653</b>

Note : Figures may not add up due to rounding.

**ANNEXURE - II** (Contd.)**GROSS FIXED CAPITAL FORMATION OF "NON-DEPARTMENTAL ENTERPRISES (NDEs)"  
BY INDUSTRY OF USE AND BY TYPE OF ASSETS****YEAR 2009-10**

(At Current Prices)

(₹ Crore)

Sr. No.	Industry	Buildings	Roads & Bridges	Other Constructions	Plant & Machinery	Transport	Total GFCF
(1)	(2)	(3)	(4)	(5)	(6)	(7)	(8)
1	Agriculture including livestock	2	0	3,896	111	1	<b>4,010</b>
2	Forestry and Logging	0	0	29	0	0	<b>30</b>
3	Fishing	0	0	11	1	1	<b>13</b>
4	Mining and Quarrying	24	0	33	168	116	<b>341</b>
5	Manufacturing	(-155)	0	133	1,190	18	<b>1,185</b>
6	Construction	334	0	2,106	6	241	<b>2,686</b>
7	Electricity, Gas & Water Supply	22	0	194	3,655	5,850	<b>9,722</b>
8	Transport, Storage & Communication	129	0	61	111	4,800	<b>5,101</b>
9	Trade, Hotel & Restaurant	24	0	2	51	5	<b>81</b>
10	Banking and Insurance	0	0	0	0	0	<b>0</b>
11	Public Administration	0	0	93	1	148	<b>242</b>
12	Other Services	1	0	(-1)	1	0	<b>1</b>
	<b>Total</b>	<b>380</b>	<b>0</b>	<b>6,557</b>	<b>5,296</b>	<b>11,180</b>	<b>23,413</b>

Note : Figures may not add up due to rounding.

**ANNEXURE - II** (Contd.)**GROSS FIXED CAPITAL FORMATION OF "NON-DEPARTMENTAL ENTERPRISES (NDEs)"  
BY INDUSTRY OF USE AND BY TYPE OF ASSETS****YEAR 2010-11**

(At Current Prices)

(₹ Crore)

<b>Sr. No.</b>	<b>Industry</b>	<b>Buildings</b>	<b>Roads &amp; Bridges</b>	<b>Other Constructions</b>	<b>Plant &amp; Machinery</b>	<b>Transport</b>	<b>Total GFCF</b>
(1)	(2)	(3)	(4)	(5)	(6)	(7)	(8)
1	Agriculture including livestock	3	0	5,021	67	2	<b>5,092</b>
2	Forestry and Logging	0	0	36	0	0	<b>36</b>
3	Fishing	0	0	5	0	1	<b>6</b>
4	Mining and Quarrying	12	0	7	157	101	<b>278</b>
5	Manufacturing	65	0	59	1,624	95	<b>1,843</b>
6	Construction	644	0	2,014	13	457	<b>3,128</b>
7	Electricity, Gas & Water Supply	109	0	278	8,995	4,414	<b>13,797</b>
8	Transport, Storage & Communication	55	0	3,015	185	2,453	<b>5,709</b>
9	Trade, Hotel & Restaurant	15	0	23	92	2	<b>132</b>
10	Banking and Insurance	0	0	0	0	0	<b>0</b>
11	Public Administration	0	0	93	1	148	<b>242</b>
12	Other Services	1	0	(-1)	3	2	<b>5</b>
	<b>Total</b>	<b>905</b>	<b>0</b>	<b>10,552</b>	<b>11,137</b>	<b>7,675</b>	<b>30,268</b>

Note : Figures may not add up due to rounding.

**ANNEXURE - III****GROSS FIXED CAPITAL FORMATION OF "LOCAL BODIES"  
BY INDUSTRY OF USE AND BY TYPE OF ASSETS****YEAR : 2004-05**

(At Current Prices)

(₹ Crore)

Industry	Buildings	Roads & Bridges	Other Constructions	Transport	Machinery	Total
(1)	(2)	(3)	(4)	(5)	(6)	(7)
Administration	78	230	174	(-30)	25	<b>477</b>
Construction	0	0	0	14	13	<b>26</b>
Water Supply	7	4	291	7	16	<b>324</b>
Other Services	(-10)	16	99	6	4	<b>116</b>
<b>Total</b>	<b>75</b>	<b>250</b>	<b>564</b>	<b>(-4)</b>	<b>58</b>	<b>943</b>

Note : Figures may not add up due to rounding.

**ANNEXURE - III(Contd.)****GROSS FIXED CAPITAL FORMATION OF "LOCALBODIES"  
BY INDUSTRY OF USE AND BY TYPE OF ASSETS****YEAR : 2005-06**

(At Current Prices)

(₹ Crore)

Industry	Buildings	Roads & Bridges	Other Constructions	Transport	Machinery	Total
(1)	(2)	(3)	(4)	(5)	(6)	(7)
Administration	91	395	315	15	41	<b>857</b>
Construction	0	0	0	54	97	<b>151</b>
Water Supply	15	1	140	29	6	<b>191</b>
Other Services	26	24	112	10	98	<b>270</b>
<b>Total</b>	<b>132</b>	<b>420</b>	<b>567</b>	<b>109</b>	<b>242</b>	<b>1,469</b>

Note : Figures may not add up due to rounding.

**ANNEXURE - III(Contd.)****GROSS FIXED CAPITAL FORMATION OF "LOCALBODIES"  
BY INDUSTRY OF USE AND BY TYPE OF ASSETS****YEAR : 2006-07**

(At Current Prices)

(₹ Crore)

Industry	Buildings	Roads & Bridges	Other Constructions	Transport	Machinery	Total
(1)	(2)	(3)	(4)	(5)	(6)	(7)
Administration	80	1,186	392	12	48	<b>1,718</b>
Construction	0	0	0	104	105	<b>209</b>
Water Supply	2	2	154	8	12	<b>178</b>
Other Services	19	13	55	9	227	<b>323</b>
<b>Total</b>	<b>102</b>	<b>1,200</b>	<b>601</b>	<b>134</b>	<b>391</b>	<b>2,428</b>

Note : Figures may not add up due to rounding.

**ANNEXURE - III(Contd.)**

**GROSS FIXED CAPITAL FORMATION OF "LOCALBODIES"  
BY INDUSTRY OF USE AND BY TYPE OF ASSETS**

**YEAR : 2007-08**

(At Current Prices)

(₹ Crore)

<b>Industry</b>	<b>Buildings</b>	<b>Roads &amp; Bridges</b>	<b>Other Constructions</b>	<b>Transport</b>	<b>Machinery</b>	<b>Total</b>
(1)	(2)	(3)	(4)	(5)	(6)	(7)
Administration	94	1349	471	50	111	<b>2,075</b>
Construction	0	0	0	85	86	<b>170</b>
Water Supply	2	2	158	9	12	<b>184</b>
Other Services	20	12	53	9	235	<b>328</b>
<b>Total</b>	<b>116</b>	<b>1363</b>	<b>682</b>	<b>152</b>	<b>444</b>	<b>2,757</b>

Note : Figures may not add up due to rounding.

**ANNEXURE - III(Contd.)**

**GROSS FIXED CAPITAL FORMATION OF "LOCALBODIES"  
BY INDUSTRY OF USE AND BY TYPE OF ASSETS**

**YEAR : 2008-09**

(At Current Prices)

(₹ Crore)

<b>Industry</b>	<b>Buildings</b>	<b>Roads &amp; Bridges</b>	<b>Other Constructions</b>	<b>Transport</b>	<b>Machinery</b>	<b>Total</b>
(1)	(2)	(3)	(4)	(5)	(6)	(7)
Administration	107	1,533	536	60	128	<b>2,364</b>
Construction	0	0	0	93	94	<b>187</b>
Water Supply	3	2	182	10	14	<b>211</b>
Other Services	22	13	56	9	268	<b>369</b>
<b>Total</b>	<b>132</b>	<b>1,548</b>	<b>775</b>	<b>172</b>	<b>504</b>	<b>3,131</b>

Note : Figures may not add up due to rounding.

**ANNEXURE - III(Contd.)**

**GROSS FIXED CAPITAL FORMATION OF "LOCALBODIES"  
BY INDUSTRY OF USE AND BY TYPE OF ASSETS**

**YEAR : 2009-10**

(At Current Prices)

(₹ Crore)

<b>Industry</b>	<b>Buildings</b>	<b>Roads &amp; Bridges</b>	<b>Other Constructions</b>	<b>Transport</b>	<b>Machinery</b>	<b>Total</b>
(1)	(2)	(3)	(4)	(5)	(6)	(7)
Administration	226	2,542	556	40	127	<b>3,492</b>
Construction	0	0	0	48	53	<b>101</b>
Water Supply	1	1	1,574	7	18	<b>1,601</b>
Other Services	491	7	401	7	145	<b>1,051</b>
<b>Total</b>	<b>718</b>	<b>2,550</b>	<b>2,531</b>	<b>102</b>	<b>344</b>	<b>6,245</b>

Note : Figures may not add up due to rounding.

**ANNEXURE - III**(Contd.)

**GROSS FIXED CAPITAL FORMATION OF "LOCALBODIES"  
BY INDUSTRY OF USE AND BY TYPE OF ASSETS**

YEAR : 2010-11

(At Current Prices)

(₹ Crore)

Industry	Buildings	Roads & Bridges	Other Constructions	Transport	Machinery	Total
(1)	(2)	(3)	(4)	(5)	(6)	(7)
Administration	383	3,452	571	26	127	<b>4,559</b>
Construction	0	0	0	0	8	<b>8</b>
Water Supply	0	0	2,785	3	24	<b>2,812</b>
Other Services	853	0	720	4	17	<b>1,594</b>
<b>Total</b>	<b>1,236</b>	<b>3,452</b>	<b>4,076</b>	<b>33</b>	<b>177</b>	<b>8,973</b>

Note : Figures may not add up due to rounding.

ANNEXURE - IV

**GROSS FIXED CAPITAL FORMATION OF SUPRA - REGIONAL SECTOR**

YEAR 2004-05 TO 2010-11

(At Current Prices)

(₹ Crore)

Sr. No.	Sectors	2004-05	2005-06	2006-07	2007-08	2008-09	2009-10	2010-11
(1)	(2)	(3)	(4)	(5)	(6)	(7)	(8)	(9)
1	<b>Railways</b>	677	1,625	891	2,076	1,858	2,017	1,838
2	<b>Communication</b>	1,128	749	918	888	1,313	2,050	1,326
3	<b>Banking &amp; Insurance</b>	267	698	1,296	1,136	1,154	1,149	1,911
4	<b>Central Govt. Administration</b>	3,175	5,232	5,822	6,539	3,793	4,853	6,125
	<b>TOTAL</b>	<b>5,246</b>	<b>8,304</b>	<b>8,927</b>	<b>10,639</b>	<b>8,117</b>	<b>10,070</b>	<b>11,200</b>

Note : Figures may not add up due to rounding.

## ANNEXURE – V

### Methodology used for estimating Gross Fixed Capital Formation (GFCF) of Private Sector Maharashtra

Sr. No.	Name of Sector	Data Source	Items covered	Methodology for estimation of GFCF 2004-05 base year Maharashtra
1	2	3	4	5
1	Agriculture sector	1) National Sample Survey Organisation, Report No. 504 Household Capital Expenditure 2002-03, Table 8 2) National Accounts Statistics 2013 (Total value of Output agriculture at current price Maharashtra & All India)	1) Improvement/ reclamation of land 2) Orchards and Plantation. 3) Farm houses and other construction 4) Wells & other irrigation resources 5) Agriculture, Machinery & implements 6) Transport Equipments 7) Other expenditure including furniture & fixtures.	Ratio = Maharashtra items covered (1 to 7 as per col.4) / All India items covered (1 to 7 as per col.4) * All India Pvt. Part GFCF of the sector (Bench mark years estimates worked out using NSSO Report 504 Table 8. For further years Total value of Output of Agriculture sector of Maharashtra & All India used for estimation of GFCF.)
2	Live stock	Economic Survey of Maharashtra & National Accounts Statistics	1) Maharashtra GVO of Livestock 2) All India GVO of Livestock	Ratio = Maharashtra GVO of Livestock / All India GVO of Livestock * All India Private Part GFCF of the sector.
3	Forestry and Logging	State Forest Report 2003 & India State of Forest Report 2011 by Forest Survey of India	1) Maharashtra Trees Out side Forest (TOF) (Growth Stock) 2) All India TOF	Ratio = Maharashtra TOF/ All India TOF * All India Pvt. Part GFCF of the sector
4	Fisheries	Annual Report 2012-13, Department of Animal Husbandry, Dairying & Fisheries, Ministry of Agriculture, Govt. Of India	1) Maharashtra State Fish Production 2) All India Fish Production	Ratio = Maharashtra Fish Production / All India Fish Production * All India Pvt. Part GFCF of the Sector.
5	Mining & Quarrying	National Accounts Statistics & Economic Survey of Maharashtra	1) Maharashtra State Value of Output (All Minerals) 2) All India Value of Output (All Minerals)	Ratio = Maharashtra State Value of Output (All Minerals) / All India Value of Output (All Minerals) * All India Private Part GFCF of the Sector
6	Registered Manufacturing	Annual Survey of Industries	1) Maharashtra State GFCF (All ASI ) 2) All India GFCF (All ASI)	Ratio = Maharashtra State GFCF (All ASI )/ All India GFCF (All ASI) * All India Private Part GFCF of the Sector
7	Unregistered Manufacturing	1) NSS Report No. 526, Unorganised Manufacturing Sector in India 2005-06, Page No. A-48	1) Market Value of owned fixed assets per enterprise ( Rs.) of Maharashtra & All India.	1) Market Value of owned assets Rs. Lakh = Market Value of owned assets per enterprise ( Rs. ) * Estimated No. of enterprises / 100000

Sr. No.	Name of Sector	Data Source	Items covered	Methodology for estimation of GFCF 2004-05 base year Maharashtra
1	2	3	4	5
	Unregistered Manufacturing	2) Economic Survey of Maharashtra (GSDP at current prices of unorganised Manufacturing sector)	2) Estimated Number of enterprises of Maharashtra & All India. 3) Receipts / output per enterprises of Maharashtra & All India	2) Total output( Rs.Lakh) = Estimated no. of enterprises of Maharashtra * Receipts/ output per enterprise of Maharashtra / 100000 3) Capital output Ratio = Market value of owned assets( Rs. Lakh) / total output ( Rs. Lakh) * 100 4) Stock of fixed assets at current price = (GSDP in current price Rs. Lakh of Unorganised Manufacturing Sector * Capital Output Ratio) / 100 5) GFCF Private Part = Current year stock of fixed assets - previous year stock of fixed assets.
8	Electricity, Gas & Water Supply			
	1) Electricity	Central Electricity Authority	1) Maharashtra Installed Capacity of Private Power Utilities. 2) All India Installed Capacity of Private Power Utilities.	Ratio = Maharashtra Installed Capacity of Private Power Utilities / All India Installed Capacity of Private Power Utilities * All India Private Part GFCF of the Sector
	2) Gas			
	3) Water Supply	Only Public		Only Public
9	Construction	Economic Survey of Maharashtra & National Accounts Statistics	1) Maharashtra GSDP of Construction 2) All India GDP of Construction	Ratio = Maharashtra GSDP of Construction / All India GDP of Construction * All India Private Part GFCF of the sector.
	<b>Service Sector</b>			
10	1) Trade, Hotels & Restaurants 2) Transport by other means & Storage 3) Other Services	1) NSS Report No. 482, Unorganised Service sector in India, 2001-02. Page A326 2) Economic Survey of Maharashtra (GSDP at current Prices)	1) Ratio of Maharashtra total receipts to fixed assets 2) Estimated Stock	1) Capital Output Ratio = 1 / Ratio of Maharashtra total receipts to fixed assets. 2) Estimated Stock = Service sector GSDP at current Prices * Capital Output Ratio 3) Total Private Part service sector GFCF = Current Year Estimated Stock - Previous year Estimated Stock. 4) Calculate Proportion of different service sectors GFCF and multiplied with total private part service sector GFCF to get GFCF of different sector private part.

<b>Sr. No.</b>	<b>Name of Sector</b>	<b>Data Source</b>	<b>Items covered</b>	<b>Methodology for estimation of GFCF 2004-05 base year Maharashtra</b>
<b>1</b>	<b>2</b>	<b>3</b>	<b>4</b>	<b>5</b>
11	Ownership of Dwelling	NSS Report 504, Household Capital Expenditure 2002-03, Table 7, Page A-129, A131	1) Average value of fixed capital expenditure per household during 2002-03 2) Estimated Households	1) <b>Capital Total</b> = (Average Value(Rs.) of fixed capital expenditure per household during 2002-03 * Estimated Households) /100000 2) Ratio = Capital Total Maharashtra / Capital Total All India
12	1)Banking & Insurance 2) Communication	National Statistics Office		Supra regional data received from NSO